



**City of New Brunswick**  
 Division of Recycling  
 P.O. Box 269  
 New Brunswick, NJ 08903

PRSR STD  
 U.S. Postage  
**PAID**  
 New Brunswick, NJ  
 Permit No. 745

**Important! This is your 2017 Trash & Recycling Schedule.**

**www.cityofnewbrunswick.org**

732-745-5104 – City of New Brunswick, Department of Public Works  
 732-745-5059 – City of New Brunswick, Division of Recycling

**www.mciauth.com**

800-488-6242 – Middlesex County Improvement Authority

**www.co.middlesex.nj.us**

732-745-4170 – Middlesex County Division of Solid Waste Management



**Download the FREE “My Waste” app** on your Apple or Android smartphone. The “My Waste” app provides all trash and recycling information for New Brunswick residents.



Please keep this 2017 schedule for reference throughout the year.  
 Printed on recycled and recyclable paper.

*Si necesitan esta información en Español de la Escala de Reciclar, colección de Basura, Hojas y Ganchos de Árboles; Favor de llamar al 732-745-5059 o comuníquese al www.cityofnewbrunswick.org*

# City of New Brunswick

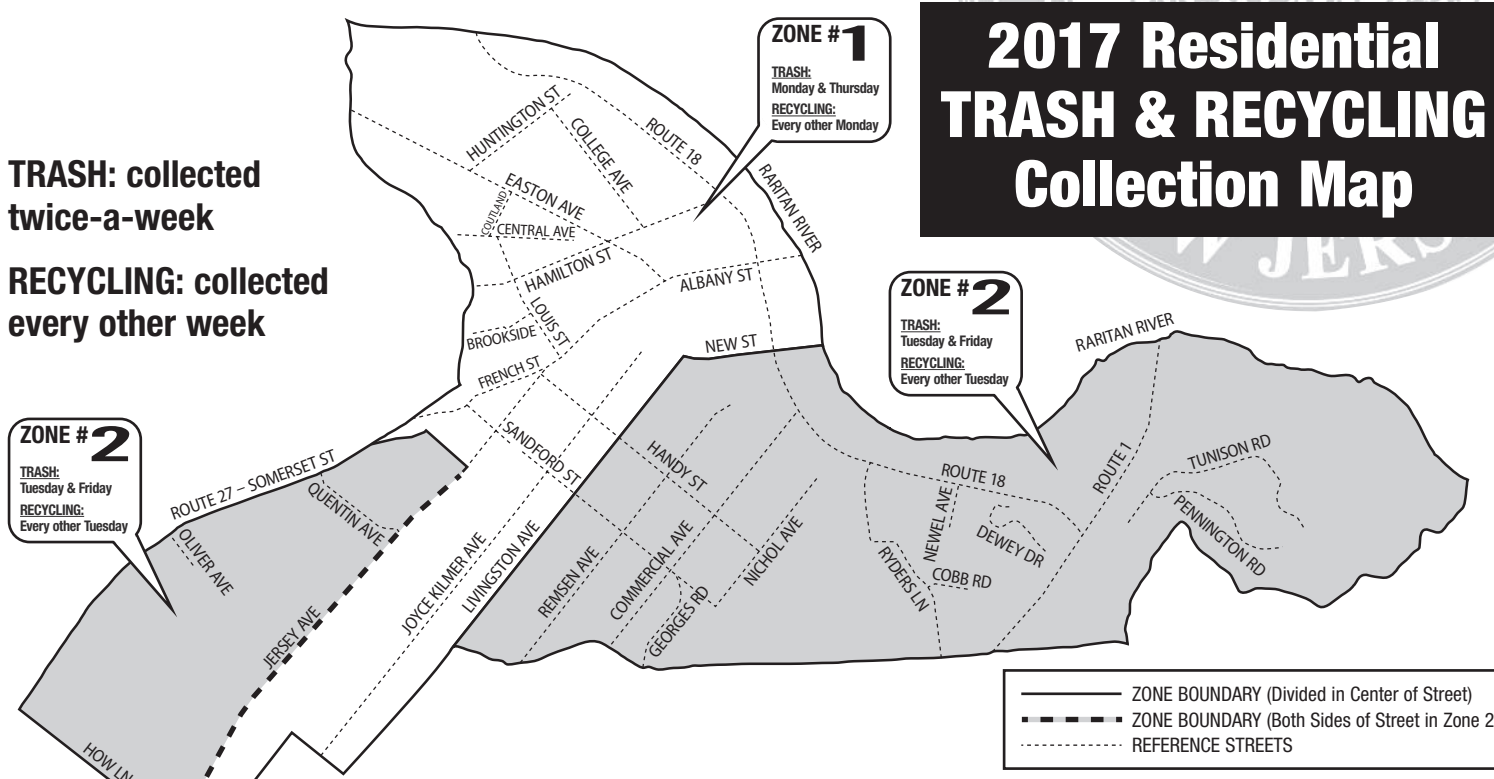
## 2017 Residential Collection Schedule for Trash, Recycling, Leaves & Brush



**TRASH:** collected twice-a-week

**RECYCLING:** collected every other week

### 2017 Residential TRASH & RECYCLING Collection Map



**ZONE #1**  
 MONDAY & THURSDAY TRASH COLLECTION  
 Every other Monday Recycling Collection

**ZONE #2**  
 TUESDAY & FRIDAY TRASH COLLECTION  
 Every other Tuesday Recycling Collection



# 2017 RESIDENTIAL RECYCLING SCHEDULE

Place single stream recyclable material curbside after 5:00 pm on the night before collection, or by 6:00 am on your scheduled collection day.

EVERY OTHER MONDAY Collection Zone #1		EVERY OTHER TUESDAY Collection Zone #2	
January ..... 9..... 23	July ..... 10..... 24	January ..... 10..... 24	July ..... 11..... 25
February ..... 6..... 20	August ..... 7..... 21	February ..... 7..... 21	August ..... 8..... 22
March ..... 6..... 20	September ..... 9*..... 18	March ..... 7..... 21	September ..... 5..... 19
April ..... 3..... 17	October ..... 2..... 16 ..... 30	April ..... 4..... 18	October ..... 3..... 17 ..... 31
May ..... 1..... 15	November ..... 13..... 27	May ..... 2..... 16 ..... 30	November ..... 14..... 28
June ..... 3*..... 12 ..... 26	December ..... 11..... 30*	June ..... 13..... 27	December ..... 12..... 26
<i>*Memorial Day 5/29 changed to 6/3.</i>	<i>*Labor Day 9/4 changed to 9/9.</i>	<i>No Recycling Holidays</i>	<i>No Recycling Holidays</i>
	<i>*Christmas Day changed to 12/30.</i>		

## Corrugated Cardboard

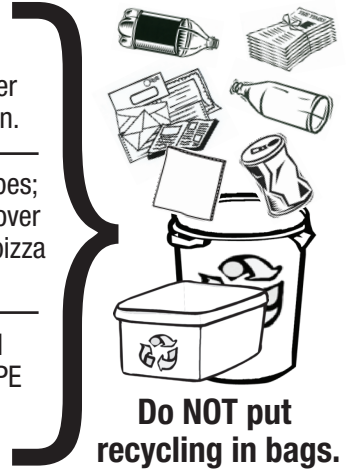
Layered cardboard with center that is shaped into ridges, folds or grooves. Clean pizza boxes, cereal, shoe and gift boxes (waxy or glossy boxes not accepted). Large cardboard must be flattened and tied with string in bundles no more than 4'x4' (larger bundles not accepted). Small flat pieces of cardboard can be placed in a recycling bin.

## Mixed Paper

Newspapers, mail, magazines, office and colored paper; regular and window envelopes; receipts; glossy inserts; telephone and softcover books; hardcover books with hardcover removed; brown paper bags; chipboard; non-metallic wrapping paper, cards, clean pizza boxes, cereal, tissue, shoe and gift boxes. Place in recycling bin.

## Bottles & Cans

Clear, brown and green glass bottles and jars. Aluminum, steel and tin beverage and food containers. Plastic beverage and laundry containers with a #1 PETE or a #2 HDPE recycling symbol. Remove plastic caps and throw in trash. Rinse containers and place in recycling bin.



**Single Stream Recycling allows you to mix bottles, cans, paper and small flat cardboard TOGETHER in the SAME recycling bin. Recycling must be kept separate from trash.**

# 2017 RESIDENTIAL TRASH COLLECTION INFORMATION



## Trash Collection Rules

- Residents must place trash curbside after 5:00 pm the night before the scheduled collection day.
- Up to 3 trash containers or bags will be collected for each residential unit each collection day.
- Trash cans cannot be larger than 32 gallons or heavier than 50 pounds.
- Trash bags must be tied to prevent litter and cannot be heavier than 50 pounds.
- Residents are encouraged to place tied trash bags inside trash cans.
- To request a pick up of extra cans/bags or large items such as furniture, mattresses or rugs, residents must call the Department of Public Works to schedule an appointment. **A maximum combination of 6 containers, bags or bulk items will be collected per unit per special collection once scheduled with the DPW.**
- All mattresses and box springs must be completely wrapped in plastic.
- All items must be placed on the curb in front of your property.
- Residents cannot place out demolition or construction material unless they first obtain permission from the Director of Public Works.
- All policies will be strictly enforced.

**Recycling is mandatory in the State of New Jersey and at no time are you permitted to place recyclables in the trash or place trash in a recycling container. If this occurs the material will not be collected.**



## Trash will NOT be collected on the following holidays:

- New Year's Day**  
Monday, January 2, 2017
- Martin Luther King, Jr. Day**  
Monday, January 16, 2017
- Presidents' Day**  
Monday, February 20, 2017
- Memorial Day**  
Monday, May 29, 2017
- Independence Day**  
Tuesday, July 4, 2017
- Labor Day**  
Monday, September 4, 2017
- Columbus Day**  
Monday, October 9, 2017
- Veteran's Day**  
Friday, November 10, 2017
- Thanksgiving Day**  
Thursday, November 23, 2017
- Christmas**  
Monday, December 25, 2017

*If your trash collection day falls on the above dates, you can place **double** the amount of household trash (6 cans or 6 bags) curbside for the next regularly scheduled collection. No bulk items accepted.*



# RECYCLING INFORMATION



**Recycling is mandatory in the State of New Jersey. You are NOT permitted to place recyclables in the trash.**

## New Brunswick Recycling Drop Off Programs:

### BOTTLES, CANS, NEWSPAPER, MIXED PAPER & CARDBOARD:

Drive onto scale and drop off at Colgate Paper Stock  
(Holiday closures may apply)

7:30 – 11:30 am  
on **Saturdays only**

12 Industrial Drive  
New Brunswick

### PAINT:

Stain, lacquers, thinners, varnish, latex paint,  
oil based paint, aerosol spray paint and driveway sealer  
(Do not bring unknown items or empty cans)

8:00 am – 12:00 noon  
2<sup>ND</sup> Saturday of each month

Dept. of Public Works  
400 Jersey Avenue

### USED MOTOR OIL:

From cars, trucks, motorcycles, boats & all terrain vehicles  
(Up to 30 quarts accepted per year, per resident)

8:00 am – 3:00 pm  
Monday through Friday

Dept. of Public Works  
400 Jersey Avenue

## New Brunswick Curbside Collections:

**APPLIANCES & SCRAP METAL:** Collected curbside by special appointment only. All chlorofluorocarbons (CFC's) will be carefully evacuated from appliances containing refrigerants by the City of New Brunswick. No car parts accepted. Call to schedule an appointment 732-745-5059.

**CHRISTMAS TREES:** Collected curbside for recycling every Wednesday in January. Residents are asked to place bare Christmas trees curbside on Tuesday nights for Wednesday collection in January. Please do not leave your tree wrapped in a bag or with decorations or lights on it.

## Middlesex County Division of Solid Waste Management Drop Off Programs:

### HOUSEHOLD HAZARDOUS WASTE, TIRES, AND PAINT:

All Middlesex County residents can drop off these items at designated facilities on various days and times.

Please call 732-745-4170 or go to [www.middlesexcountynj.gov](http://www.middlesexcountynj.gov) for more information.

\* Beginning January 1, 2011 **televisions, computer monitors and personal computers** including both desktops and laptops are no longer allowed to be disposed of with your garbage. Televisions, computers and monitors must be recycled at a drop off center. Please call 732-745-5059 for a list of drop off sites.

## New Brunswick Recycling Guidelines:

- Items that will NOT be recycled under this program are toys, ovenware, ceramic and polystyrene, pots and pans, bakeware, drinking glasses, mirrors, automobile windshields, light bulbs, window glass, wax coated boxes, flower pots, plastic bags, comforters, pillows, rugs and hangers.
- These non-recyclable items should be placed in household trash or taken to alternate recycling facilities.
- Do not mix recyclables with trash or place trash in recycling containers.
- Do not use bundling dimensions or containers larger than allowed.
- Items incorrectly placed at your curbside will remain uncollected.
- **Do not put bottles, cans, paper or cardboard in bags.**
- **City/County issued recycling bins that are damaged will be replaced for free when residents bring the damaged bins back to DPW.**
- New homeowners can pick up free recycling bins within one year of purchasing the house with a copy of the new deed.

## Call the Department of Public Works (DPW) at 732-745-5104 for:

- Trash collection service.
- Pot hole and road repair.
- Sewer back ups.
- Street sweeper.
- Snow removal from roadways – during storm events, please call 877-4NB-SNOW (877-462-7669).

Office open Monday to Friday, 8am-4pm.

For road or sewer EMERGENCIES after DPW office hours call the New Brunswick Police Department at 732-745-5200.



Do NOT pour cooking oil or grease into your sink. Put used cooking oil/grease into a container, let it solidify, seal it and place inside your household trash container; or go to [middlesexcountynj.gov](http://middlesexcountynj.gov) for cooking oil recycling drop off locations.



**Join in to become part of the solution to help Keep New Brunswick Clean!  
Click on – Stop. Think. Go Green. – on the city website or call 732-745-5245.**

# 2017 RESIDENTIAL BRUSH AND LEAF COLLECTION



## BRUSH COLLECTION PROGRAM

Call 732-745-5059 to make a collection appointment.

Brush includes branches, twigs and woody plants not exceeding 5 inches in diameter.

- Tie branches with string in bundles no longer than 5 feet in length and no heavier than 50 pounds.
- Up to 10 bundles of branches and 3 containers of small brush will be accepted at each collection.
- Place small twigs less than 1 ft. long in open, rigid containers without lids.

**REMINDER:** No brush will be picked up in bags.

Tree stumps, leaves and grass are not included in the brush program.

For maintenance of city trees located between the curb and your sidewalk, please call the **Shade Tree Division at 732-745-5112.**

## 2017 BAGGED LEAF COLLECTION

Place bagged leaves curbside after 5pm on Tuesday nights for collection on designated Wednesdays city-wide.

Biodegradable paper bags are strongly recommended, however leaves placed in clear plastic bags will be accepted.

Leaves in dark plastic bags will not be collected.

Free biodegradable leaf bags are available for residents to pick up on the dates listed below.



## Spring 2017

The Department of Public Works will collect **Bagged Leaves Only** on the 1st & 3rd Wednesday in April & May city-wide.

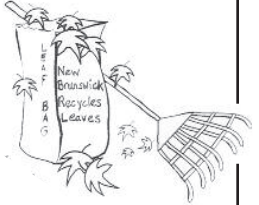
**Wednesday, April 5 & 19 — Wednesday, May 3 & 17**

## Autumn 2017

The Department of Public Works will collect bagged leaves on Wednesdays in Nov. & Dec. city-wide.

**Wednesday, Nov. 1, 8, 15, 22 & 29**

**Wednesday, Dec. 6, 13, 20 & 27**



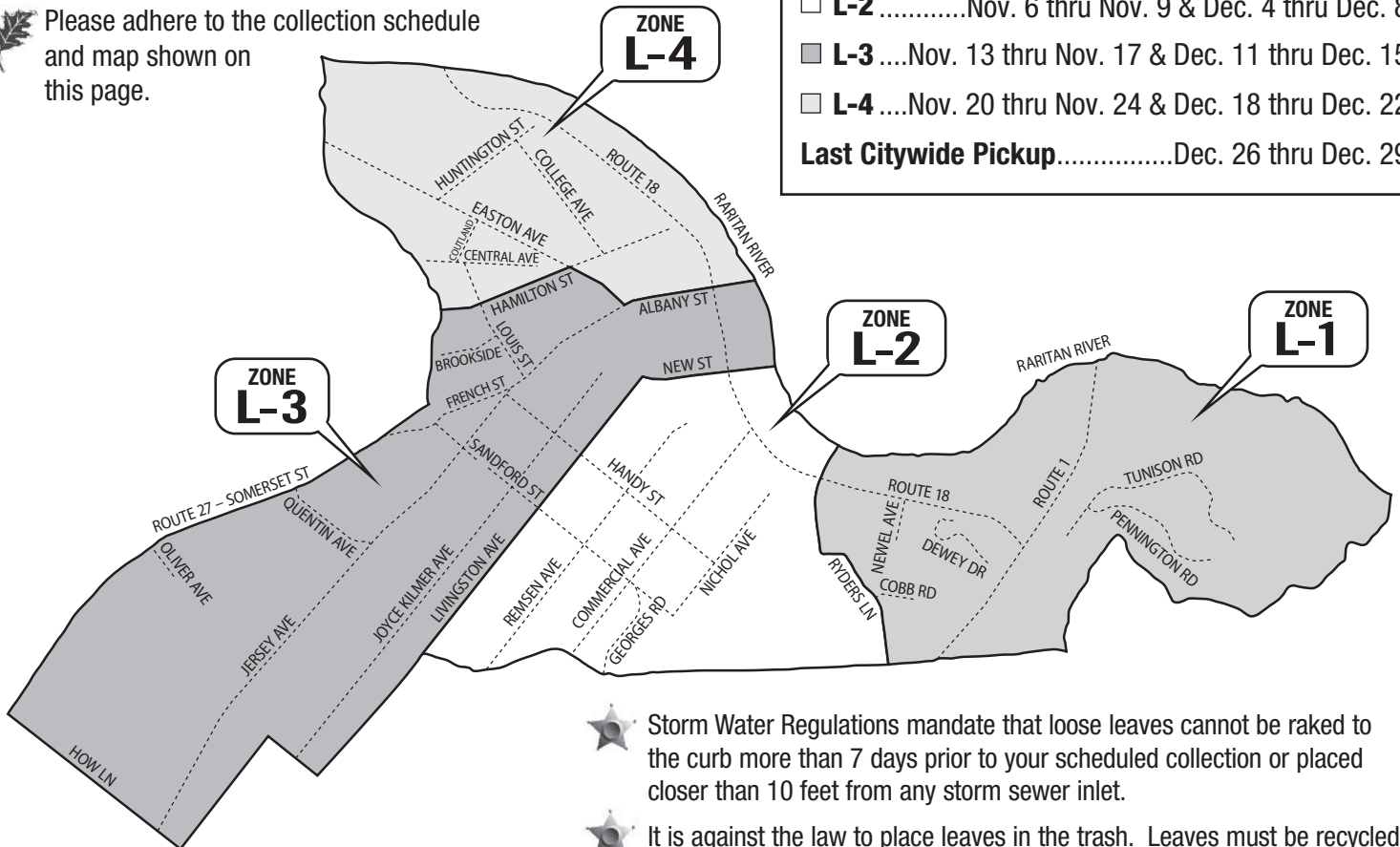
## LOOSE LEAF COLLECTION SCHEDULE & MAP

Loose leaves should be raked to the curb no earlier than 7 days before your scheduled collection.

Please adhere to the collection schedule and map shown on this page.

### LOOSE LEAF ZONES & COLLECTION WEEKS:

- **L-1** .....Oct. 30 thru Nov. 3 & Nov. 27 thru Dec. 1
  - **L-2** .....Nov. 6 thru Nov. 9 & Dec. 4 thru Dec. 8
  - **L-3** ....Nov. 13 thru Nov. 17 & Dec. 11 thru Dec. 15
  - **L-4** ....Nov. 20 thru Nov. 24 & Dec. 18 thru Dec. 22
- Last Citywide Pickup**.....Dec. 26 thru Dec. 29



- ★ Storm Water Regulations mandate that loose leaves cannot be raked to the curb more than 7 days prior to your scheduled collection or placed closer than 10 feet from any storm sewer inlet.
- ★ It is against the law to place leaves in the trash. Leaves must be recycled.
- ★ Under no circumstances will the city pick up leaves that are contaminated with trash, grass, branches, stones, paper, litter or any other debris.

— ZONE BOUNDARY (Divided in Center of Street)  
 - - - - - REFERENCE STREETS

## BIODEGRADABLE LEAF BAGS

**FREE** leaf bags can be picked up at the Department of Public Works at 400 Jersey Avenue, on the dates and times listed to the right.

A maximum of 20 **FREE** bags will be given per property each Spring and Fall when one of the following documents are provided:

- Current drivers license with matching New Brunswick residential address.
- Current deed, tax bill or utility bill for New Brunswick residential address.
- Property owners must provide a letter authorizing individuals without a corresponding New Brunswick ID to pick up bags.
- Up to 50 additional bags may be purchased in bundles of 10 for \$3.50.
- Leaves placed in clear plastic bags will be accepted, however, **biodegradable paper bags are strongly recommended.** No dark bags accepted.

### 2017 Leaf Bag Distribution Dates & Times:

**Wednesdays 11 am–2 pm**

March 29

April 5, 12, 19\*, 26

**Saturdays 8 am–12 noon**

April 8

**Wednesdays 11 am–2 pm**

October 11, 18, 25

November 1, 8, 15, 22, 29

**Saturdays 8 am–12 noon**

October 14 & November 11

\*Doors open early at 9 am for the

**"It's Earth Day at DPW"** events on April 19th.

SPRING  
AUTUMN