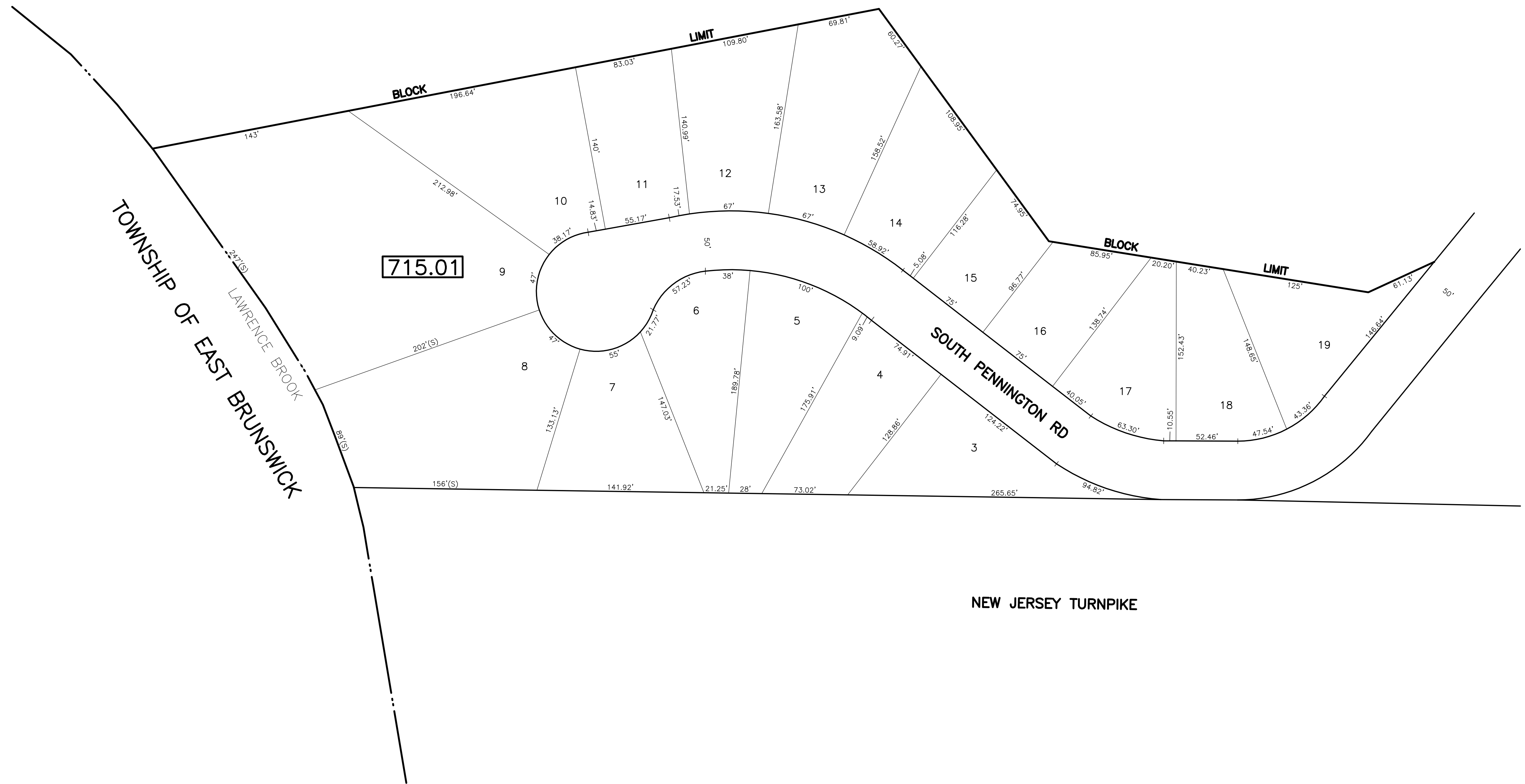
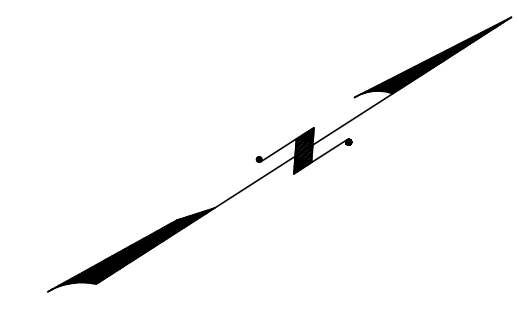


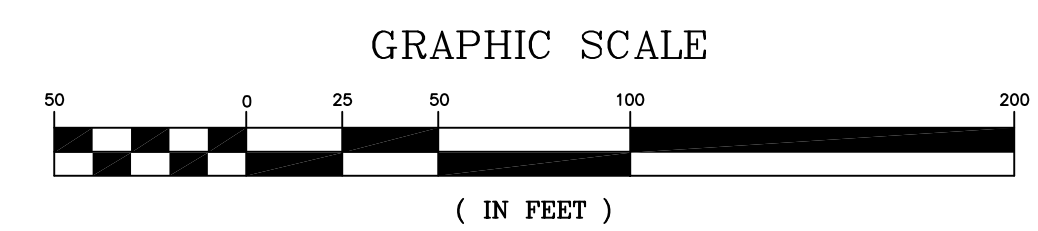
REVISIONS				
DATE	BY	LIC. NO.	BLOCK	LOT

SHEET 79.02

SHEET 83.01



SHEET 83.01



* THIS SHEET HAS BEEN DRAWN USING COMPUTER AIDED DRAFTING/ DESIGN (CAD/D) AND COORDINATE GEOMETRY (COGO).

NEW JERSEY DEPARTMENT OF THE TREASURY
 DIVISION OF TAXATION
 PROPERTY ADMINISTRATION
 APPROVED AS A TAX MAP PURSUANT TO THE AUTHORITY OF
 N.J.A.C. 17:27-15 & 16.62-1
 FOR THE DIRECTOR, DIVISION OF TAXATION
 Thomas S. Reilly (S) C.T.A.
 THOMAS S. REILLY, CHIEF, LOCAL PROPERTY FIELD ASSISTANCE
 Santo C. DiDonato (S) C.T.A.
 SANTO C. DIDONATO, SUPERVISING FIELD REPRESENTATIVE
 DATE: FEB 10, 2009 SERIAL NO.: 934

TAX MAP
CITY OF NEW BRUNSWICK
 MIDDLESEX COUNTY NEW JERSEY
 SCALE: 1" = 50' DATE: JUNE 2007
ARNOLD W. BARNETT
 PROFESSIONAL ENGINEER AND LAND SURVEYOR
 NEW JERSEY LICENSE NO. 14987
 850 SO. WHITE HORSE PIKE
 HAMMONTON, NEW JERSEY 08037
 COA# 24GA27973300

SHEET 79