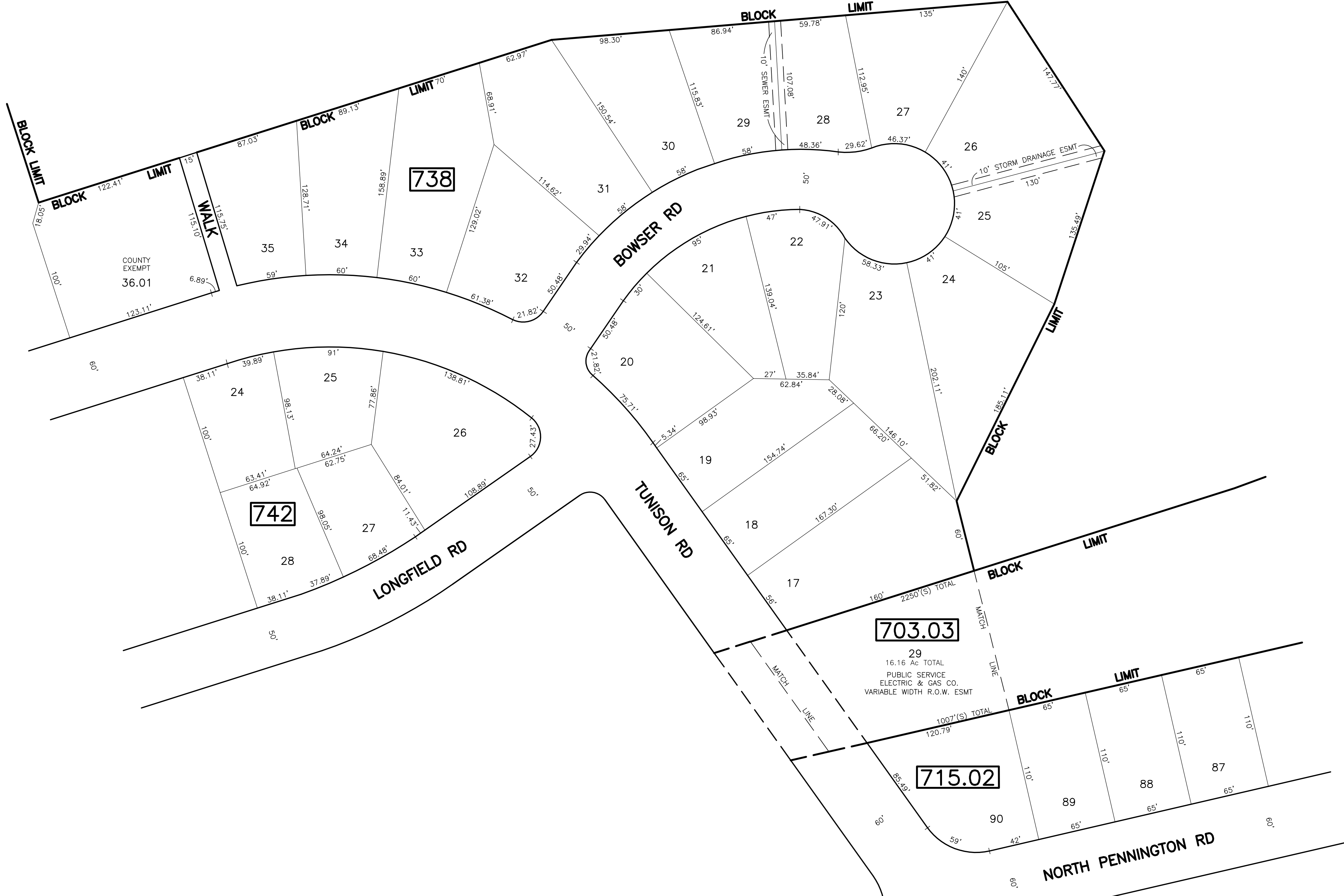


SHEET 79

REVISIONS				
DATE	BY	LIC. NO.	BLOCK	LOT
04/2008	ARNOLD W. BARNETT	14987	703.03	20.05



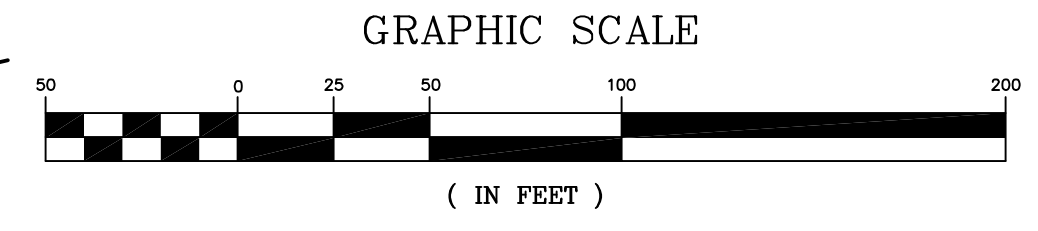
SHEET 82

SHEET 79

SHEET 79.03

SHEET 84

SHEET 79.03



* THIS SHEET HAS BEEN DRAWN USING COMPUTER AIDED DRAFTING/ DESIGN (CAD/D) AND COORDINATE GEOMETRY (COGO).

TAX MAP
CITY OF NEW BRUNSWICK
 MIDDLESEX COUNTY
 SCALE: 1" = 50'

NEW JERSEY
 DATE: JUNE 2007

ARNOLD W. BARNETT
 PROFESSIONAL ENGINEER AND LAND SURVEYOR
 NEW JERSEY LICENSE NO. 14987

850 SO. WHITE HORSE PIKE
 HAMMONTON, NEW JERSEY 08037
 COA# 24GA27973300

NEW JERSEY DEPARTMENT OF THE TREASURY
 DIVISION OF TAXATION
 PROPERTY ADMINISTRATION
 APPROVED AS A SEE MAP PURSUANT TO THE AUTHORITY OF
 N.J.A.C. 17:27-15 & 17:27-16
 FOR THE DIRECTOR, DIVISION OF TAXATION
Thomas S. Reilly, C.E.S.
 THOMAS S. REILLY, CHIEF, LOCAL PROPERTY FIELD ASSISTANCE
Santo C. DiDonato, C.T.A.
 SANTO C. DIDONATO, SUPERVISING FIELD REPRESENTATIVE
 DATE: FEB 10, 2009 SERIAL NO.: 934