

REVISIONS				
DATE	BY	LIC. NO.	BLOCK	LOT

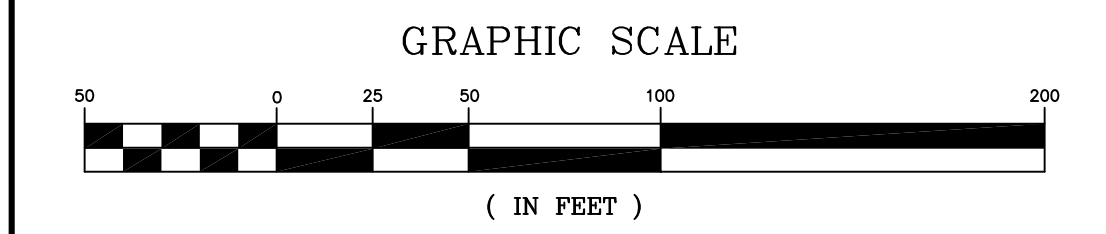
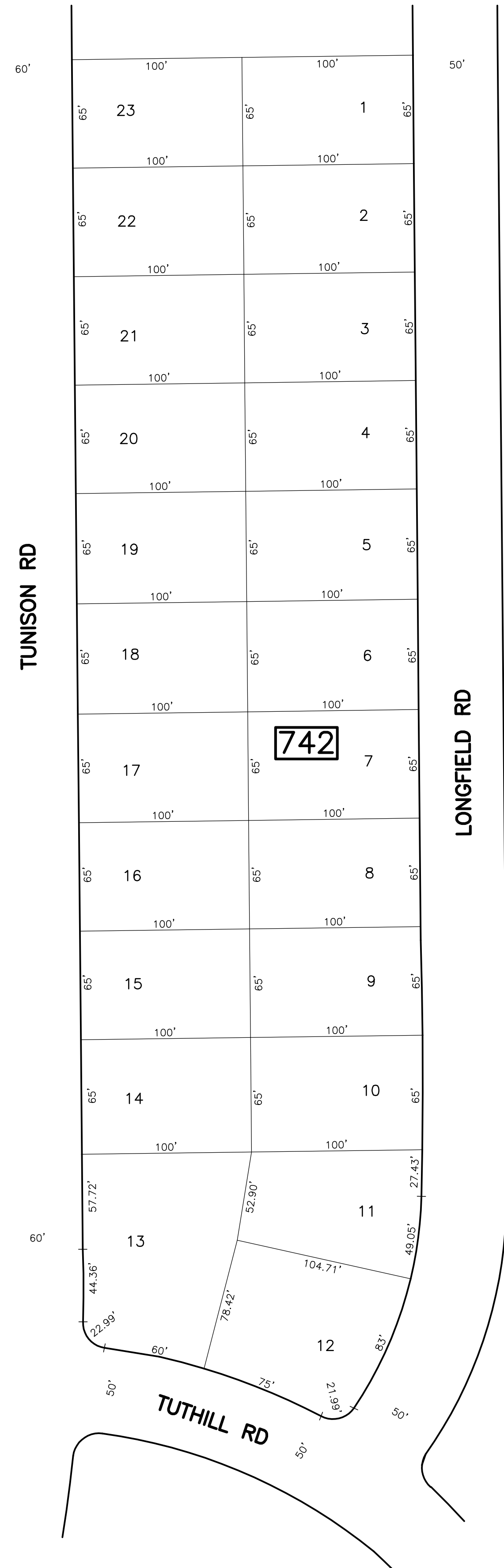
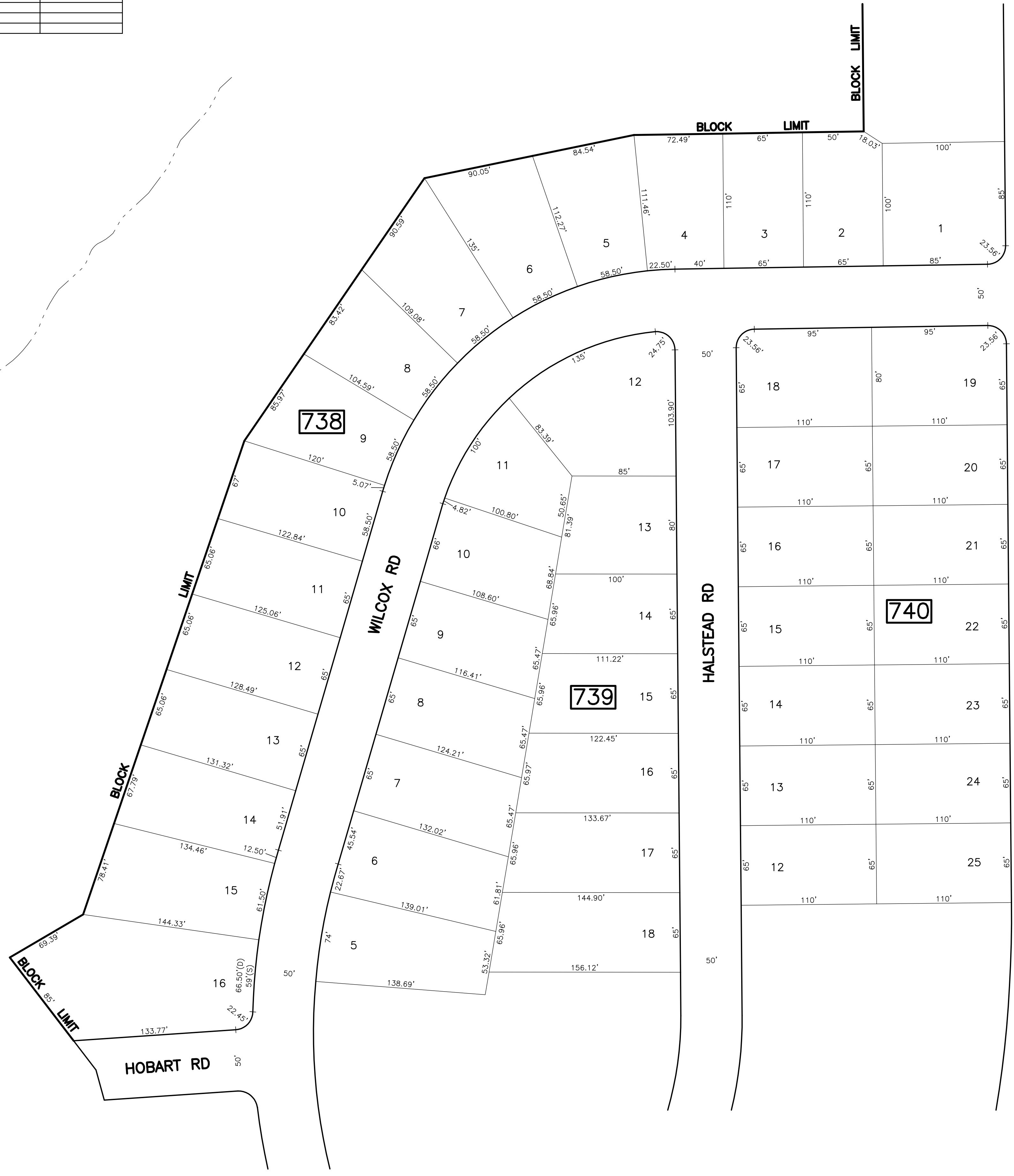
SHEET 79

SHEET 83

SHEET 79

SHEET 72

SHEET 79.03



* THIS SHEET HAS BEEN DRAWN USING COMPUTER AIDED DRAFTING/
DESIGN (CAD/D) AND COORDINATE GEOMETRY (COGO).

SHEET 81

NEW JERSEY DEPARTMENT OF THE TREASURY
DIVISION OF TAXATION
PROPERTY ADMINISTRATION
APPROVED AS A TAX MAP PURSUANT TO THE AUTHORITY OF
PUBLIC LAW 90-128 & 94-141
FOR THE DIRECTOR, DIVISION OF TAXATION
Thomas S. Barnett, P.E. C.T.A.
Santo C. DiDonato, S.A. ASSISTANT
SANTO C. DIDONATO, SUPERVISING FIELD REPRESENTATIVE
DATE: FEB. 10, 2009 SERIAL NO.: 934

TAX MAP
CITY OF NEW BRUNSWICK
MIDDLESEX COUNTY NEW JERSEY
SCALE: 1" = 50' DATE: JUNE 2007
ARNOLD W. BARNETT
PROFESSIONAL ENGINEER AND LAND SURVEYOR
NEW JERSEY LICENSE NO. 14987
850 SO. WHITE HORSE PIKE
HAMMONTON, NEW JERSEY 08037
COA# 24GA27973300