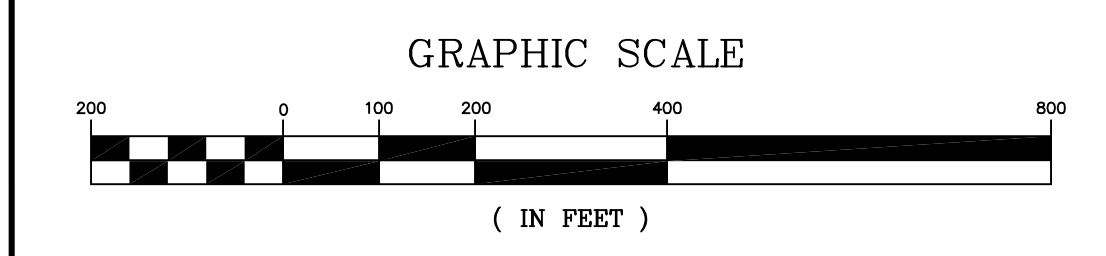
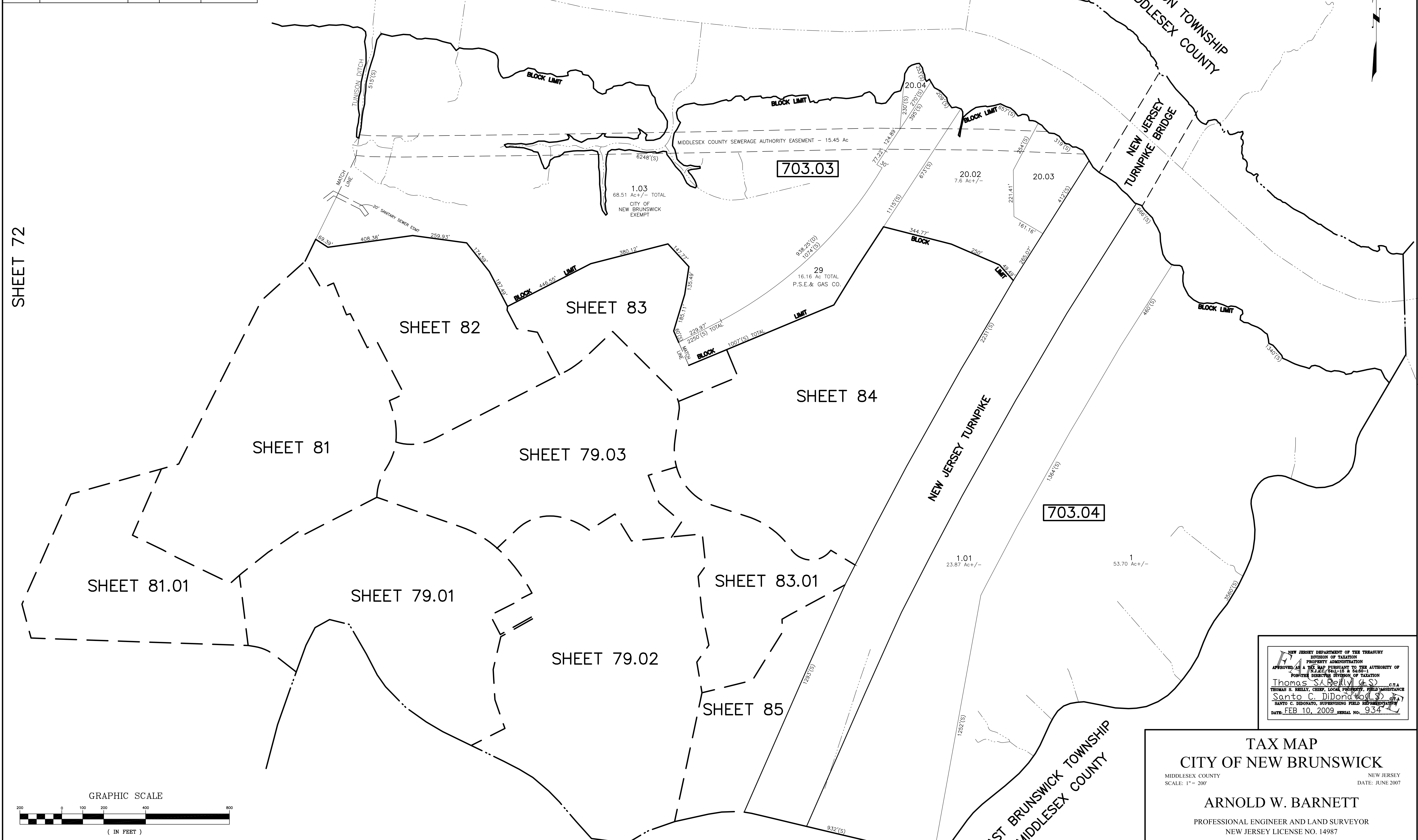


REVISIONS				
DATE	BY	LIC. NO.	BLOCK	LOT
04/2008	ARNOLD W. BARNETT	14987	703.03	20.05
08/11/08	ARNOLD W. BARNETT	14987	New Jersey Turnpike	
08/11/08	ARNOLD W. BARNETT	14987	703.04	1.01
12/29/09	MATTHEW ZIOLKOWSKI	4223800	703.03	1.03

SHEET 72



* THIS SHEET HAS BEEN DRAWN USING COMPUTER AIDED DRAFTING/ DESIGN (CAD/D) AND COORDINATE GEOMETRY (COGO).

NEW JERSEY DEPARTMENT OF THE TREASURY
 DIVISION OF TAXATION
 PROPERTY ADMINISTRATION
 APPROVED AS A TAX MAP PURSUANT TO THE AUTHORITY OF
 PUBLIC LAW 93-502 & 504-1
 FOR THE DIRECTOR, DIVISION OF TAXATION
Thomas S. Reilly, C.T.A.
 CHIEF, LOCAL PROPERTY FIELD ASSISTANCE
Santo C. DiDonato, C.T.A.
 SUPERVISING FIELD REPRESENTATIVE
 DATE: FEB. 10, 2009 SERIAL NO. 934

TAX MAP
CITY OF NEW BRUNSWICK
 MIDDLESEX COUNTY NEW JERSEY
 SCALE: 1" = 200' DATE: JUNE 2007
ARNOLD W. BARNETT
 PROFESSIONAL ENGINEER AND LAND SURVEYOR
 NEW JERSEY LICENSE NO. 14987
 850 SO. WHITE HORSE PIKE
 HAMMONTON, NEW JERSEY 08037
 COA# 24GA27973300