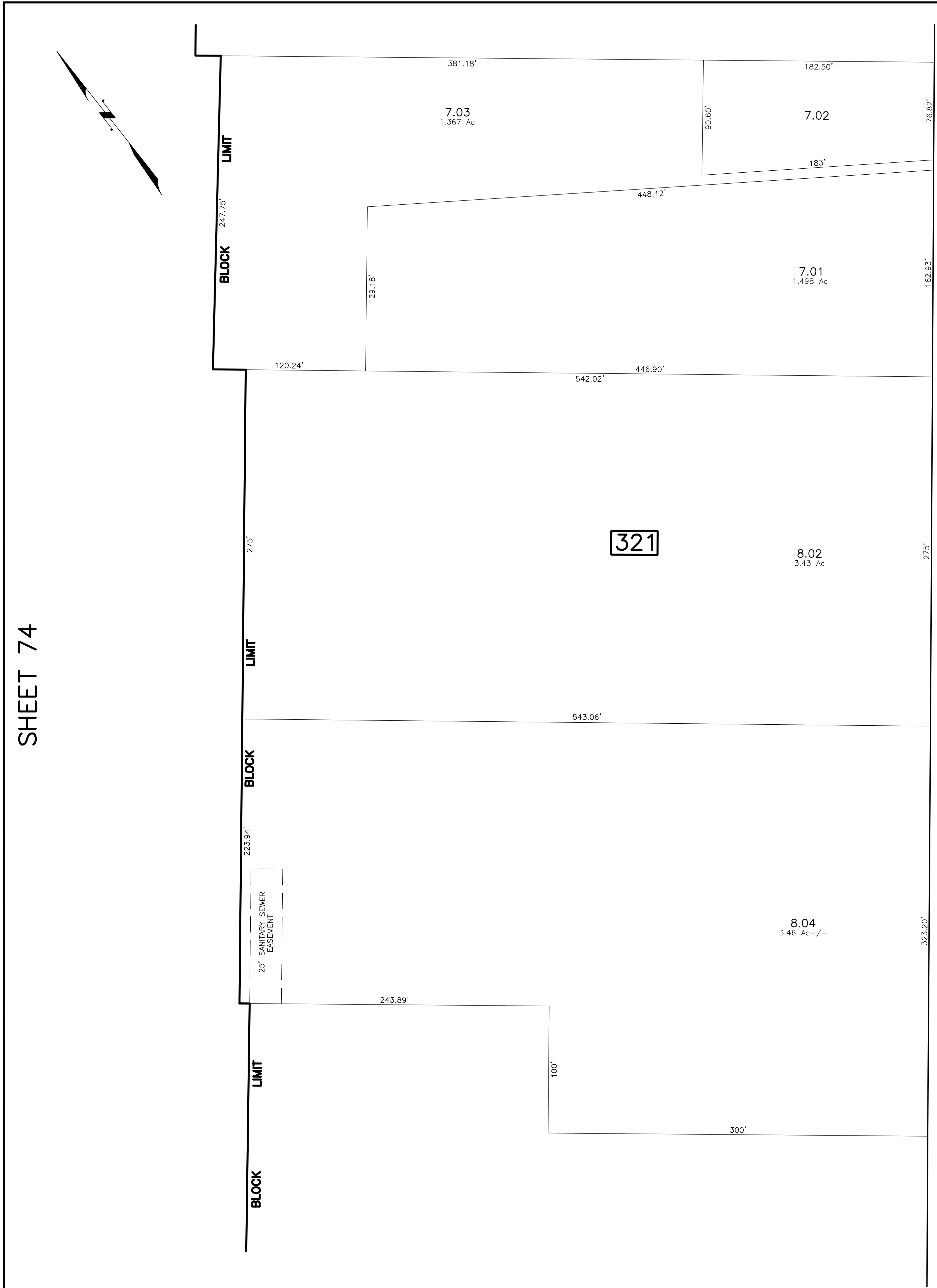


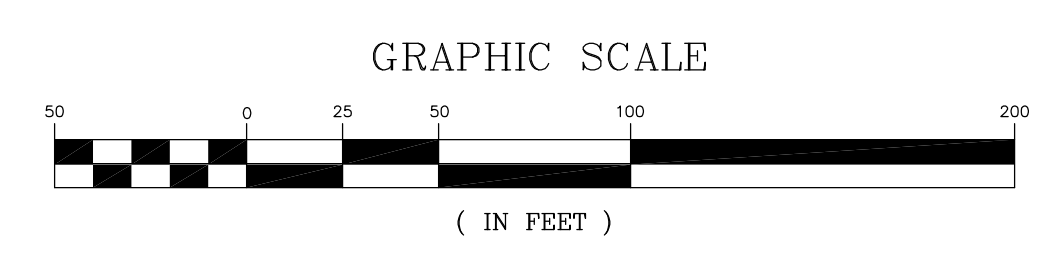
SHEET 74

SHEET 40

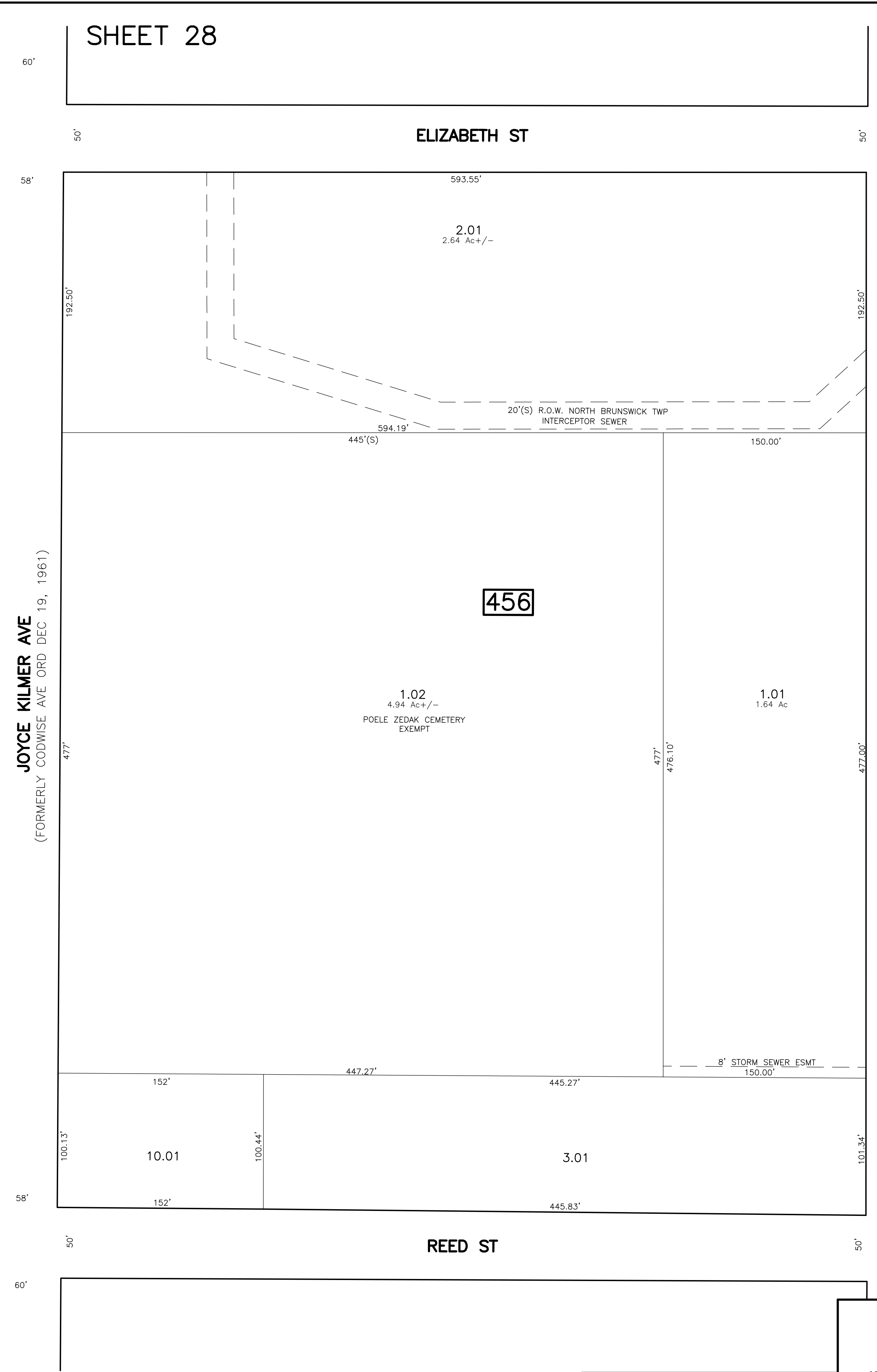


REVISIONS

DATE	BY	LIC. NO.	BLOCK	LOT
08/11/08	ARNOLD W. BARNETT	14987	321	7.04
06/12/09	MATTHEW ZIOLKOWSKI	4223800	321	8.04
05/13/13	RICHARD A. SCHULZ	37607	456	1.01



* THIS SHEET HAS BEEN DRAWN USING COMPUTER AIDED DRAFTING/ DESIGN (CAD/D) AND COORDINATE GEOMETRY (COGO).



SHEET 76

NEW JERSEY DEPARTMENT OF THE TREASURY
DIVISION OF TAXATION
PROPERTY ADMINISTRATION

APPROVED AS A PER MIT PURSUANT TO THE AUTHORITY OF
N.J.A.C. 17:27 - 18 & 16.62-1
FOR THE DIRECTOR DIVISION OF TAXATION

Thomas S. Reilly, C.E.T.A.
THOMAS S. REILLY, CHIEF, LOCAL PROPERTY FIELD ASSISTANCE
Santo C. DiDonato, SUPERVISING FIELD REPRESENTATIVE

DATE: FEB 10, 2009 SERIAL NO. 934

TAX MAP
CITY OF NEW BRUNSWICK

MIDDLESEX COUNTY NEW JERSEY
SCALE: 1" = 50' DATE: JUNE 2007

ARNOLD W. BARNETT
PROFESSIONAL ENGINEER AND LAND SURVEYOR
NEW JERSEY LICENSE NO. 14987

850 SO. WHITE HORSE PIKE
HAMMONTON, NEW JERSEY 08037
COA# 24GA27973300