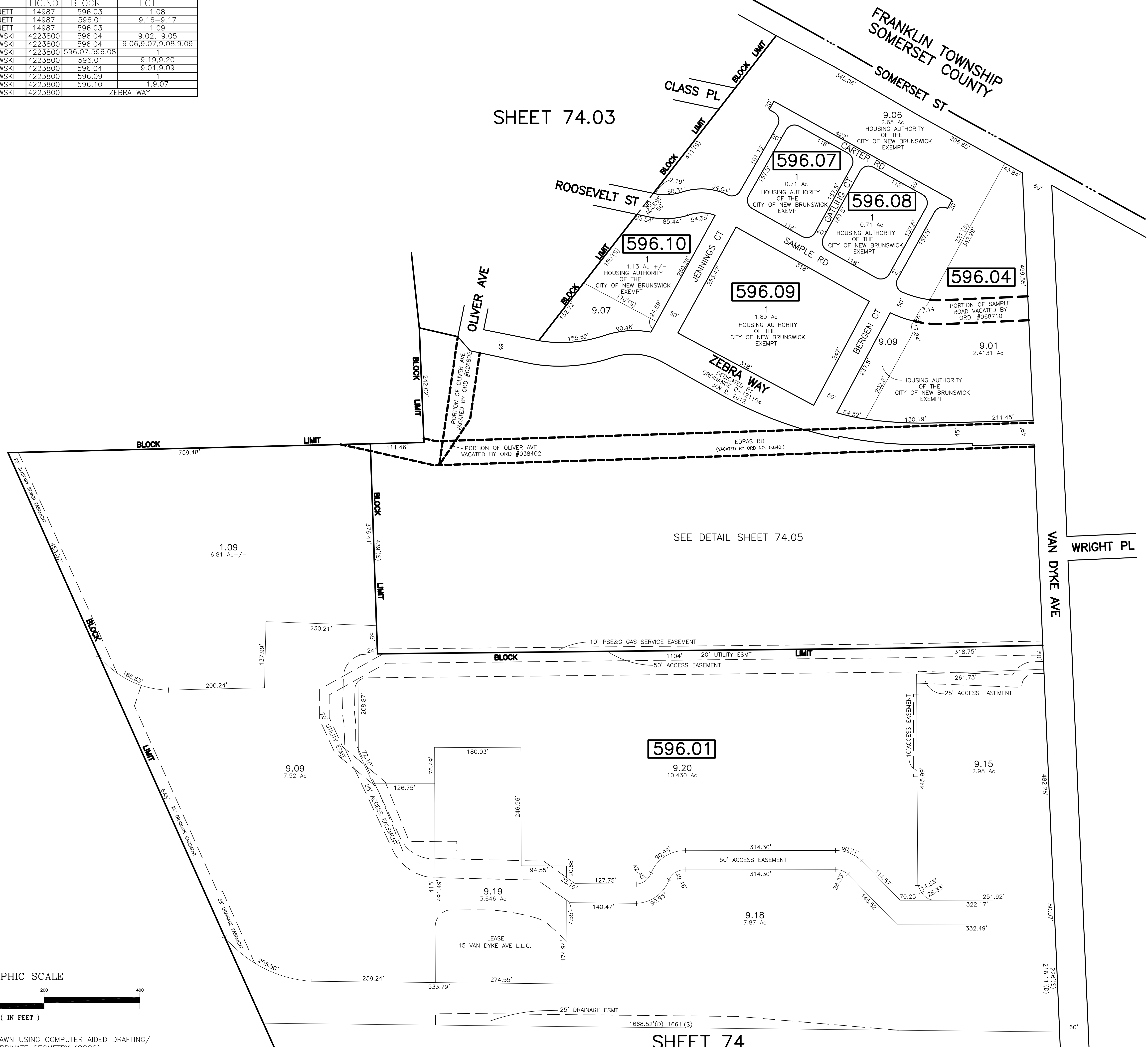


REVISIONS				
DATE	BY	LIC NO	BLOCK	LOT
04/2008	ARNOLD W. BARNETT	14987	596.03	1.08
08/11/08	ARNOLD W. BARNETT	14987	596.01	9.16-9.17
12/30/09	ARNOLD W. BARNETT	14987	596.03	1.09
12/14/10	MATTHEW ZIOLKOWSKI	4223800	596.04	9.02, 9.05
12/14/10	MATTHEW ZIOLKOWSKI	4223800	596.04	9.06, 9.07, 9.08, 9.09
12/14/10	MATTHEW ZIOLKOWSKI	4223800	596.07, 596.08	1
10/17/11	MATTHEW ZIOLKOWSKI	4223800	596.01	9.19, 9.20
12/23/11	MATTHEW ZIOLKOWSKI	4223800	596.04	9.01, 9.09
12/23/11	MATTHEW ZIOLKOWSKI	4223800	596.09	1
12/23/11	MATTHEW ZIOLKOWSKI	4223800	596.10	1, 9.07
12/23/11	MATTHEW ZIOLKOWSKI	4223800		ZEBRA WAY

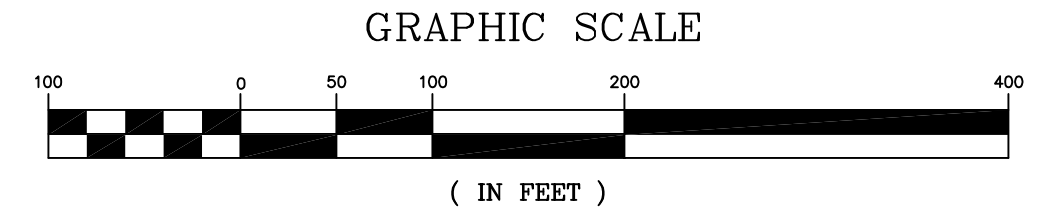
SHEET 74.03

NOTE:
BERGEN COURT, CARTER ROAD, GATLING COURT, JENNINGS COURT, AND SAMPLE ROAD DEDICATED BY RESOLUTION A-10176, 117-118, AUGUST 5, 1958



SHEET 80

SHEET 74



* THIS SHEET HAS BEEN DRAWN USING COMPUTER AIDED DRAFTING/ DESIGN (CAD/D) AND COORDINATE GEOMETRY (COGO).

SHEET 74

NEW JERSEY DEPARTMENT OF THE TREASURY
DIVISION OF TAXATION
PROPERTY ADMINISTRATION
APPROVED AS A TAX MAP PURSUANT TO THE AUTHORITY OF PUBLIC LAW 93-576
FOR THE DIRECTOR DIVISION OF TAXATION
Thomas S. Beilly & S. C.T.A.
THOMAS S. BEILLY, CHIEF, LOCAL PROPERTY FIELD ASSISTANCE
Santo C. DiDonato C.T.A.
SANTO C. DIDONATO, SUPERVISING FIELD REPRESENTATIVE
DATE: FEB. 10, 2009 SERIAL NO. 934

TAX MAP
CITY OF NEW BRUNSWICK
MIDDLESEX COUNTY NEW JERSEY
SCALE: 1" = 100' DATE: JUNE 2007
ARNOLD W. BARNETT
PROFESSIONAL ENGINEER AND LAND SURVEYOR
NEW JERSEY LICENSE NO. 14987
850 SO. WHITE HORSE PIKE
HAMMONTON, NEW JERSEY 08037
COA# 24GA27973300