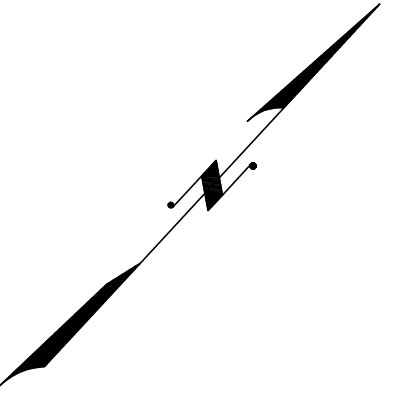
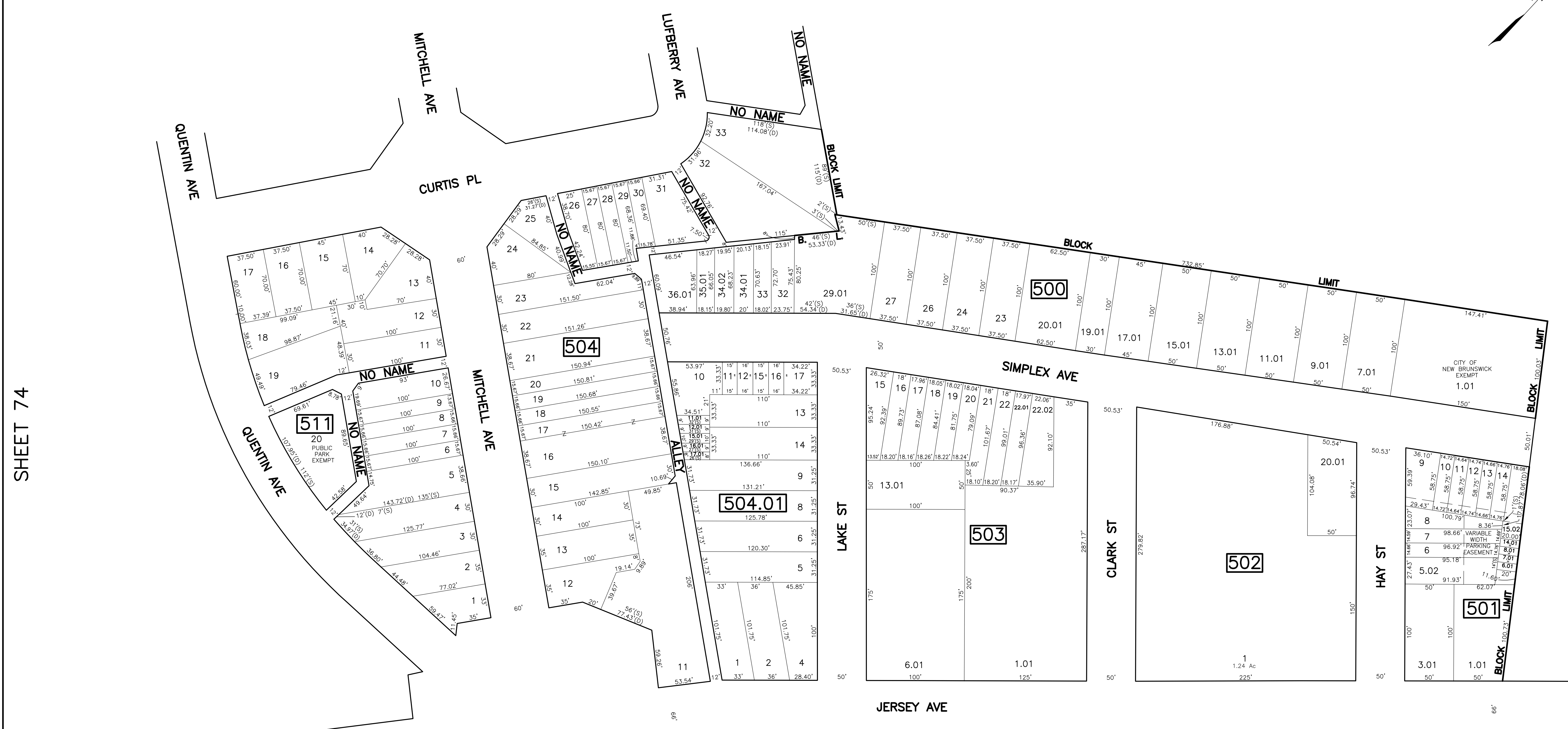


SHEET 74.02

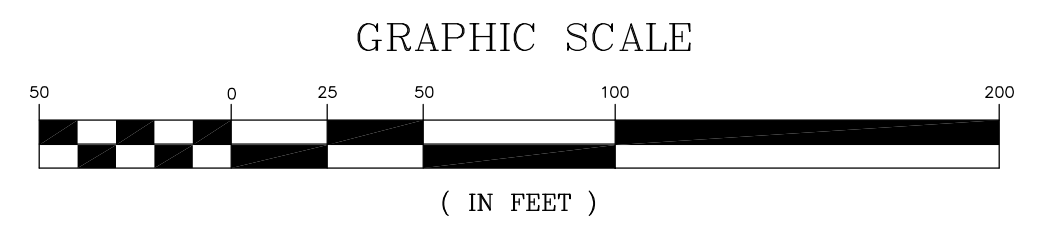


REVISIONS				
DATE	BY	LIC NO	BLOCK	LOT
04/2008	ARNOLD W. BARNETT	14987	503	6.01, 8.01
04/2008	ARNOLD W. BARNETT	14987	500	32, 33
12/16/11	MATTHEW ZIOLKOWSKI	4223800	500	24, 26
05/06/13	RICHARD A. SCHULZ	37607	501	5.02, 6-14
05/06/13	RICHARD A. SCHULZ	37607	501	15.02
05/07/13	RICHARD A. SCHULZ	37607	511	16, 17



SHEET 74

SHEET 74



* THIS SHEET HAS BEEN DRAWN USING COMPUTER AIDED DRAFTING/ DESIGN (CAD/D) AND COORDINATE GEOMETRY (COGO).

TAX MAP
CITY OF NEW BRUNSWICK
 MIDDLESEX COUNTY
 SCALE: 1" = 50'

ARNOLD W. BARNETT
 PROFESSIONAL ENGINEER AND LAND SURVEYOR
 NEW JERSEY LICENSE NO. 14987

850 SO. WHITE HORSE PIKE
 HAMMONTON, NEW JERSEY 08037
 COA# 24GA2973300

NEW JERSEY DEPARTMENT OF THE TREASURY
 DIVISION OF TAXATION
 PROPERTY ADMINISTRATION
 APPROVED AS A FEE MAP PURSUANT TO THE AUTHORITY OF
 N.J.A.C. 17:27-15 & 16.02-1
 FOR THE DIRECTOR, DIVISION OF TAXATION
Thomas S. Reilly, C.S.
 THOMAS S. REILLY, CHIEF, LOCAL PROPERTY FIELD ASSISTANCE
Santo C. DiDonato, C.S.
 SANTO C. DIDONATO, SUPERVISING FIELD REPRESENTATIVE
 DATE: FEB 10, 2009 SERIAL NO.: 934

SHEET 74