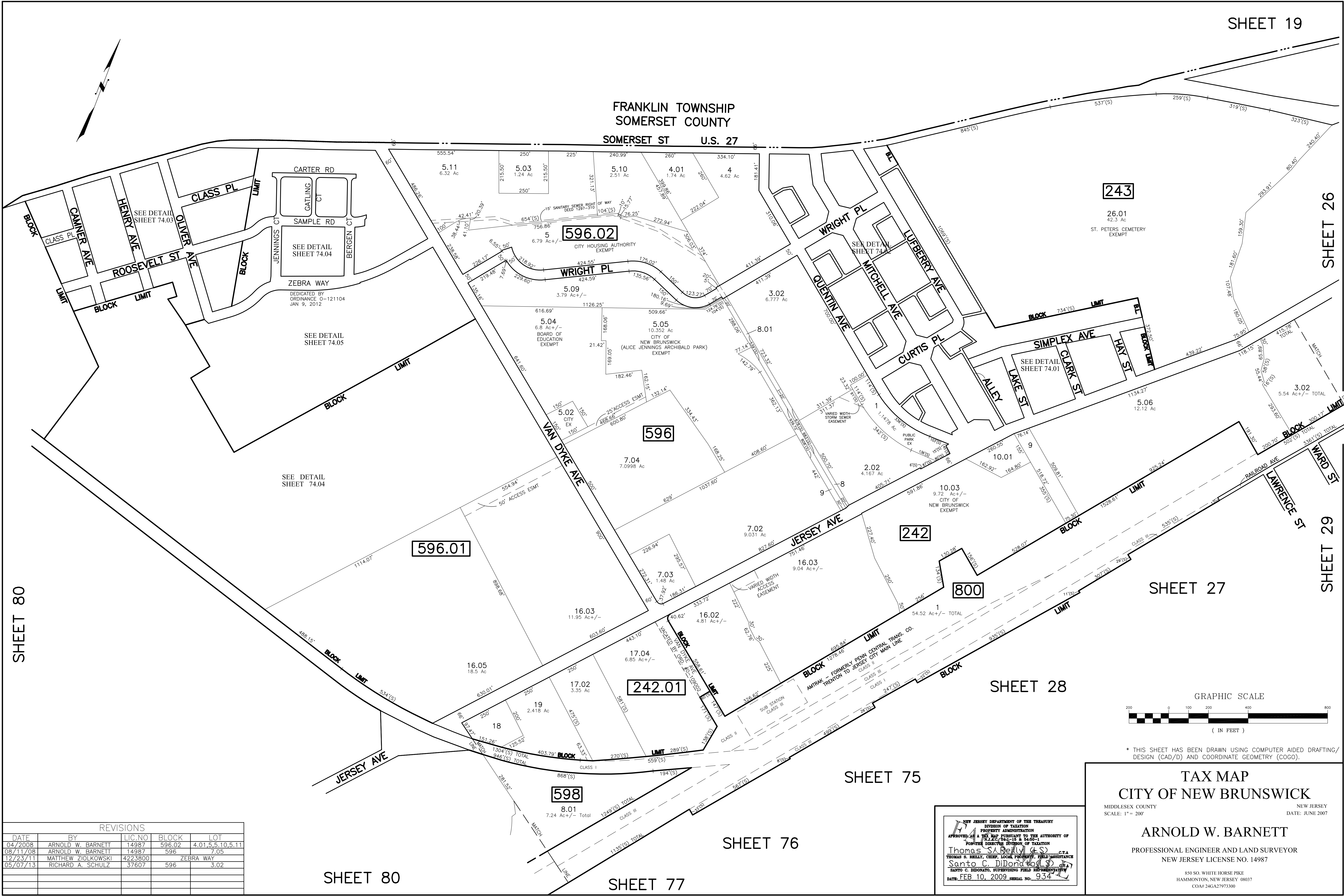


FRANKLIN TOWNSHIP
SOMERSET COUNTY
SOMERSET ST U.S. 27



243

596.02

596

596.01

242

800

242.01

598

26.01
42.3 Ac
ST. PETERS CEMETERY
EXEMPT

5
6.79 Ac+/-
CITY HOUSING AUTHORITY
EXEMPT

5.04
6.8 Ac+/-
BOARD OF EDUCATION
EXEMPT

5.05
10.352 Ac
CITY OF NEW BRUNSWICK
(ALICE JENNINGS ARCHIBALD PARK)
EXEMPT

5.02
CITY EX

7.04
7.0998 Ac

2.02
4.167 Ac
CITY OF NEW BRUNSWICK
EXEMPT

10.03
9.72 Ac+/-
CITY OF NEW BRUNSWICK
EXEMPT

16.03
11.95 Ac+/-

16.02
4.81 Ac+/-

17.04
6.85 Ac+/-

17.02
3.35 Ac

19
2.418 Ac

8.01
7.24 Ac+/- Total

SEE DETAIL SHEET 74.03

SEE DETAIL SHEET 74.04

SEE DETAIL SHEET 74.05

SEE DETAIL SHEET 74.04

SEE DETAIL SHEET 74.03

SEE DETAIL SHEET 74.01

SHEET 27

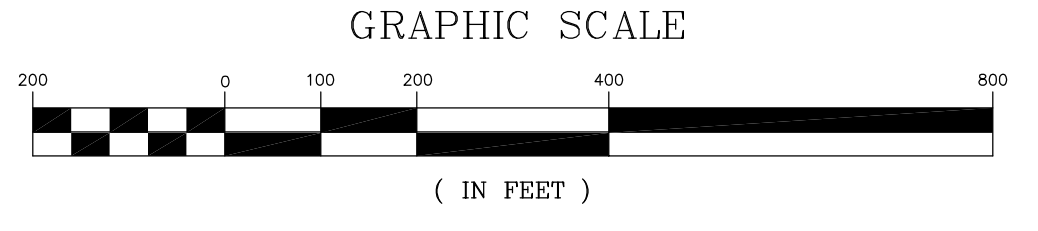
SHEET 28

SHEET 75

SHEET 76

SHEET 80

SHEET 77



* THIS SHEET HAS BEEN DRAWN USING COMPUTER AIDED DRAFTING/ DESIGN (CAD/D) AND COORDINATE GEOMETRY (COGO).

TAX MAP
CITY OF NEW BRUNSWICK

MIDDLESEX COUNTY NEW JERSEY
SCALE: 1" = 200' DATE: JUNE 2007

ARNOLD W. BARNETT

PROFESSIONAL ENGINEER AND LAND SURVEYOR
NEW JERSEY LICENSE NO. 14987

850 SO. WHITE HORSE PIKE
HAMMONTON, NEW JERSEY 08037
CO# 24GA27973300

NEW JERSEY DEPARTMENT OF THE TREASURY
DIVISION OF TAXATION
PROPERTY ADMINISTRATION
APPROVED AS A FEE MAP PURSUANT TO THE AUTHORITY OF
N.J.A.C. 17:27-15 & 16-2-1
FOR THE DIRECTOR, DIVISION OF TAXATION
Thomas S. Reilly, C.S.
THOMAS S. REILLY, CHIEF, LOCAL PROPERTY FIELD ASSISTANCE
Santo C. DiDonato, C.S.
SANTO C. DIDONATO, SUPERVISING FIELD REPRESENTATIVE
DATE: FEB. 10, 2009 SERIAL NO.: 934

REVISIONS					
DATE	BY	LIC. NO.	BLOCK	LOT	
04/2008	ARNOLD W. BARNETT	14987	596.02	4.01, 5.5, 10.5, 11	
08/11/08	ARNOLD W. BARNETT	14987	596	7.05	
12/23/11	MATTHEW ZIOLKOWSKI	4223800	ZEBRA WAY		
05/07/13	RICHARD A. SCHULZ	37607	596	3.02	