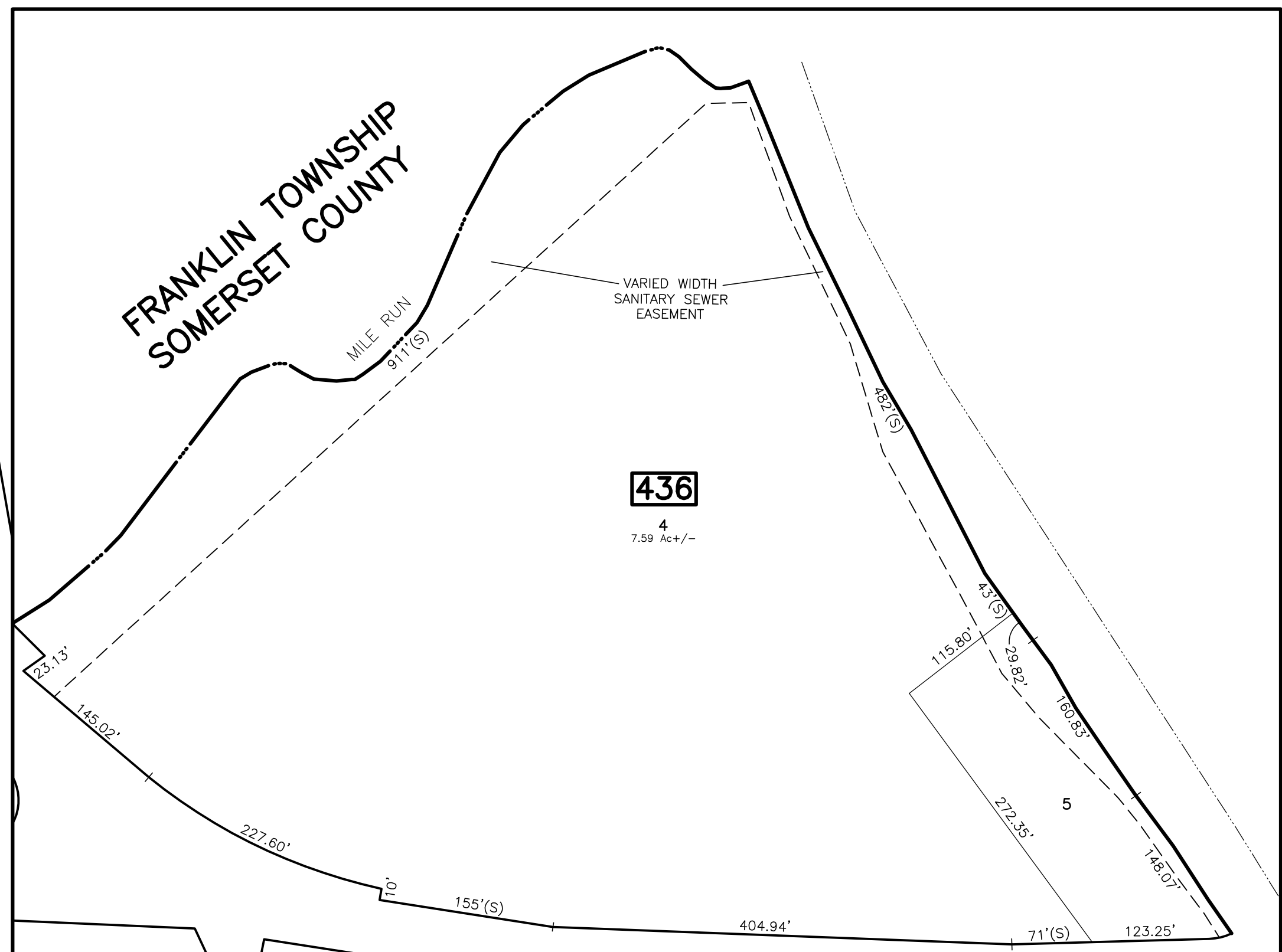
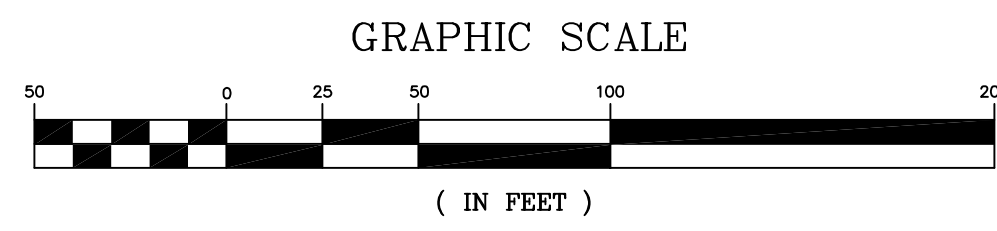


REVISIONS				
DATE	BY	LIC. NO.	BLOCK	LOT
05/10/13	RICHARD A. SCHULZ	37607	437	2.02



DETAIL "A"  
TO SHOW MUNICIPAL LIMIT  
SCALE: 1" = 100'



\* THIS SHEET HAS BEEN DRAWN USING COMPUTER AIDED DRAFTING/ DESIGN (CAD/D) AND COORDINATE GEOMETRY (COGO).

NEW JERSEY DEPARTMENT OF THE TREASURY  
DIVISION OF TAXATION  
PROPERTY ADMINISTRATION  
APPROVED AS A PER MIA PURSUANT TO THE AUTHORITY OF  
N.J.A.C. 17:27-15 & 16-2-1  
FOR THE DIRECTOR DIVISION OF TAXATION  
**Thomas S. Reilly, C.S.**  
THOMAS S. REILLY, CHIEF, LOCAL PROPERTY TAX FIELD ASSISTANCE  
**Santo C. DiDonato, C.S.**  
SANTO C. DIDONATO, SUPERVISING FIELD REPRESENTATIVE  
DATE: FEB 10, 2009 SERIAL NO.: 934

**TAX MAP**  
**CITY OF NEW BRUNSWICK**  
MIDDLESEX COUNTY  
SCALE: 1" = 50'  
NEW JERSEY  
DATE: JUNE 2007  
**ARNOLD W. BARNETT**  
PROFESSIONAL ENGINEER AND LAND SURVEYOR  
NEW JERSEY LICENSE NO. 14987  
850 SO. WHITE HORSE PIKE  
HAMMONTON, NEW JERSEY 08037  
COA# 24GA27973300

SHEET 73.02

SHEET 73