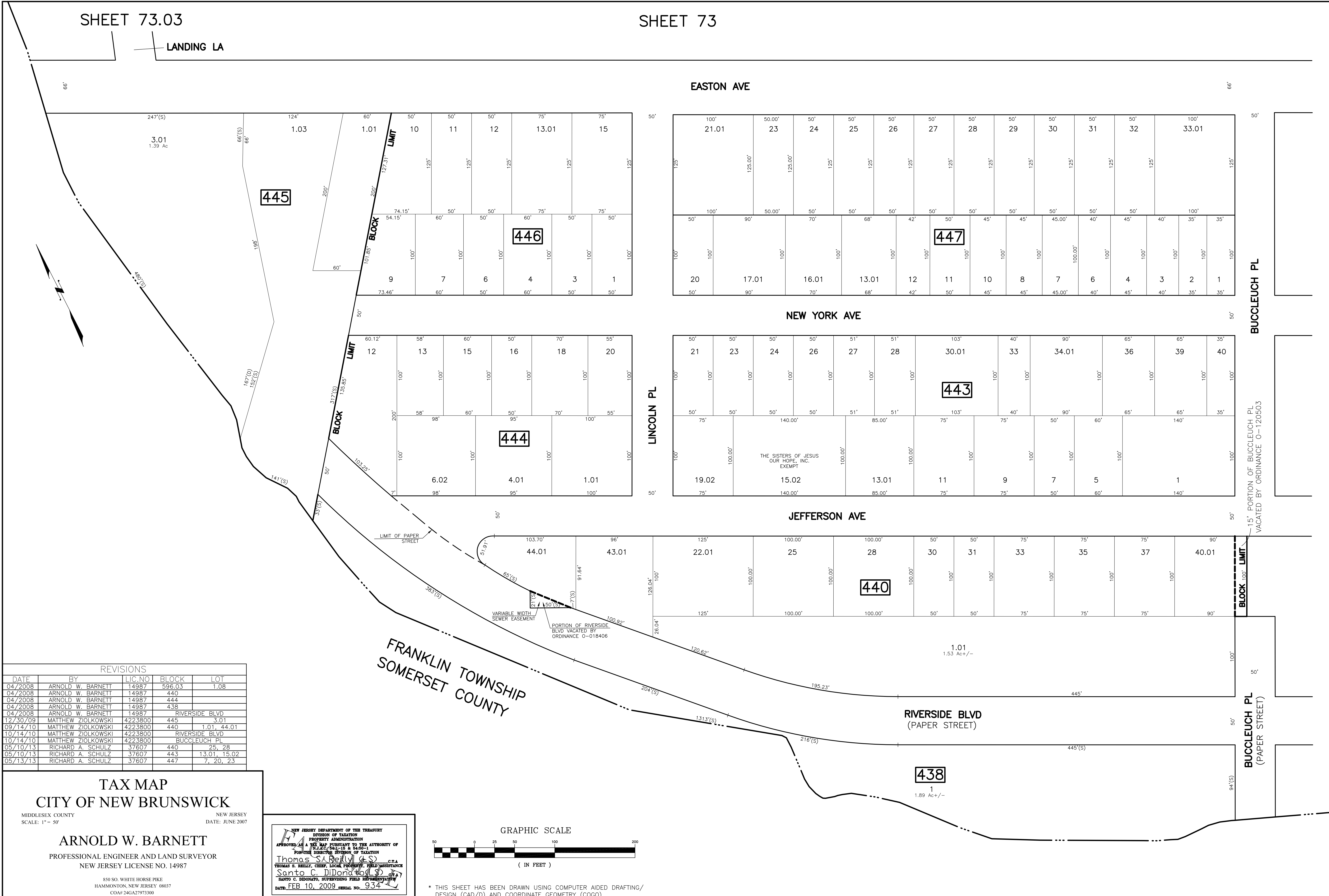


LANDING LA



SHEET 73.01

REVISIONS

DATE	BY	LIC. NO.	BLOCK	LOT
04/2008	ARNOLD W. BARNETT	14987	598.03	1.08
04/2008	ARNOLD W. BARNETT	14987	440	
04/2008	ARNOLD W. BARNETT	14987	444	
04/2008	ARNOLD W. BARNETT	14987	438	
04/2008	ARNOLD W. BARNETT	14987	RIVERSIDE BLVD	
12/30/09	MATTHEW ZIOLKOWSKI	4223800	445	3.01
09/14/10	MATTHEW ZIOLKOWSKI	4223800	440	1.01, 44.01
10/14/10	MATTHEW ZIOLKOWSKI	4223800	RIVERSIDE BLVD	
10/14/10	MATTHEW ZIOLKOWSKI	4223800	BUCCLEUCH PL	
05/10/13	RICHARD A. SCHULZ	37607	440	25, 28
05/10/13	RICHARD A. SCHULZ	37607	443	13.01, 15.02
05/13/13	RICHARD A. SCHULZ	37607	447	7, 20, 23

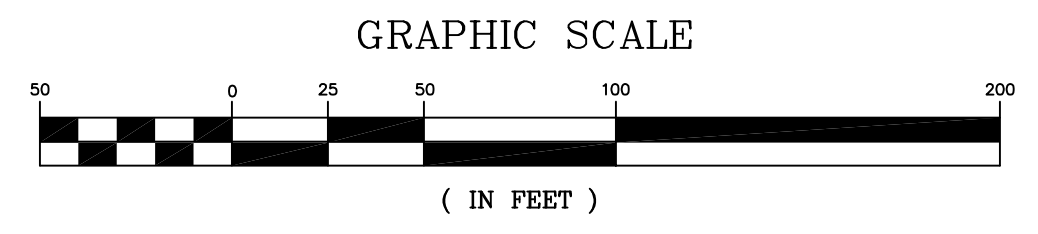
TAX MAP CITY OF NEW BRUNSWICK

MIDDLESEX COUNTY NEW JERSEY SCALE: 1" = 50' DATE: JUNE 2007

ARNOLD W. BARNETT PROFESSIONAL ENGINEER AND LAND SURVEYOR NEW JERSEY LICENSE NO. 14987

850 SO. WHITE HORSE PIKE HAMMONTON, NEW JERSEY 08037 COA# 24GA27973300

NEW JERSEY DEPARTMENT OF THE TREASURY
DIVISION OF TAXATION
PROPERTY ADMINISTRATION
APPROVED AS A MAP PURSUANT TO THE AUTHORITY OF
N.J.A.C. 17:27-10 & 17:27-11
FOR THE DIRECTOR, DIVISION OF TAXATION
Thomas S. Deilly (E.S.) C.T.A.
THOMAS S. DEILLY, CHIEF, LOCAL PROPERTY TAX FIELD ASSISTANCE
Santo C. DiDonato, SUPERVISING FIELD REPRESENTATIVE
DATE: FEB 10, 2009 SERIAL NO. 934



* THIS SHEET HAS BEEN DRAWN USING COMPUTER AIDED DRAFTING/ DESIGN (CAD/D) AND COORDINATE GEOMETRY (COGO).