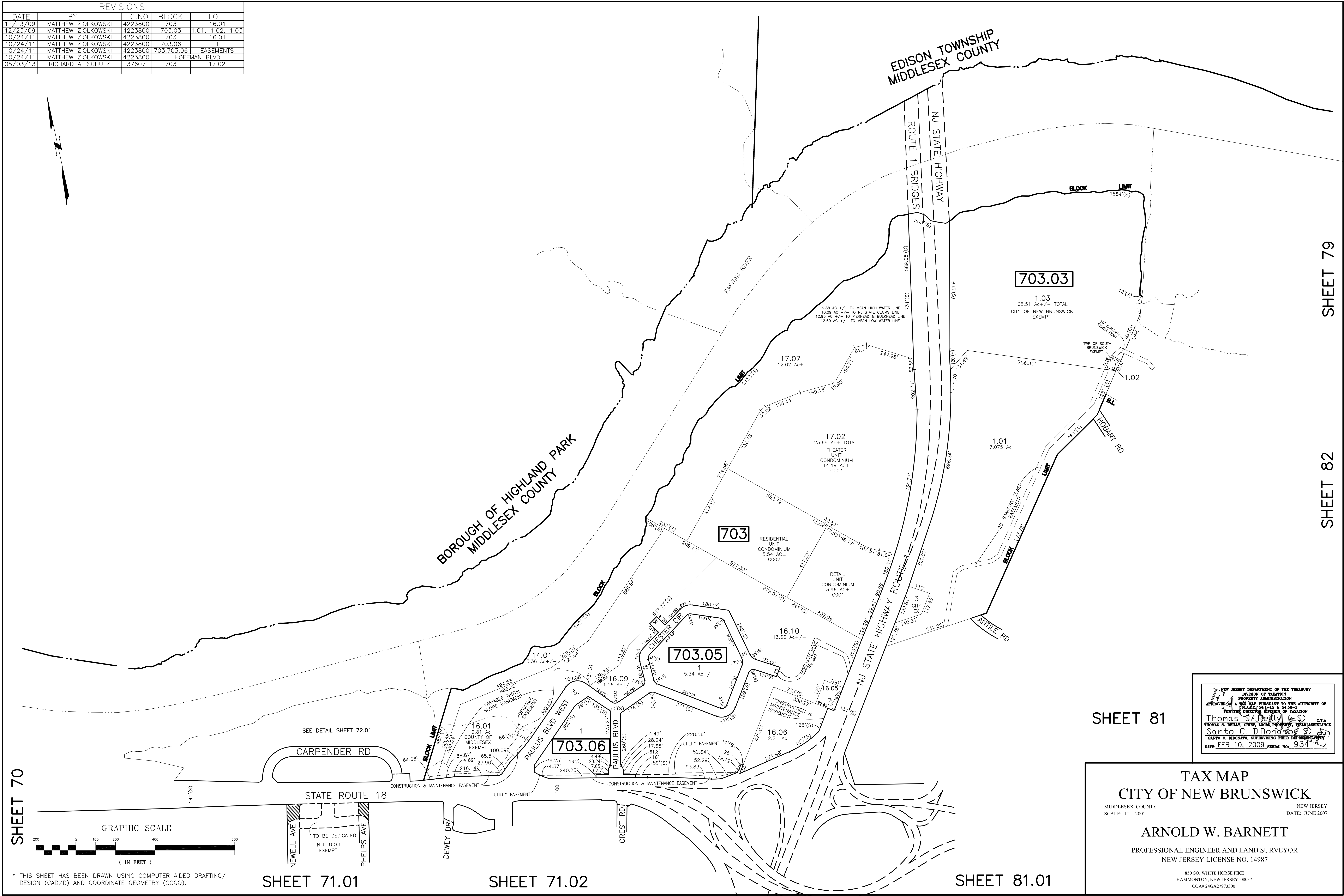
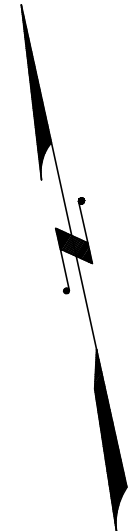


REVISIONS				
DATE	BY	LIC NO	BLOCK	LOT
12/23/09	MATTHEW ZIOLKOWSKI	4223800	703	16.01
12/23/09	MATTHEW ZIOLKOWSKI	4223800	703.03	1.01, 1.02, 1.03
10/24/11	MATTHEW ZIOLKOWSKI	4223800	703	16.01
10/24/11	MATTHEW ZIOLKOWSKI	4223800	703.06	1
10/24/11	MATTHEW ZIOLKOWSKI	4223800	703,703.06	EASEMENTS
10/24/11	MATTHEW ZIOLKOWSKI	4223800		HOFFMAN BLVD
05/03/13	RICHARD A. SCHULZ	37607	703	17.02



SHEET 79

SHEET 82

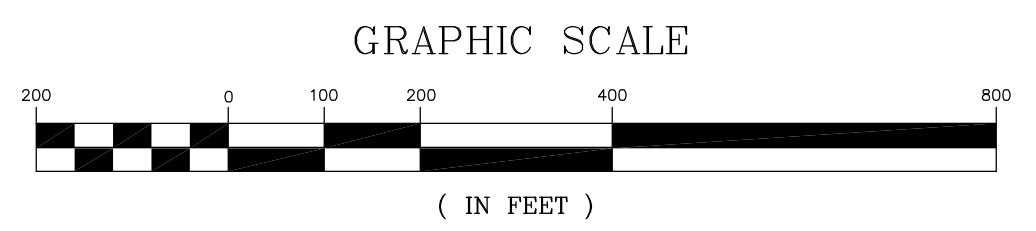
SHEET 81

SHEET 70

SHEET 71.01

SHEET 71.02

SHEET 81.01



* THIS SHEET HAS BEEN DRAWN USING COMPUTER AIDED DRAFTING/ DESIGN (CAD/D) AND COORDINATE GEOMETRY (COGO).

NEW JERSEY DEPARTMENT OF THE TREASURY
DIVISION OF TAXATION
PROPERTY ADMINISTRATION
APPROVED AS A TAX MAP PURSUANT TO THE AUTHORITY OF
PUBLIC LAW 90-564
FOR THE DIRECTOR DIVISION OF TAXATION
Thomas S. Beilly & S. C.T.A.
Thomas S. Beilly, Chief, Local Property, Field Assistance
Santo C. DiDonato, Supervising Field Representative
DATE: FEB. 10, 2009 SERIAL NO. 934

TAX MAP
CITY OF NEW BRUNSWICK
MIDDLESEX COUNTY
SCALE: 1" = 200'
NEW JERSEY
DATE: JUNE 2007
ARNOLD W. BARNETT
PROFESSIONAL ENGINEER AND LAND SURVEYOR
NEW JERSEY LICENSE NO. 14987
850 SO. WHITE HORSE PIKE
HAMMONTON, NEW JERSEY 08037
COA# 24GA27973300