

REVISIONS				
DATE	BY	LIC. NO.	BLOCK	LOT
04/2008	ARNOLD W. BARNETT	14987	707.02	35.03
06/23/09	MATTHEW ZIOLKOWSKI	4223800	710.01	3.03

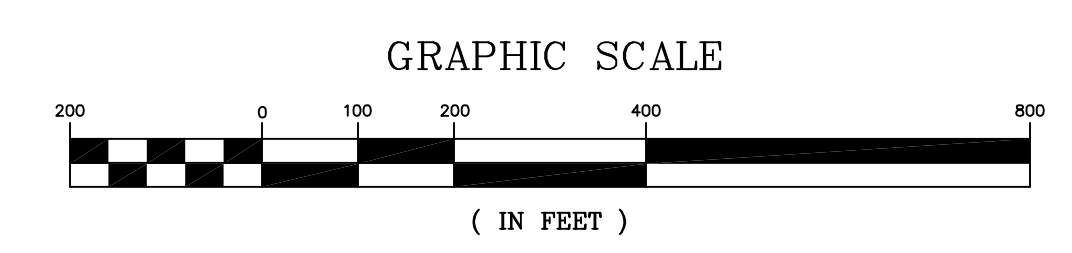
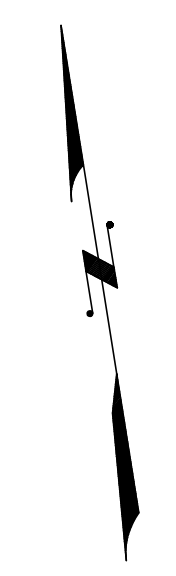
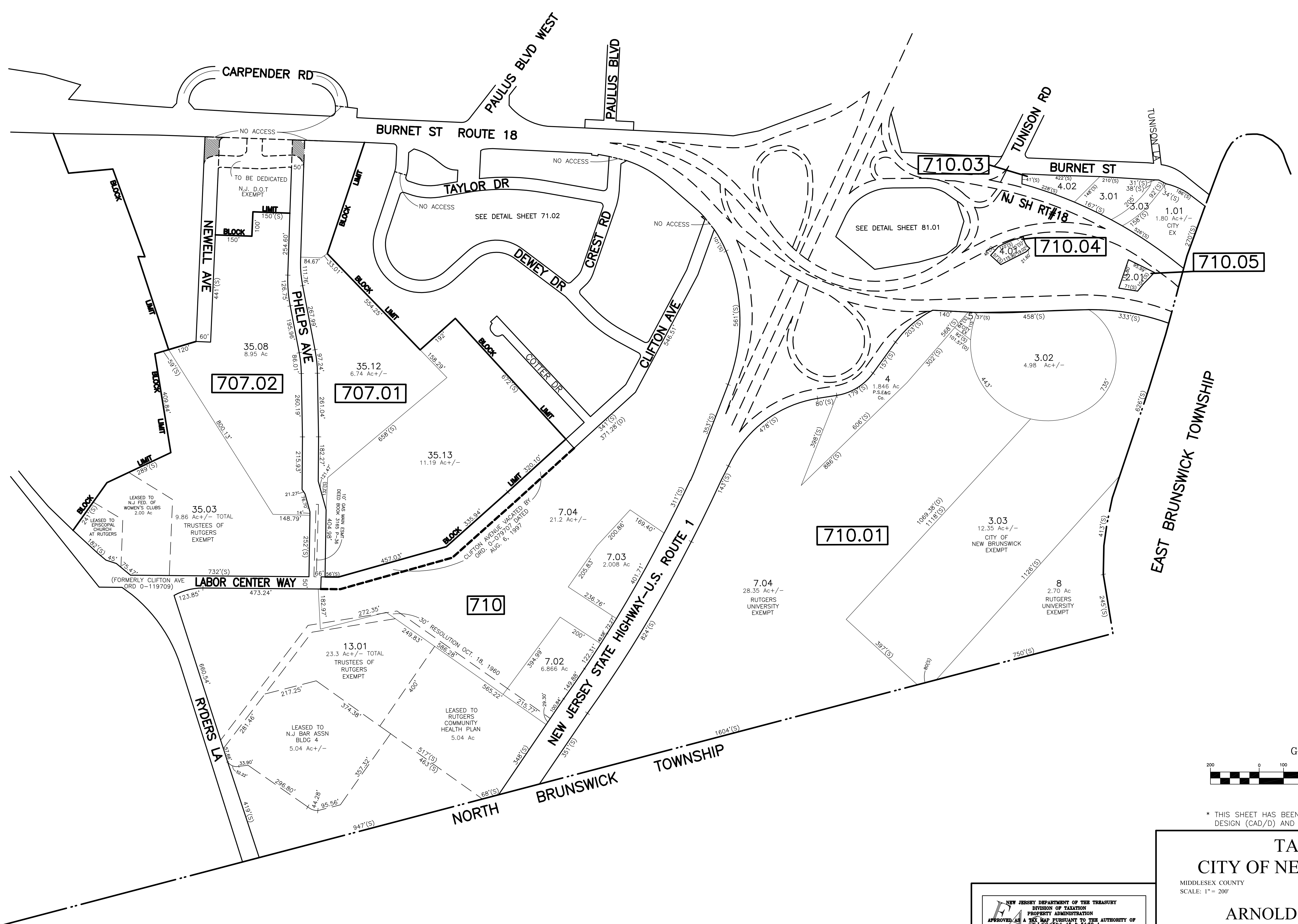
SHEET 72.01

SHEET 72

SHEET 81.01

SHEET 70

SHEET 79.01



\* THIS SHEET HAS BEEN DRAWN USING COMPUTER AIDED DRAFTING/ DESIGN (CAD/D) AND COORDINATE GEOMETRY (COGO).

**TAX MAP**  
**CITY OF NEW BRUNSWICK**  
 MIDDLESEX COUNTY NEW JERSEY  
 SCALE: 1" = 200' DATE: JUNE 2007

**ARNOLD W. BARNETT**  
 PROFESSIONAL ENGINEER AND LAND SURVEYOR  
 NEW JERSEY LICENSE NO. 14987

850 SO. WHITE HORSE PIKE  
 HAMMONTON, NEW JERSEY 08037  
 COA# 24GA27973300

NEW JERSEY DEPARTMENT OF THE TREASURY  
 DIVISION OF TAXATION  
 PROPERTY ADMINISTRATION  
 APPROVED AS A TAX MAP PURSUANT TO THE AUTHORITY OF  
 N.J.A.C. 17:27-15 & 17:27-16  
 FOR THE DIRECTOR, DIVISION OF TAXATION  
**Thomas S. Kelly** (S)  
 THOMAS S. KELLY, CHIEF, LOCAL PROPERTY FIELD ASSISTANCE  
**Santo C. DiDonato** (S)  
 SANTO C. DIDONATO, SUPERVISING FIELD REPRESENTATIVE  
 DATE: FEB 10, 2009 SERIAL NO.: 934