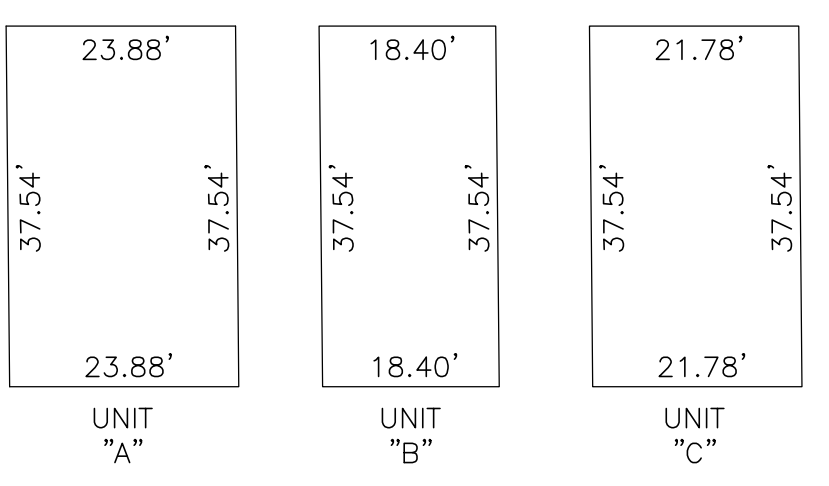
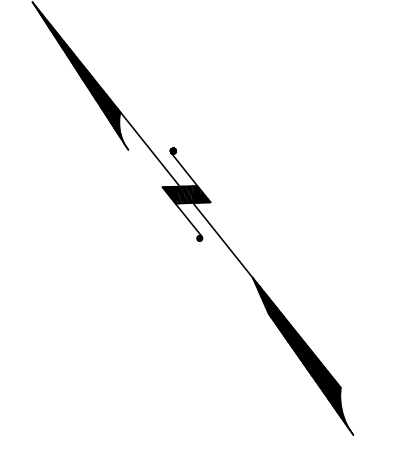


REVISIONS				
DATE	BY	LIC. NO.	BLOCK	LOT

DOUGLASS ESTATES NO CONDO BLOCK 137		
LOT NO.	UNIT TYPE	SQ. FT.
502	C	1407
503	B	1407
504	B	1407
505	B	1407
506	C	1407
507	C	1407
508	B	1407
509	B	1407
510	B	1407
511	C	1407
512	C	1407
513	B	1407
514	B	1407
515	C	1407
516	A	1460
517	B	1407
518	B	1407
519	B	1407
520	B	1407
521	A	1460



SCALE: 1" = 20'



SHEET 59

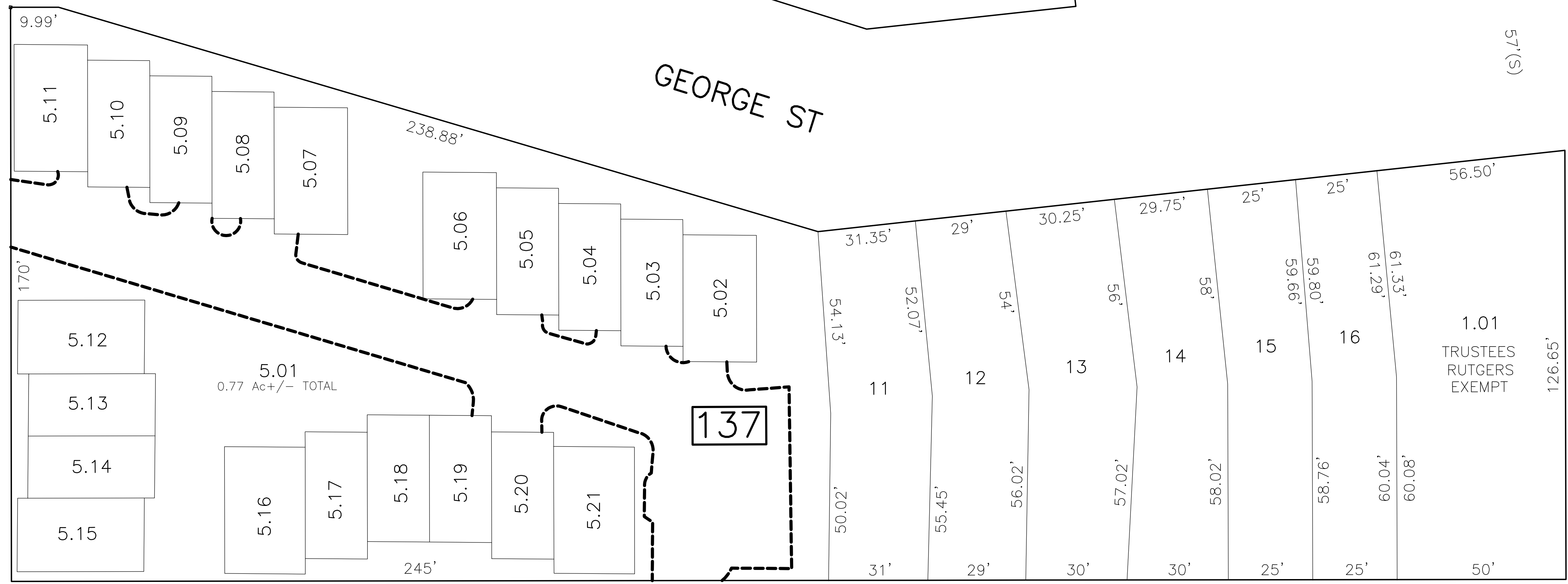
COMMERCIAL AVE

BISHOP ST

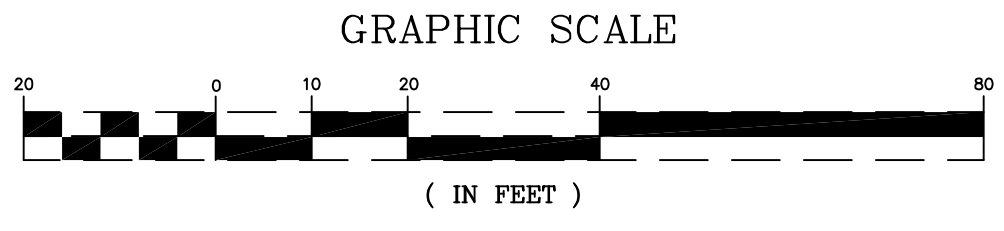
GEORGE ST

JONES AVE

REDMOND ST



* THIS SHEET HAS BEEN DRAWN USING COMPUTER AIDED DRAFTING/ DESIGN (CAD/D) AND COORDINATE GEOMETRY (COGO).



SHEET 66

NEW JERSEY DEPARTMENT OF THE TREASURY
DIVISION OF TAXATION
PROPERTY ADMINISTRATION
APPROVED AS A FEE MAP PURSUANT TO THE AUTHORITY OF
N.J.A.C. 17:27-15 & 17:27-16
FOR THE DIRECTOR, DIVISION OF TAXATION
Thomas S. Reilly (S) C.T.A.
THOMAS S. REILLY, CHIEF, LOCAL PROPERTY FIELD ASSISTANCE
Santo C. DiDonato (S) C.T.A.
SANTO C. DIDONATO, SUPERVISING FIELD REPRESENTATIVE
DATE: FEB 10, 2009 SERIAL NO. 934

TAX MAP
CITY OF NEW BRUNSWICK
MIDDLESEX COUNTY
SCALE: 1" = 20'
NEW JERSEY
DATE: JUNE 2007
ARNOLD W. BARNETT
PROFESSIONAL ENGINEER AND LAND SURVEYOR
NEW JERSEY LICENSE NO. 14987
850 SO. WHITE HORSE PIKE
HAMMONTON, NEW JERSEY 08037
COA# 24GA27973300