

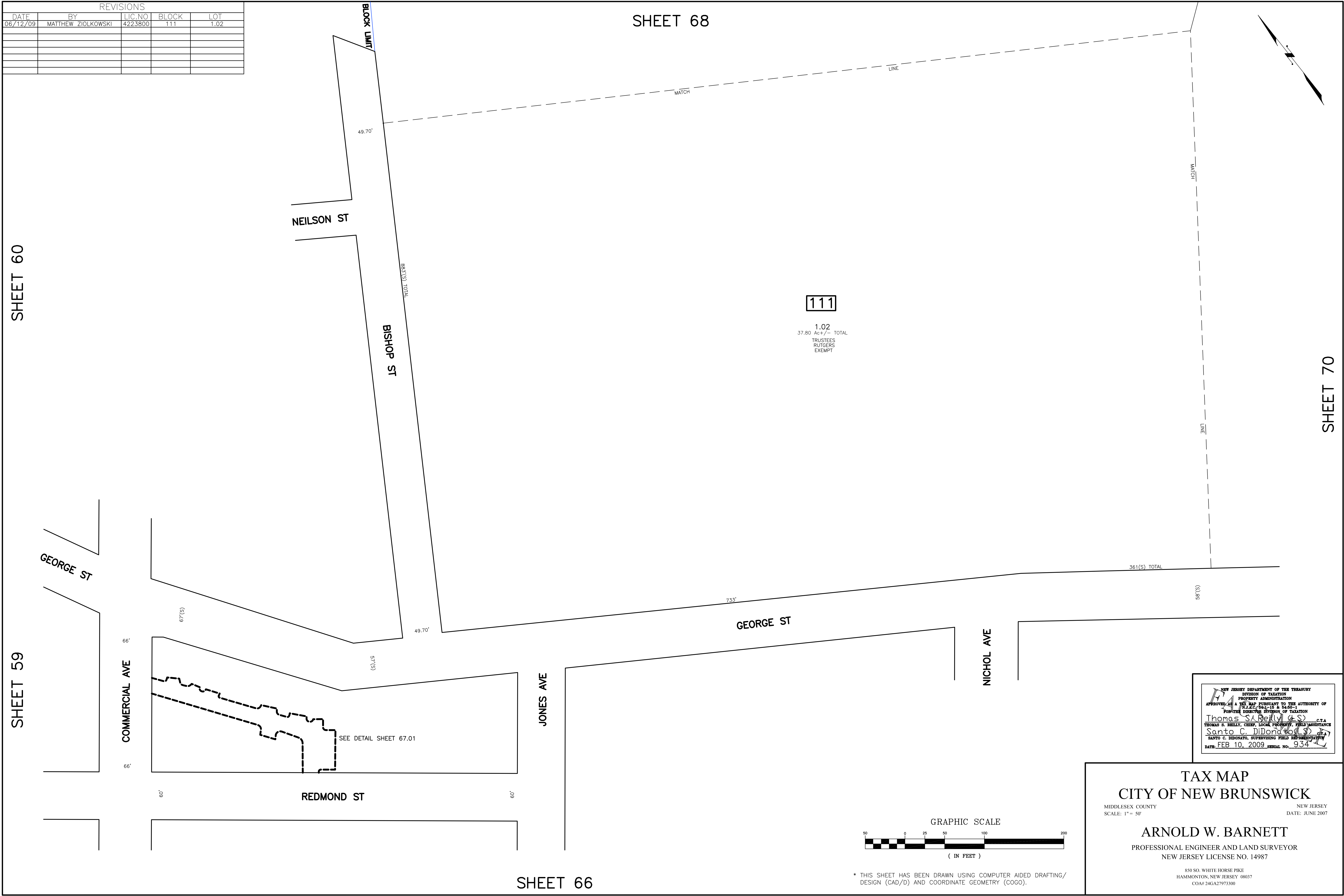
SHEET 68

REVISIONS				
DATE	BY	LIC. NO.	BLOCK	LOT
06/12/09	MATTHEW ZIOLKOWSKI	4223800	111	1.02

SHEET 60

SHEET 59

SHEET 70



111

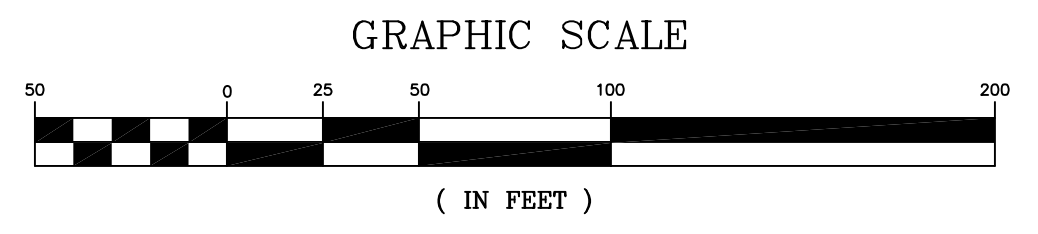
1.02  
37.80 Ac +/- TOTAL  
TRUSTEES  
RUTGERS  
EXEMPT

NEW JERSEY DEPARTMENT OF THE TREASURY  
DIVISION OF TAXATION  
PROPERTY ADMINISTRATION  
APPROVED AS A TAX MAP PURSUANT TO THE AUTHORITY OF  
PUBLIC LAW 90-12 & 94-1  
FOR THE DIRECTOR, DIVISION OF TAXATION  
Thomas S. Reilly, C.T.A.  
THOMAS S. REILLY, CHIEF, LOCAL PROPERTY FIELD ASSISTANCE  
Santo C. DiDonato, C.T.A.  
SANTO C. DIDONATO, SUPERVISING FIELD REPRESENTATIVE  
DATE: FEB. 10, 2009 SERIAL NO. 934

TAX MAP  
CITY OF NEW BRUNSWICK  
MIDDLESEX COUNTY  
SCALE: 1" = 50'

ARNOLD W. BARNETT  
PROFESSIONAL ENGINEER AND LAND SURVEYOR  
NEW JERSEY LICENSE NO. 14987

850 SO. WHITE HORSE PIKE  
HAMMONTON, NEW JERSEY 08037  
COA# 24GA27973300



\* THIS SHEET HAS BEEN DRAWN USING COMPUTER AIDED DRAFTING/  
DESIGN (CAD/D) AND COORDINATE GEOMETRY (COGO).

SHEET 66