

REVISIONS				
DATE	BY	LIC NO	BLOCK	LOT
05/17/13	RICHARD A. SCHULZ	37607	156	1.01
05/17/13	RICHARD A. SCHULZ	37607	173	1, 2
05/17/13	RICHARD A. SCHULZ	37607	174	2,3

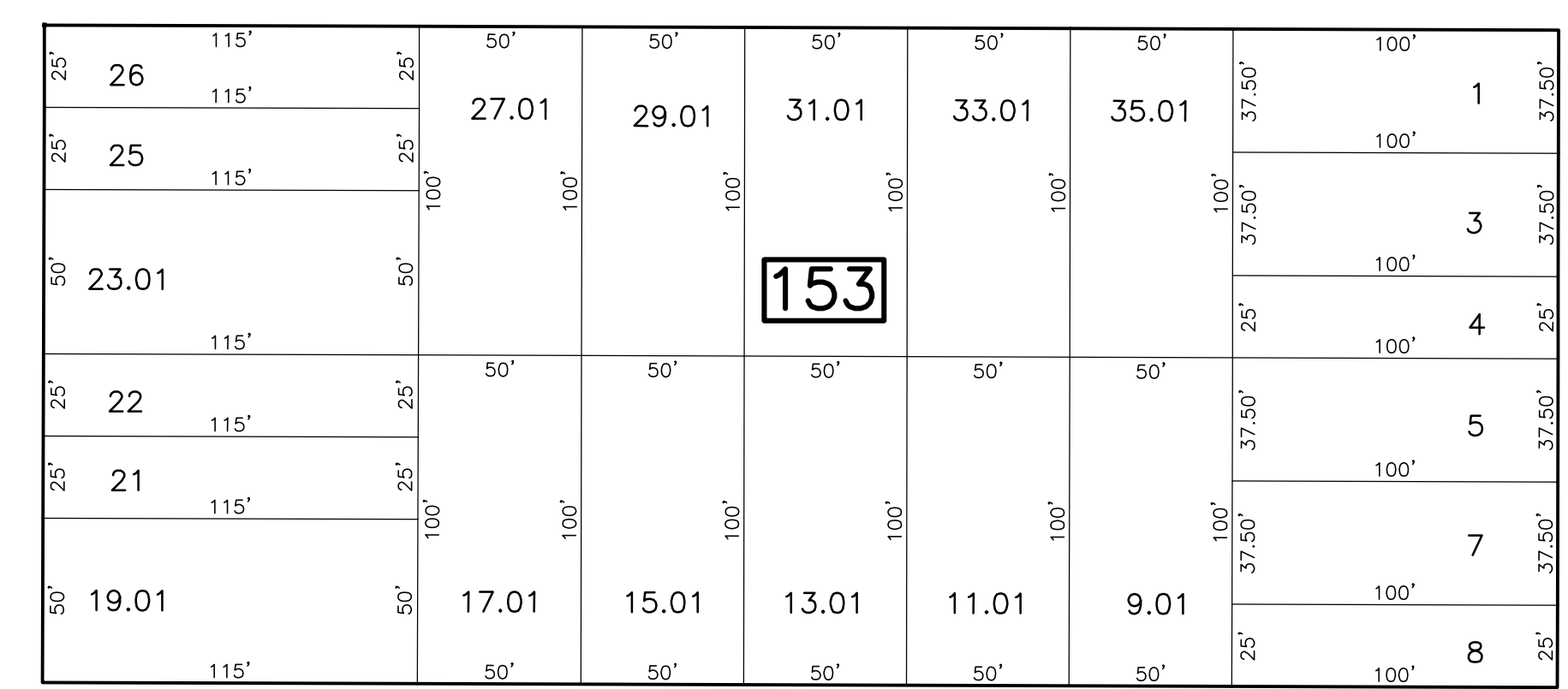
SHEET 60

BISHOP ST

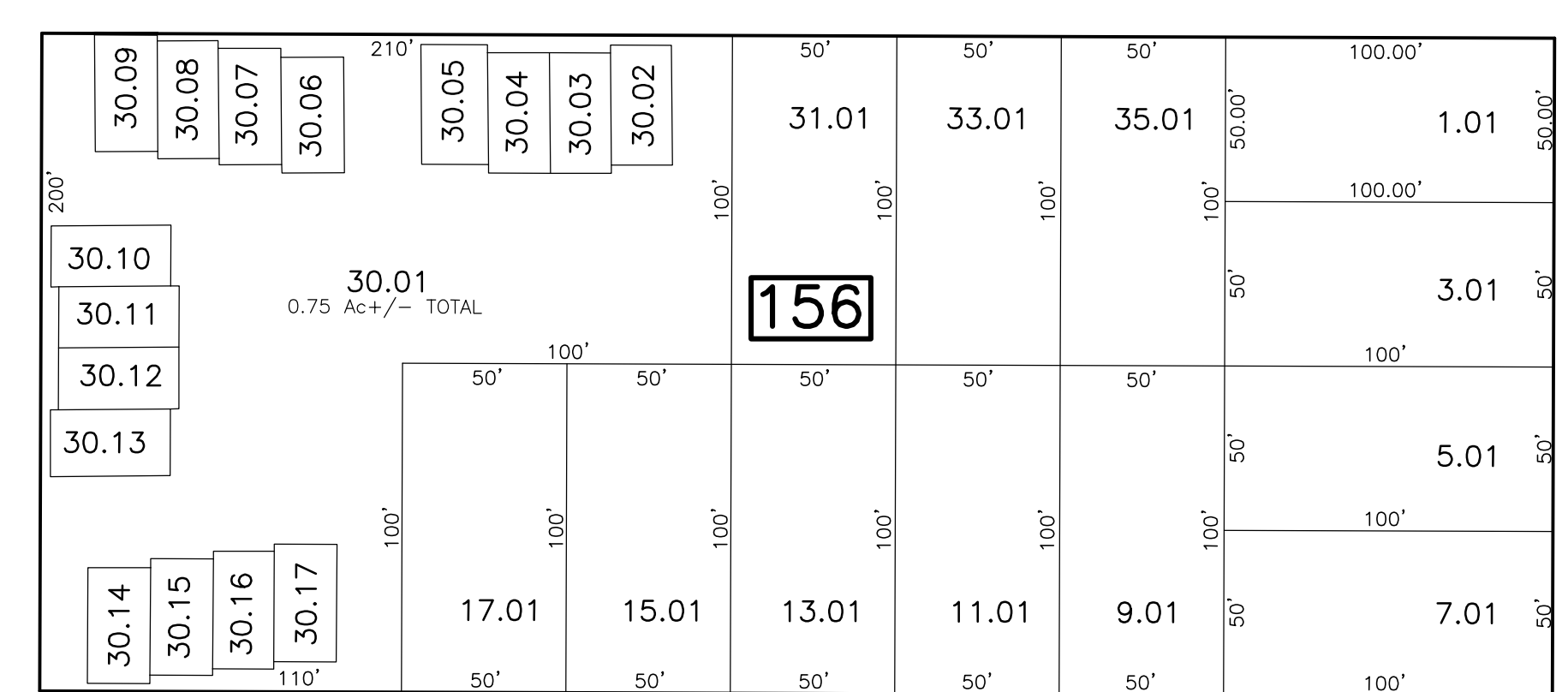
SHEET 67

GEORGE ST

REDMOND ST



TOWNSEND ST

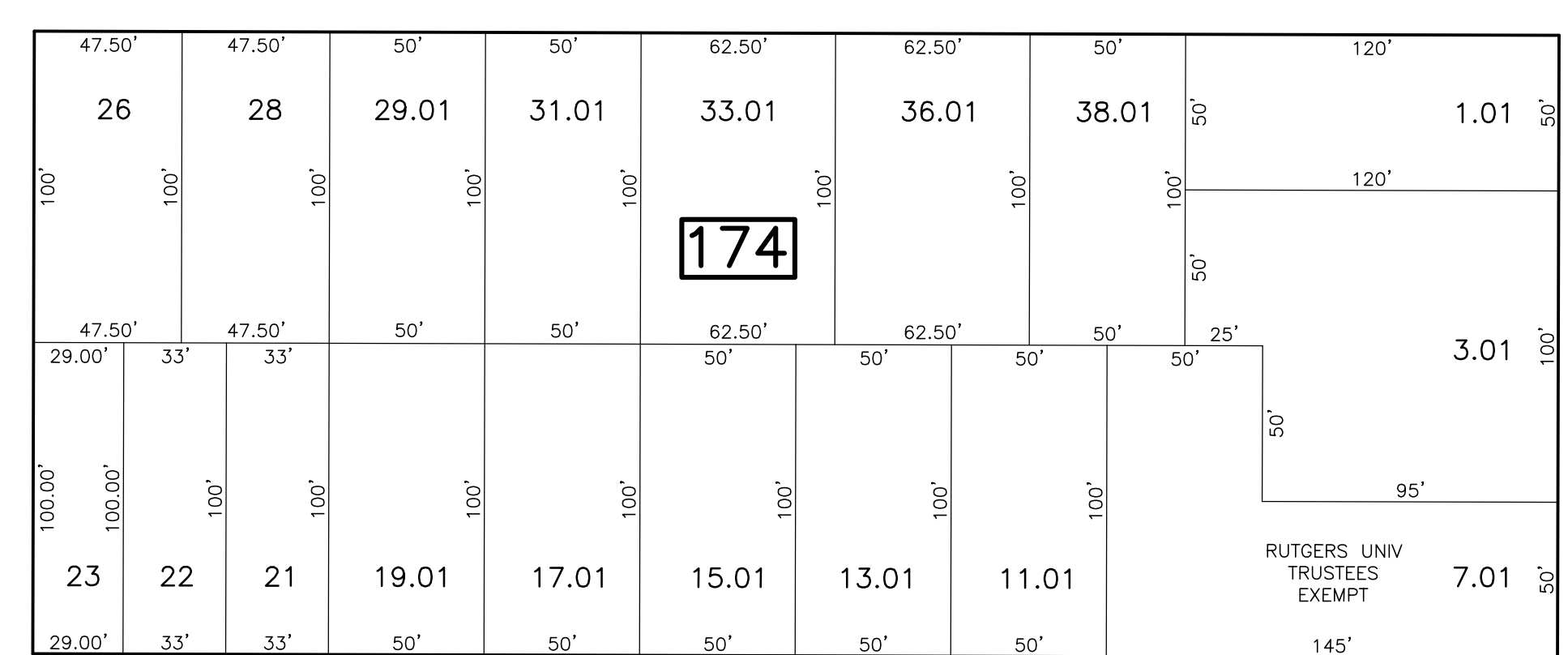


JONES AVE

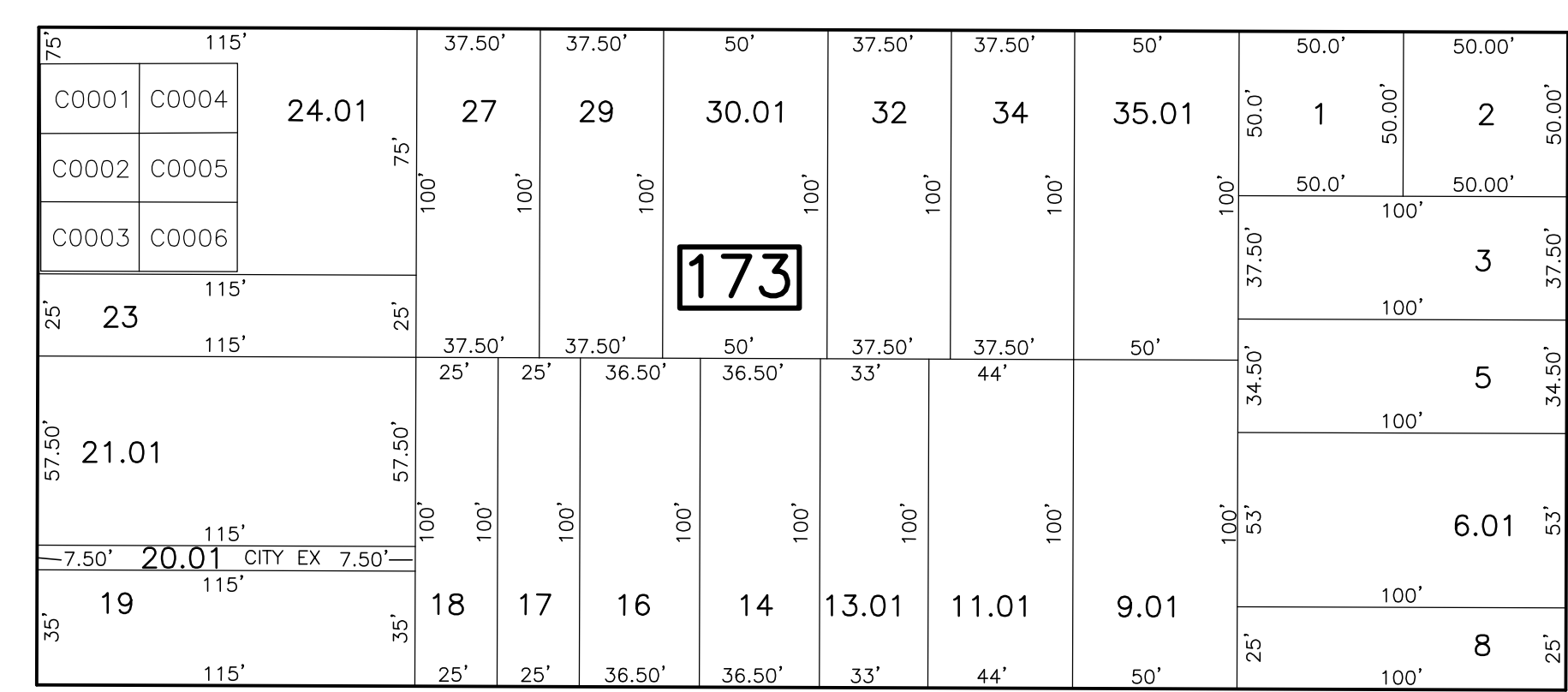
TOWNSEND ST  
VACATED BY ORD JUNE 17, 1930

NICHOL AVE

SUYDAM ST



SEAMAN ST



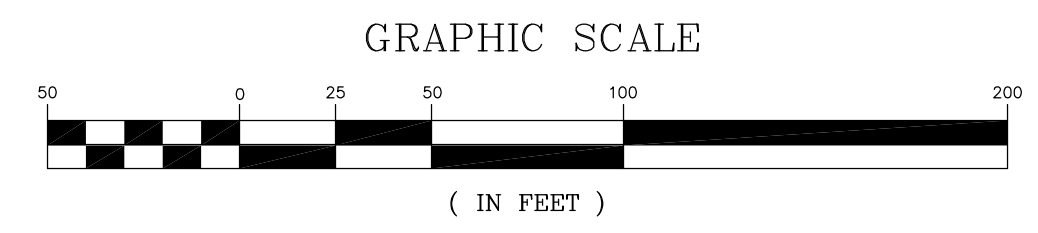
SHEET 65

SHEET 58

SHEET 70

DOUGLASS ESTATES SOUTH CONDO BLOCK 156-3001		
LOT	FLOOR	SQ. FT.
30.02	3S 2BR	1407
30.03	3S 2BR	1407
30.04	3S 2BR	1407
30.05	3S 2BR	1407
30.06	3S 2BR	1407
30.07	3S 2BR	1407
30.08	3S 2BR	1407
30.09	3S 2BR	1407
30.10	3S 2BR	1407
30.11	3S 2BR	1407
30.12	3S 2BR	1407
30.13	3S 2BR	1407
30.14	3S 2BR	1407
30.15	3S 2BR	1407
30.16	3S 2BR	1407
30.17	3S 2BR	1407

DOUGLASS VILLAGE CONDO BLOCK 173 LOT 2401		
QUAL	UNIT TYPE	SQ. FT.
C0001	2S 3BR END	1240
C0002	2S 3BR INT	1240
C0003	2S 3BR END	1240
C0004	2S 3BR END	1240
C0005	2S 3BR INT	1240
C0006	2S 3BR END	1240



NEW JERSEY DEPARTMENT OF THE TREASURY  
 DIVISION OF TAXATION  
 PROPERTY ADMINISTRATION  
 APPROVED AS A TAX MAP PURSUANT TO THE AUTHORITY OF PUBLIC LAW 93-502 & 93-503  
 FOR THE DIRECTOR, DIVISION OF TAXATION  
 Thomas S. Reilly, C.T.A.  
 Thomas S. Reilly, Chief, Local Property, Field Assistance  
 Santo C. DiDonato, Supervising Field Representative  
 DATE: FEB. 10, 2009 SERIAL NO. 934

**TAX MAP**  
**CITY OF NEW BRUNSWICK**  
 MIDDLESEX COUNTY NEW JERSEY  
 SCALE: 1" = 50' DATE: JUNE 2007  
**ARNOLD W. BARNETT**  
 PROFESSIONAL ENGINEER AND LAND SURVEYOR  
 NEW JERSEY LICENSE NO. 14987  
 850 SO. WHITE HORSE PIKE  
 HAMMONTON, NEW JERSEY 08037  
 COA# 24GA27973300

\* THIS SHEET HAS BEEN DRAWN USING COMPUTER AIDED DRAFTING/ DESIGN (CAD/D) AND COORDINATE GEOMETRY (COGO).