

EVERGREEN DR
(Private)

CEDAR ST

COMMERCIAL AVE

LAWRENCE ST

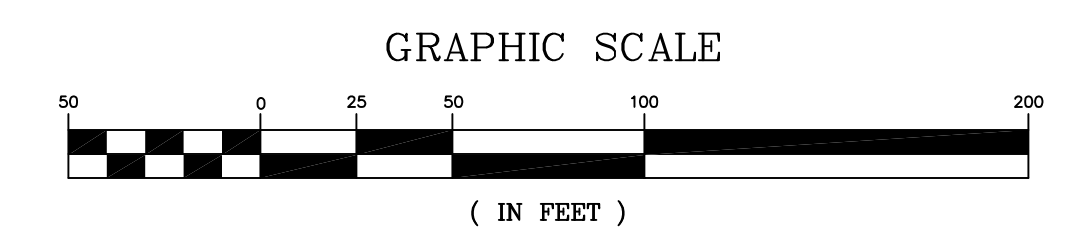
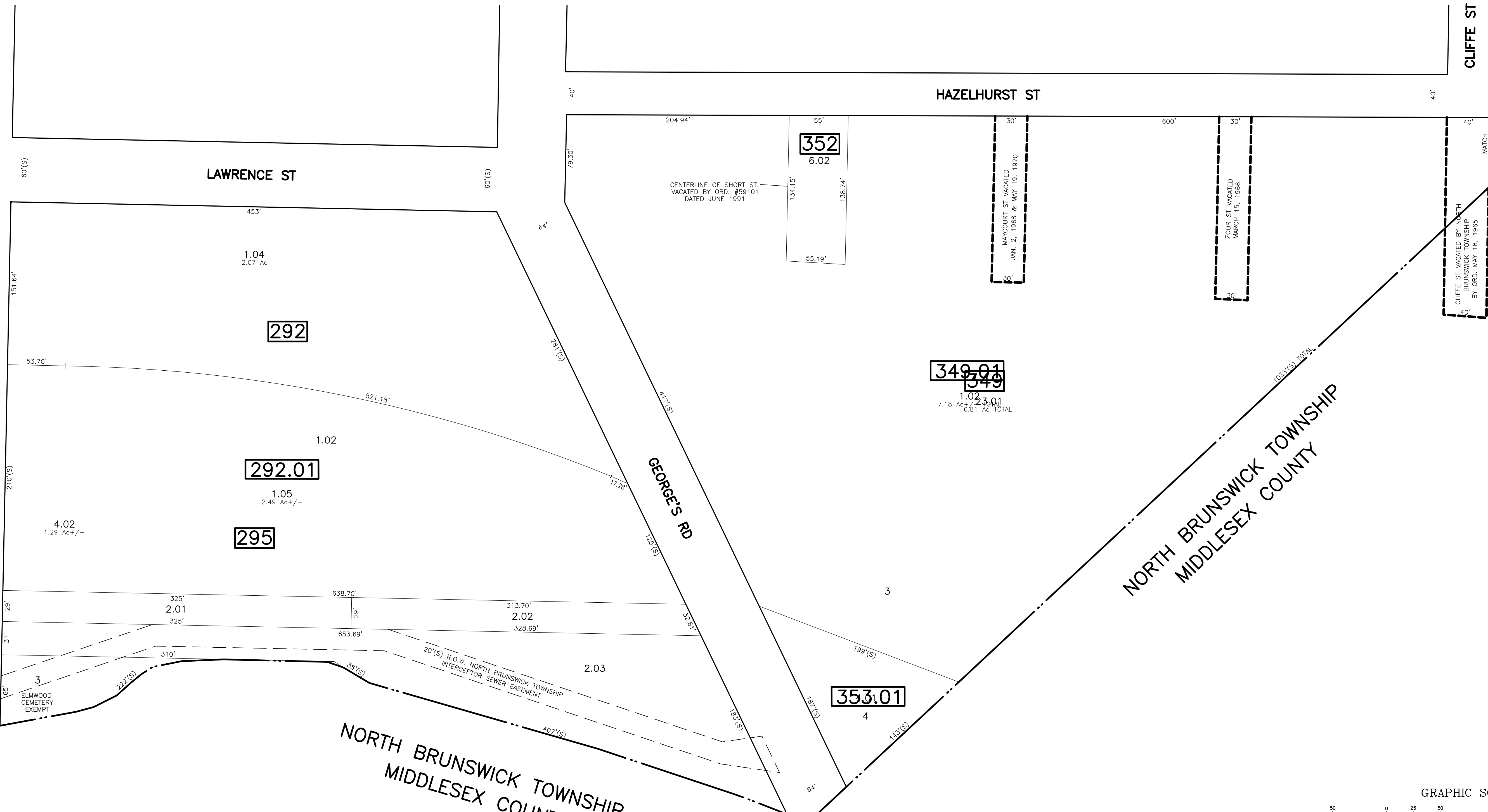
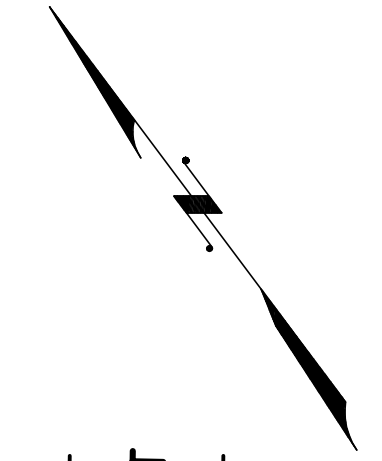
HAZELHURST ST

CLIFFE ST

GEORGE'S RD

NORTH BRUNSWICK TOWNSHIP
MIDDLESEX COUNTY

NORTH BRUNSWICK TOWNSHIP
MIDDLESEX COUNTY



* THIS SHEET HAS BEEN DRAWN USING COMPUTER AIDED DRAFTING/
DESIGN (CAD/D) AND COORDINATE GEOMETRY (COGO).

REVISIONS				
DATE	BY	LIC. NO	BLOCK	LOT
04/2008	ARNOLD W. BARNETT	14987	292, 295	
04/2008	ARNOLD W. BARNETT	14987	295	2
04/2008	ARNOLD W. BARNETT	14987	292, 295	1.02, 4.02
04/2008	ARNOLD W. BARNETT	14987	349, 352	
04/2008	ARNOLD W. BARNETT	14987	349	3, 23.01
04/2008	ARNOLD W. BARNETT	14987	349	4
04/2008	ARNOLD W. BARNETT	14987	292.01	1.01
04/2008	ARNOLD W. BARNETT	14987	292.01	1.03

NEW JERSEY DEPARTMENT OF THE TREASURY
DIVISION OF TAXATION
PROPERTY ADMINISTRATION
APPROVED AS A SEE MAP PURSUANT TO THE AUTHORITY OF
N.J.A.C. 17:27-15 & 16.62-1
FOR THE DIRECTOR, DIVISION OF TAXATION
Thomas S. Reilly, C.S.
THOMAS S. REILLY, CHIEF, LOCAL PROPERTY FIELD ASSISTANCE
Santo C. DiDonato, SUPERVISING FIELD REPRESENTATIVE
DATE: FEB 10, 2009 SERIAL No. 934

TAX MAP
CITY OF NEW BRUNSWICK
MIDDLESEX COUNTY
SCALE: 1" = 50'
NEW JERSEY
DATE: JUNE 2007
ARNOLD W. BARNETT
PROFESSIONAL ENGINEER AND LAND SURVEYOR
NEW JERSEY LICENSE NO. 14987
850 SO. WHITE HORSE PIKE
HAMMONTON, NEW JERSEY 08037
COA# 24GA27973300