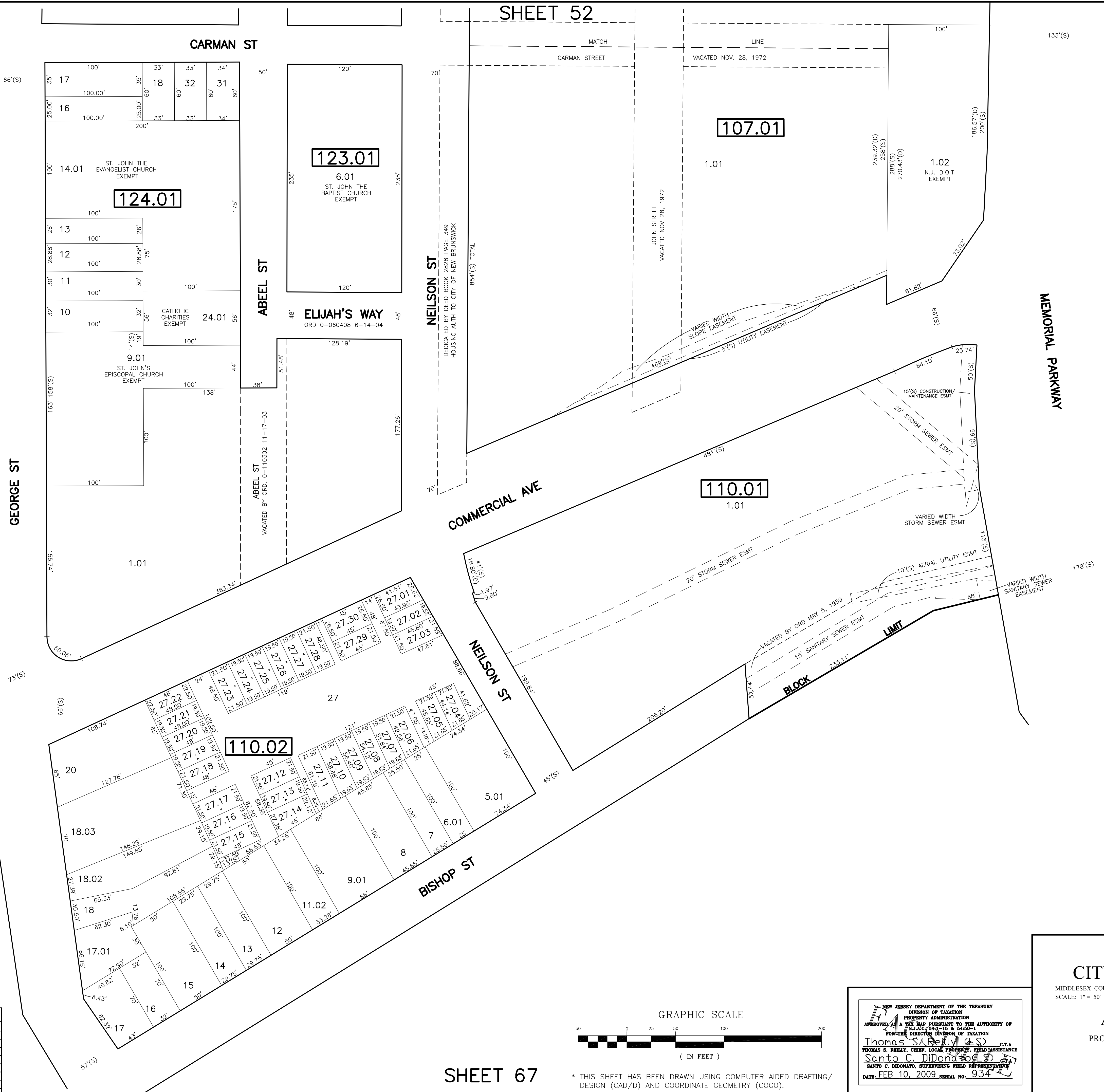


DOUGLAS COURT CONDO
BLOCK 110.02

LOT	UNIT TYPE	SQ. FT.
27.01	B	1516
27.02	C	1428
27.03	B	1516
27.04	B	1516
27.05	B	1516
27.06	B	1516
27.07	A	1374
27.08	D	1374
27.09	A	1374
27.10	A	1374
27.11	B	1516
27.12	B	1516
27.13	A	1374
27.14	B	1516
27.15	B	1516
27.16	A	1374
27.17	B	1516
27.18	B	1516
27.19	A	1374
27.20	A	1374
27.21	A	1374
27.22	B	1516
27.23	B	1516
27.24	A	1374
27.25	A	1374
27.26	A	1374
27.27	A	1374
27.28	B	1516
27.29	A	1516
27.30	B	1516

REVISIONS

DATE	BY	LIC. NO.	BLOCK	LOT
04/2008	ARNOLD W. BARNETT	14987	124.01	24, 25
05/16/13	RICHARD A. SCHULZ	37607	110.02	27.21
05/16/13	RICHARD A. SCHULZ	37607	124.01	16



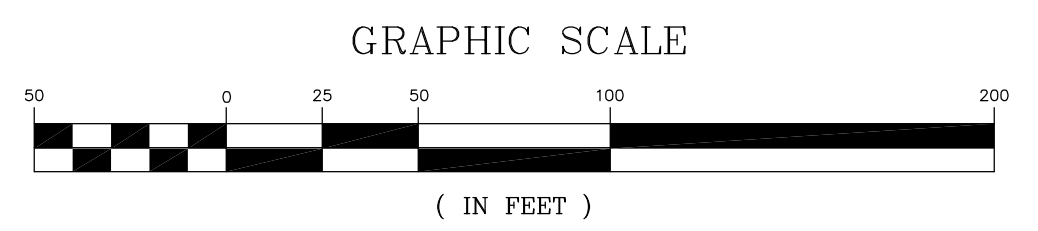
TAX MAP
CITY OF NEW BRUNSWICK
 MIDDLESEX COUNTY
 SCALE: 1" = 50'
 NEW JERSEY
 DATE: JUNE 2007

ARNOLD W. BARNETT
 PROFESSIONAL ENGINEER AND LAND SURVEYOR
 NEW JERSEY LICENSE NO. 14987

850 SO. WHITE HORSE PIKE
 HAMMONTON, NEW JERSEY 08037
 COA# 24GA27973300

NEW JERSEY DEPARTMENT OF THE TREASURY
 DIVISION OF TAXATION
 PROPERTY ADMINISTRATION
 APPROVED AS A TAX MAP PURSUANT TO THE AUTHORITY OF
 N.J.A.C. 17:27-15 & 17:27-16
 FOR THE DIRECTOR, DIVISION OF TAXATION

Thomas S. Bell, C.E.
 Thomas S. Bell, Chief, Local Property Field Assistance
 Santo C. DiDonato, Supervising Field Representative
 DATE: FEB 10, 2009 SERIAL NO.: 934



* THIS SHEET HAS BEEN DRAWN USING COMPUTER AIDED DRAFTING/ DESIGN (CAD/D) AND COORDINATE GEOMETRY (COGO).