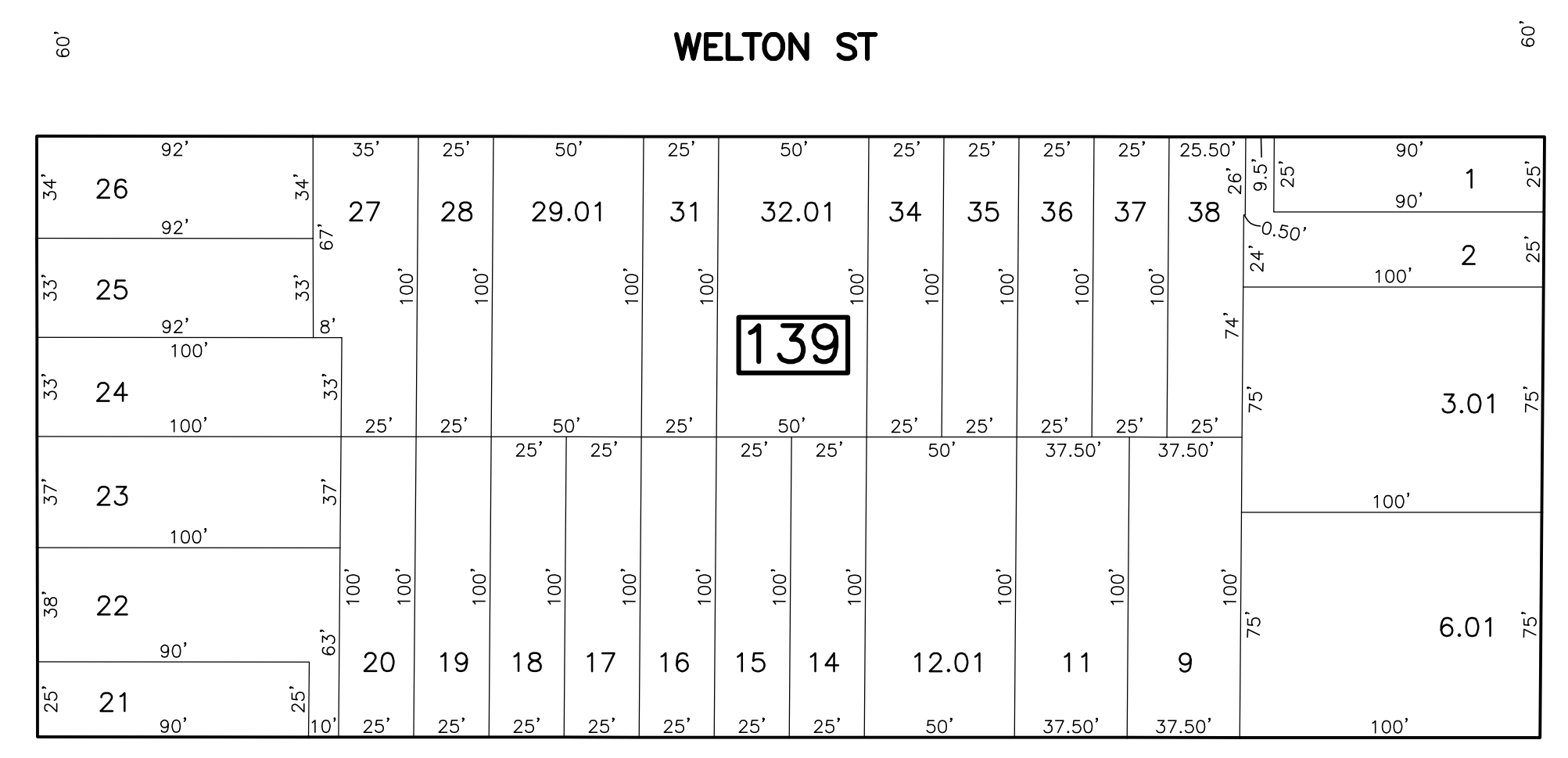
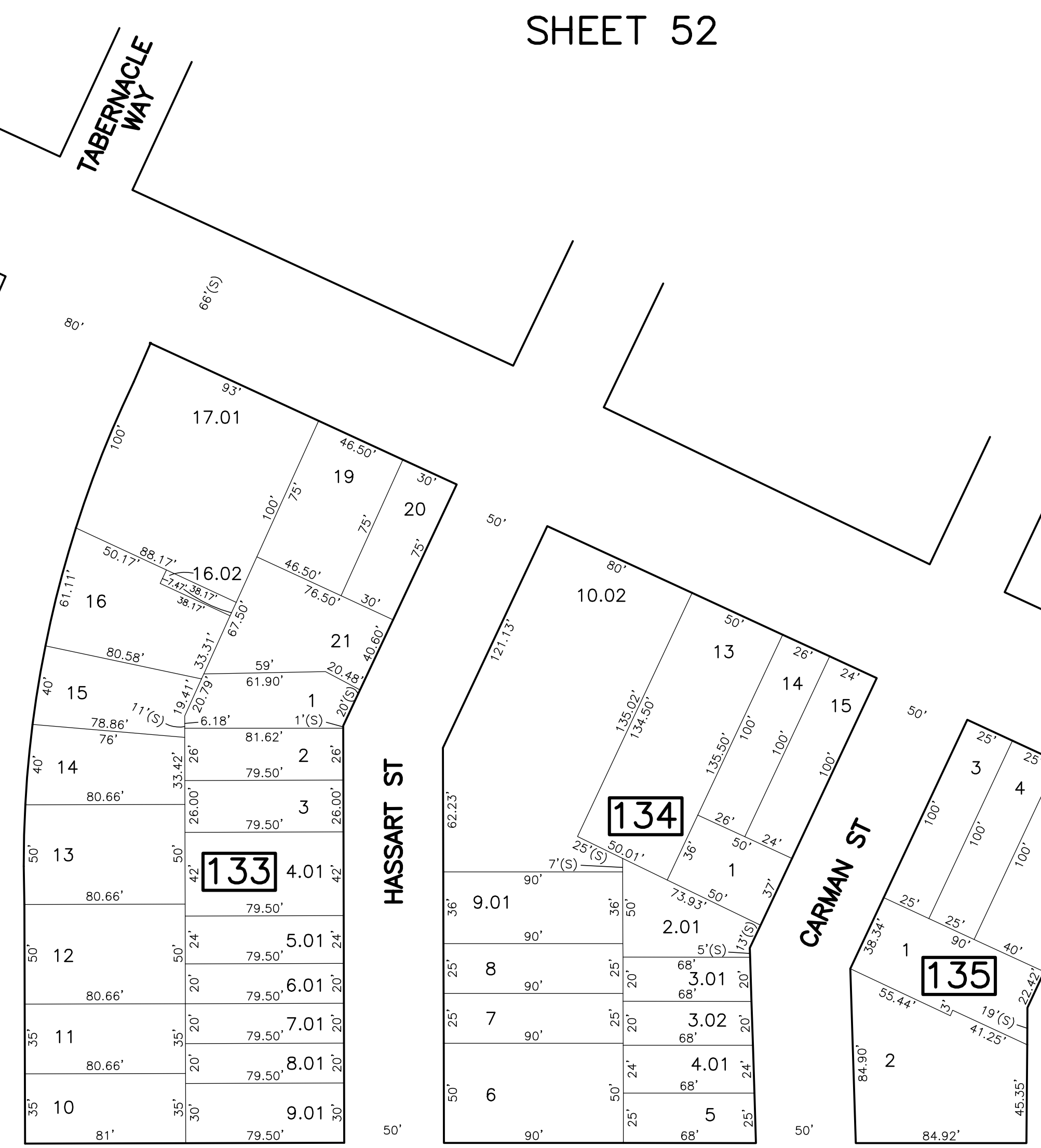


REVISIONS				
DATE	BY	LIC. NO.	BLOCK	LOT
04/2008	ARNOLD W. BARNETT	14987	133	17.01
05/16/13	RICHARD A. SCHULZ	37607	136	1.01
05/16/13	RICHARD A. SCHULZ	37607	133	3

SHEET 46

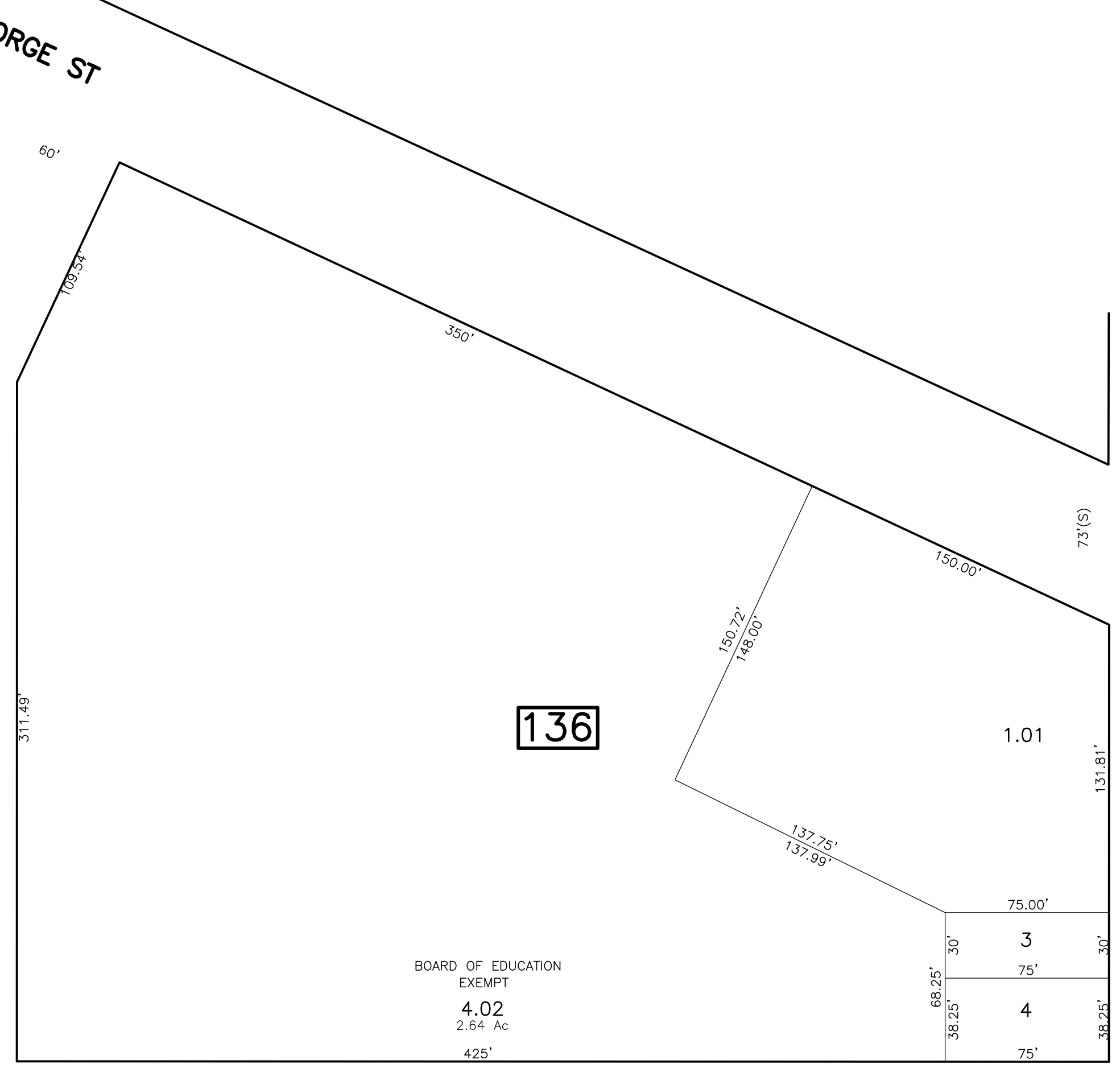
REMPSEN AVE



GEORGE ST

THROOP AVE

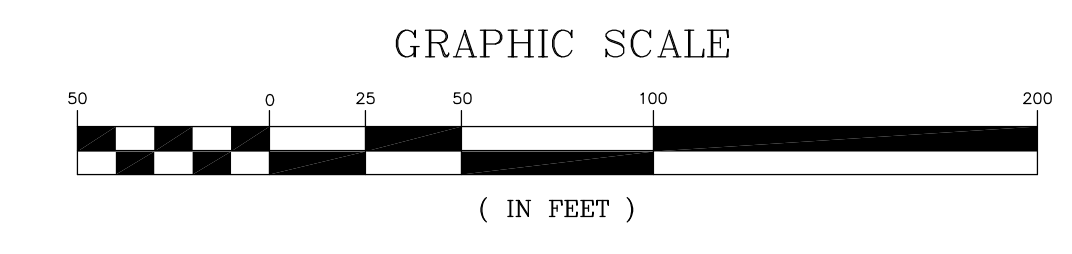
REDMOND ST



COMMERCIAL AVE

SHEET 67

SHEET 58



* THIS SHEET HAS BEEN DRAWN USING COMPUTER AIDED DRAFTING/ DESIGN (CAD/D) AND COORDINATE GEOMETRY (COGO).

NEW JERSEY DEPARTMENT OF THE TREASURY
DIVISION OF TAXATION
PROPERTY ADMINISTRATION
APPROVED AS A PLAN PURSUANT TO THE AUTHORITY OF
N.J.A.C. 17:27-15 & 17:27-16
FOR THE DIRECTOR, DIVISION OF TAXATION
Thomas S. Reilly, P.E.
THOMAS S. REILLY, CHIEF, LOCAL PROPERTY FIELD ASSISTANCE
Santo C. DiDonato, P.E.
SANTO C. DIDONATO, SUPERVISING FIELD REPRESENTATIVE
DATE: FEB 10, 2009 SERIAL No. 934

TAX MAP
CITY OF NEW BRUNSWICK
MIDDLESEX COUNTY
SCALE: 1" = 50'
NEW JERSEY
DATE: JUNE 2007

ARNOLD W. BARNETT
PROFESSIONAL ENGINEER AND LAND SURVEYOR
NEW JERSEY LICENSE NO. 14987

850 SO. WHITE HORSE PIKE
HAMMONTON, NEW JERSEY 08037
COA# 24GA27973300