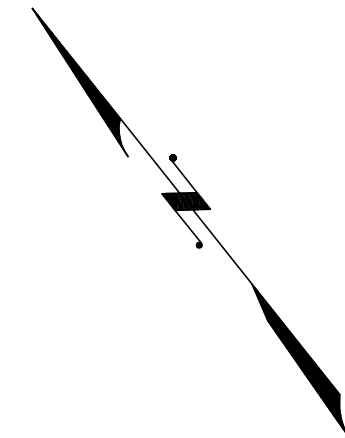
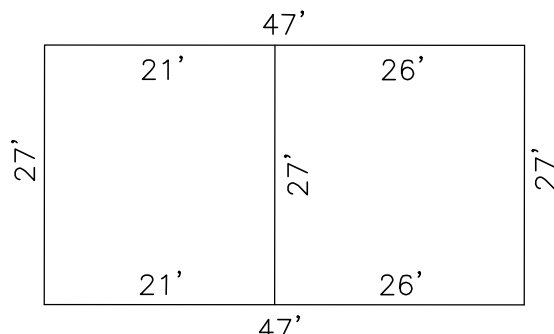
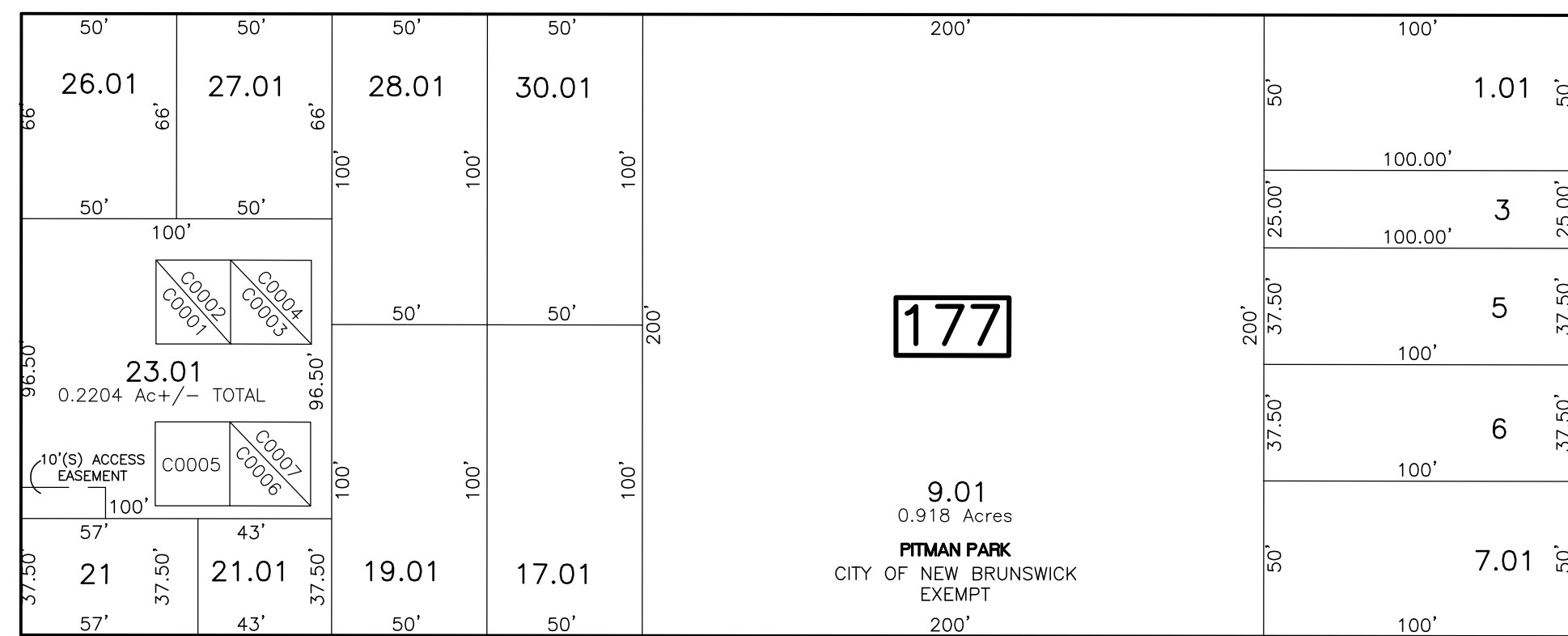
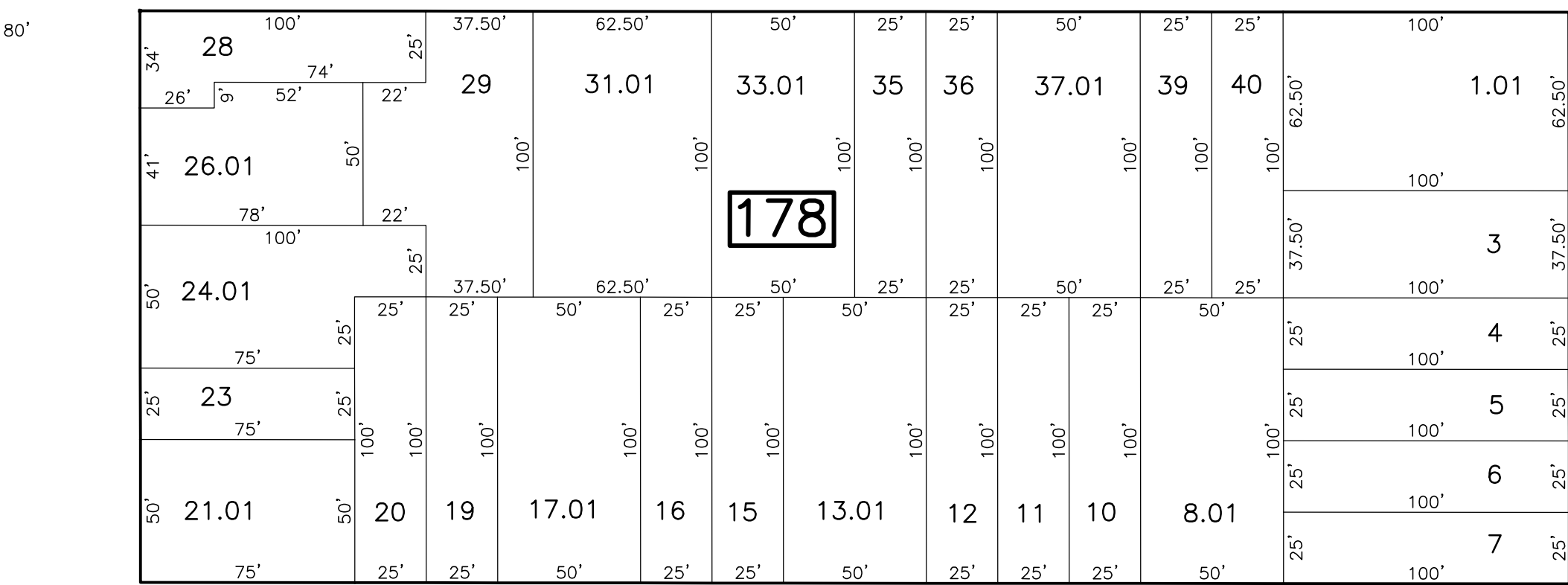


SHEET 58



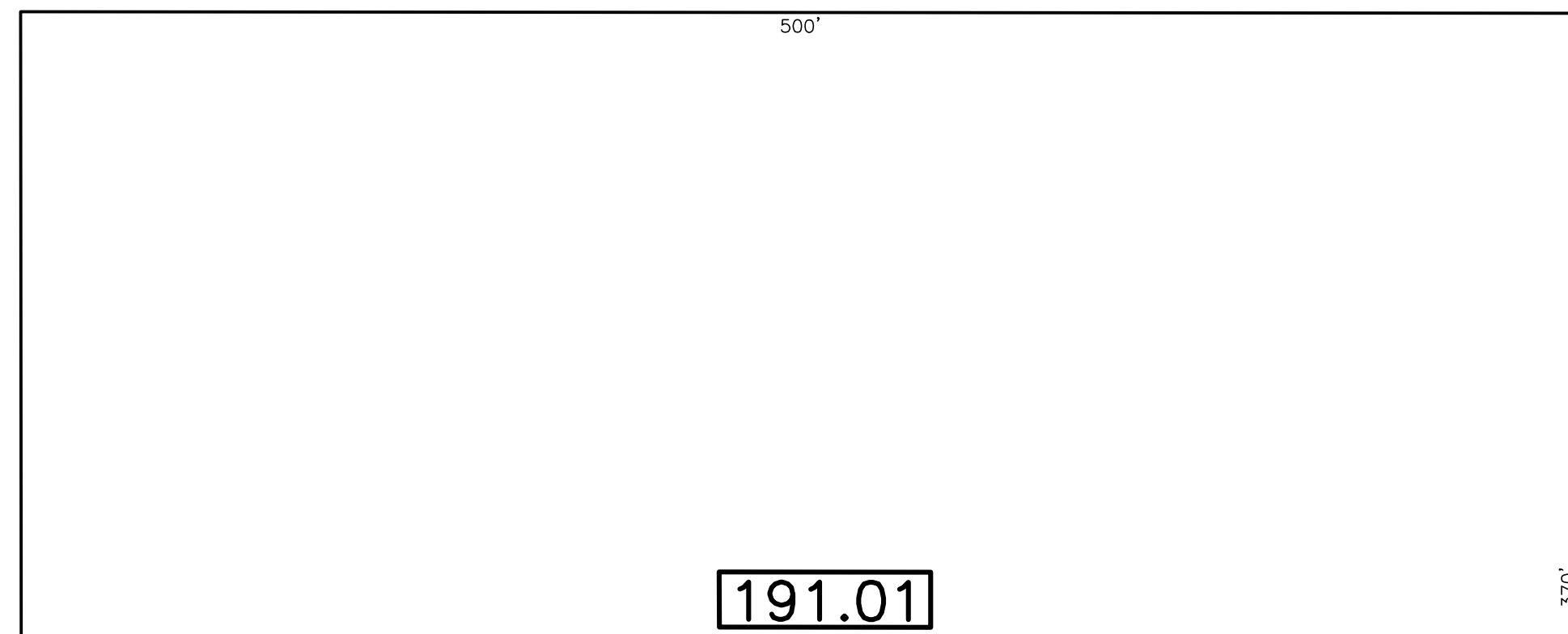
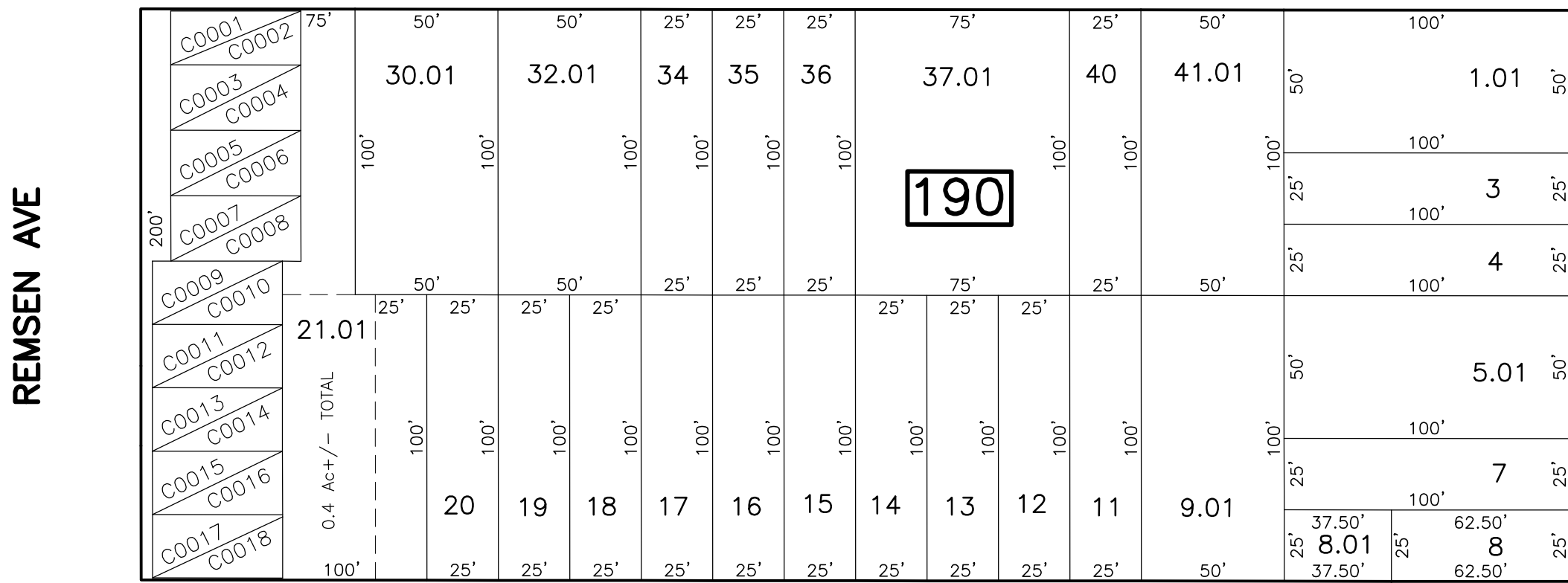
SEAMAN ST



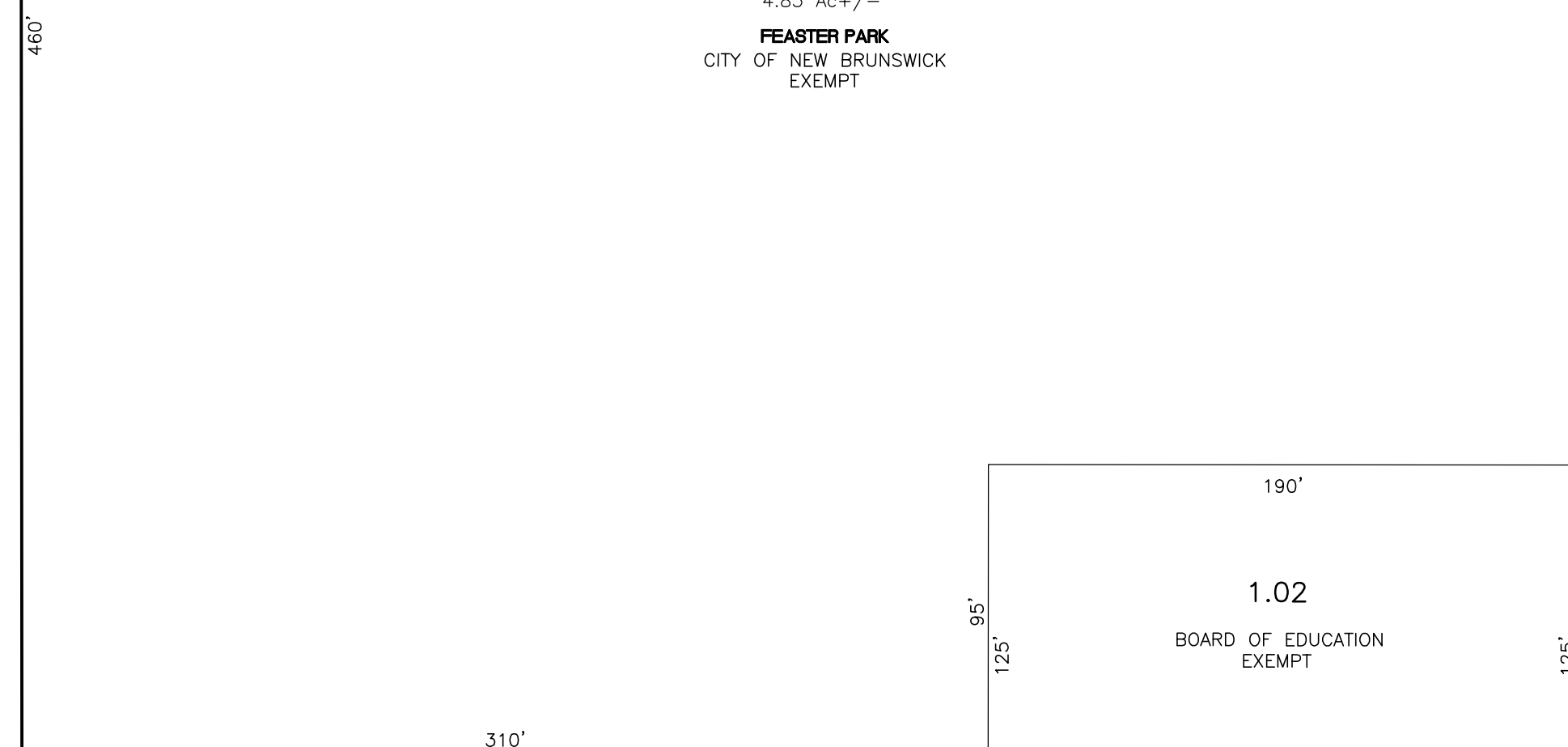
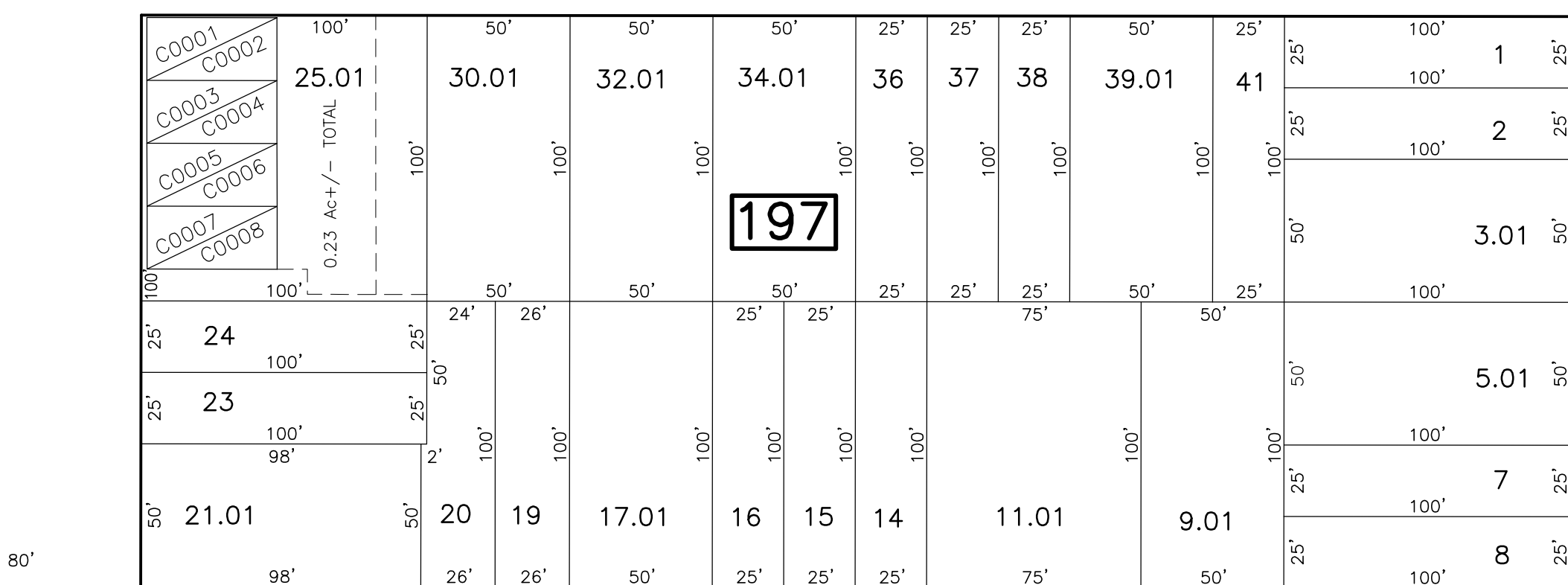
CONDOMINIUM DETAIL SCALE: 1"=20'

HOMAGATE CONDOMINIUM BLOCK 177		
LOT NO.	QUALIFER	FLOOR
23.01	C0001	CF FIRST
	C0002	CF SECOND
	C0003	CF FIRST
	C0004	CF SECOND
	C0005	2S. THE END
	C0006	CF FIRST
	C0007	CF SECOND

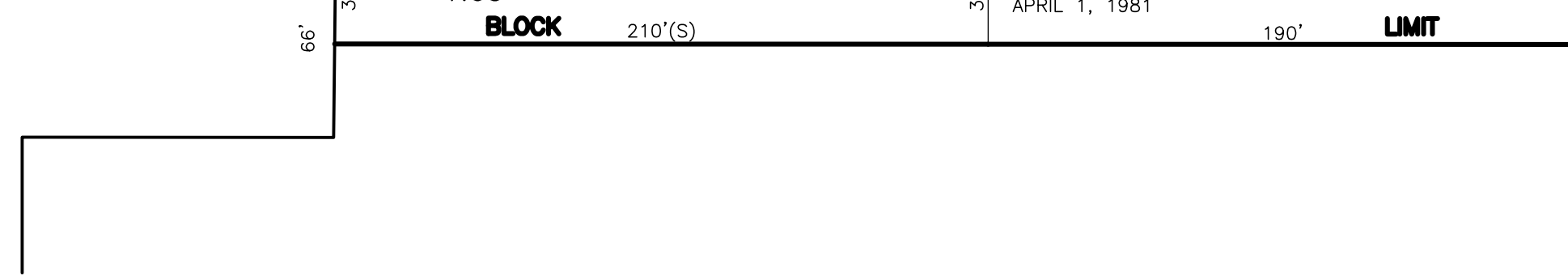
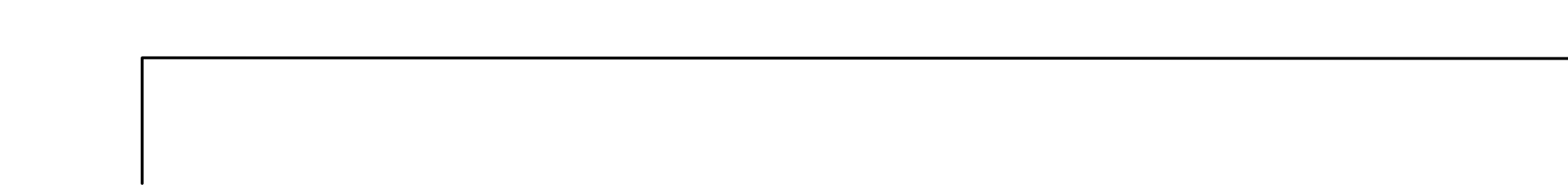
HANDY ST



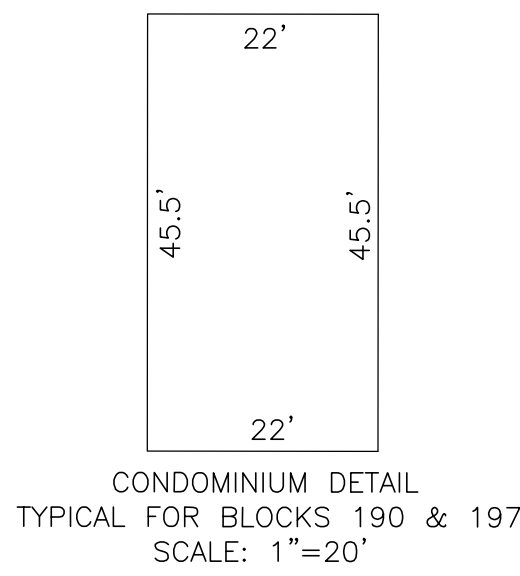
BALDWIN ST



HALE ST



SHEET 45

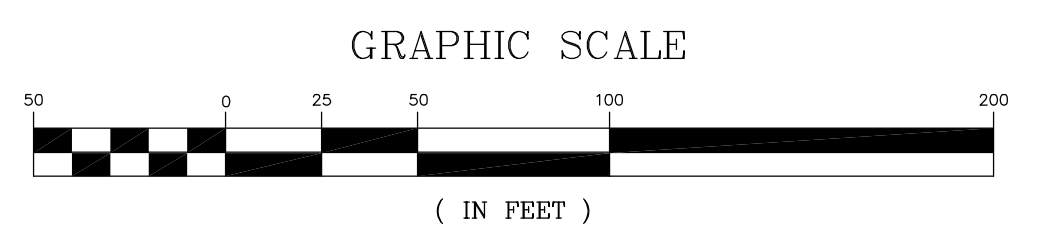


CONDOMINIUM DETAIL TYPICAL FOR BLOCKS 190 & 197 SCALE: 1"=20'

REMSEN BALDWIN HOLMES BLOCK 190 - LOT 21.01			
QUAL.	BUILDING	FLOOR	SQ. FT.
C0001	2	1st	880
C0002	2	2nd & 3rd	1408
C0003	2	1st	880
C0004	2	2nd & 3rd	1408
C0005	2	1st	880
C0006	2	2nd & 3rd	1408
C0007	2	1st	880
C0008	2	2nd & 3rd	1408
C0009	2	1st	880
C0010	2	2nd & 3rd	1408
C0011	2	1st	880
C0012	2	2nd & 3rd	1408
C0013	2	1st	880
C0014	2	2nd & 3rd	1408
C0015	2	1st	880
C0016	2	2nd & 3rd	1408
C0017	2	1st	880
C0018	2	2nd & 3rd	1408

REMSEN BALDWIN HOLMES BLOCK 197 - LOT 25.01			
QUAL.	BUILDING	FLOOR	SQ. FT.
C0001	1	1st	880
C0002	1	2nd & 3rd	1408
C0003	1	1st	880
C0004	1	2nd & 3rd	1408
C0005	1	1st	880
C0006	1	2nd & 3rd	1408
C0007	1	1st	880
C0008	1	2nd & 3rd	1408

REVISIONS				
DATE	BY	LIC. NO.	BLOCK	LOT
06/12/09	MATTHEW ZIOLKOWSKI	4223800	191.01	1.01
05/17/13	RICHARD A. SCHULZ	37607	177	3
05/17/13	RICHARD A. SCHULZ	37607	197	36



* THIS SHEET HAS BEEN DRAWN USING COMPUTER AIDED DRAFTING/ DESIGN (CAD/D) AND COORDINATE GEOMETRY (COGO).

SHEET 56

TAX MAP
CITY OF NEW BRUNSWICK
MIDDLESEX COUNTY
SCALE: 1" = 50'

ARNOLD W. BARNETT
PROFESSIONAL ENGINEER AND LAND SURVEYOR
NEW JERSEY LICENSE NO. 14987

850 SO. WHITE HORSE PIKE
HAMMONTON, NEW JERSEY 08037
COA# 24GA27973300

NEW JERSEY DEPARTMENT OF THE TREASURY
DIVISION OF TAXATION
PROPERTY ADMINISTRATION
APPROVED AS A FEE MAP PURSUANT TO THE AUTHORITY OF
N.J.A.C. 17:27-15 & 16.62-1
FOR THE DIRECTOR, DIVISION OF TAXATION

Thomas S. Reilly, C.T.A.
THOMAS S. REILLY, CHIEF, LOCAL PROPERTY FIELD ASSISTANCE
Santo C. DiDonato, SUPERVISING FIELD REPRESENTATIVE
DATE: FEB 10, 2009 SERIAL NO.: 934