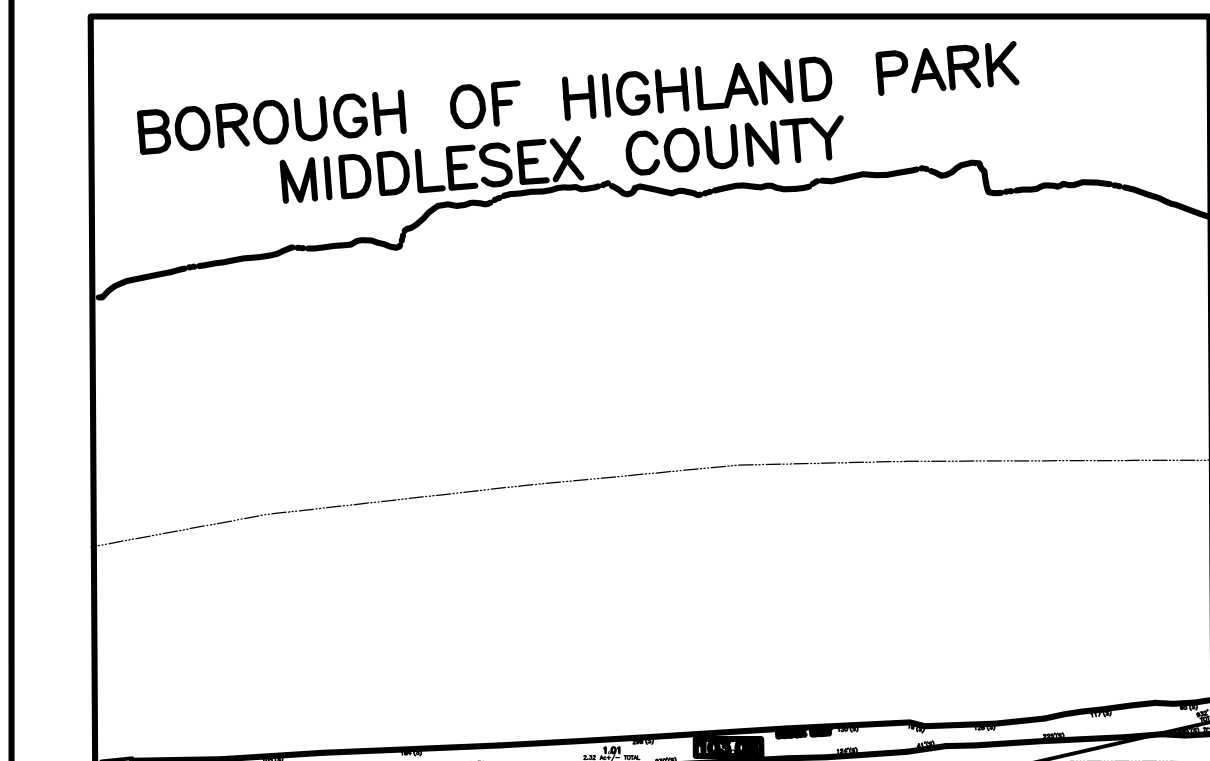


DATE	BY	LIC NO.	BLOCK	LOT
04/20/08	ARNOLD W. BARNETT	14987	103.06	1
06/12/09	MATTHEW ZIOLKOWSKI	4223800	3	15.02
12/20/12	MATTHEW ZIOLKOWSKI	4223800	103.08	1.01
05/14/13	RICHARD A. SCHULZ	37607	3	15.02

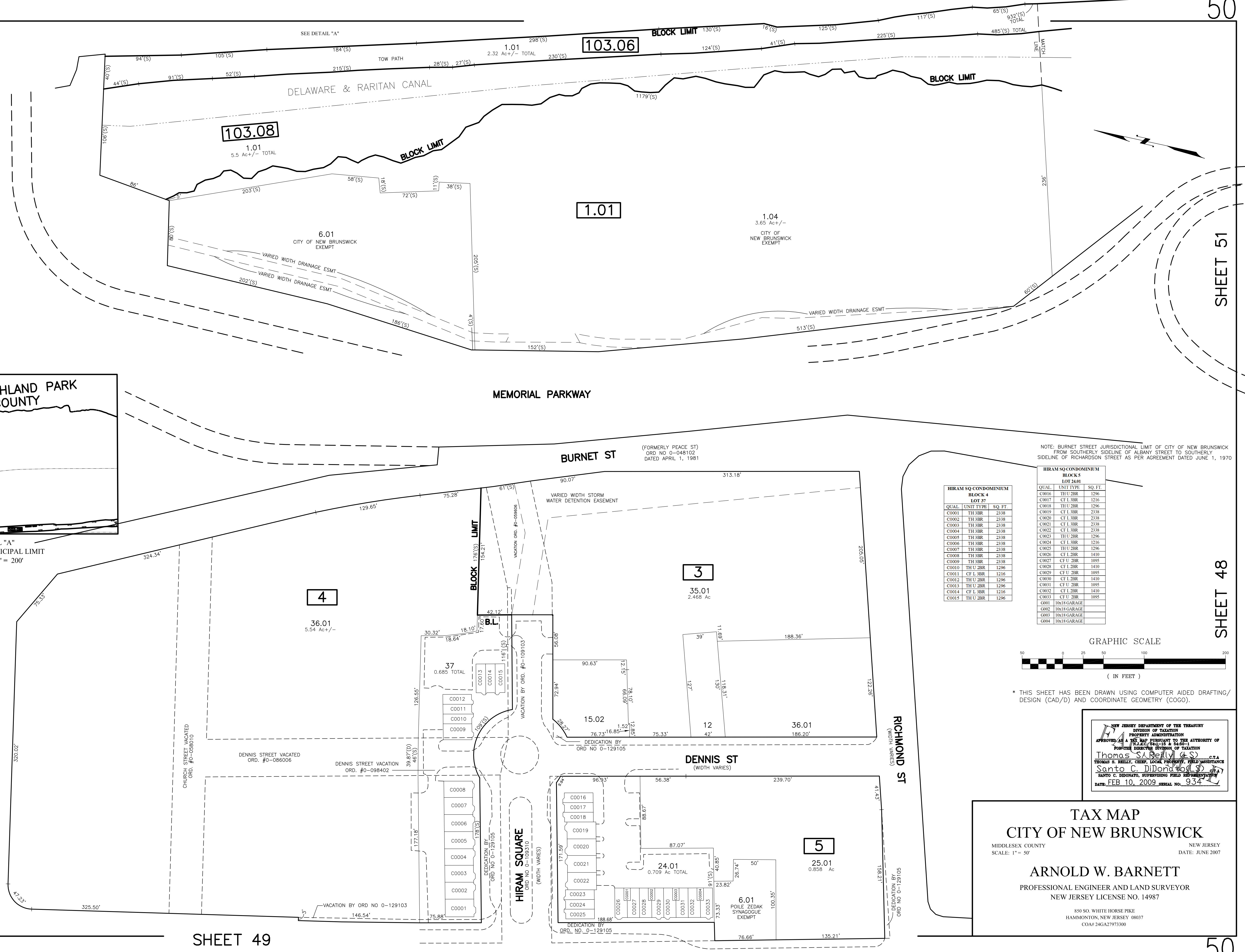
SHEET 39

SHEET 38

SHEET 48

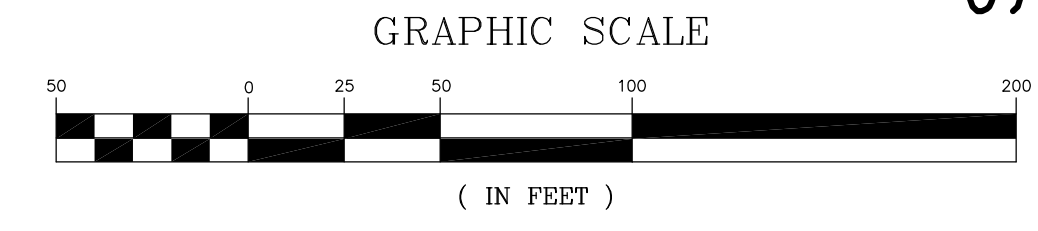


DETAIL "A"
TO SHOW MUNICIPAL LIMIT
SCALE: 1" = 200'



NOTE: BURNET STREET JURISDICTIONAL LIMIT OF CITY OF NEW BRUNSWICK FROM SOUTHERLY SIDELINE OF ALBANY STREET TO SOUTHERLY SIDELINE OF RICHARDSON STREET AS PER AGREEMENT DATED JUNE 1, 1970

HIRAM SQ CONDOMINIUM BLOCK 4 LOT 37			HIRAM SQ CONDOMINIUM BLOCK 5 LOT 2401		
QUAL.	UNIT TYPE	SQ. FT.	QUAL.	UNIT TYPE	SQ. FT.
C0016	TH U 2BR	1296	C0016	TH U 2BR	1296
C0017	CF L 3BR	1216	C0017	CF L 3BR	1216
C0018	TH U 2BR	1296	C0018	TH U 2BR	1296
C0019	CF L 3BR	2338	C0019	CF L 3BR	2338
C0020	TH 3BR	2338	C0020	CF L 3BR	2338
C0021	TH 3BR	2338	C0021	CF L 3BR	2338
C0022	TH 3BR	2338	C0022	CF L 3BR	2338
C0023	TH 3BR	2338	C0023	TH U 2BR	1296
C0024	TH 3BR	2338	C0024	CF L 3BR	1216
C0025	TH 3BR	2338	C0025	TH U 2BR	1296
C0026	TH 3BR	2338	C0026	CF L 2BR	1410
C0027	TH 3BR	2338	C0027	CF U 2BR	1095
C0028	TH 3BR	2338	C0028	CF U 2BR	1410
C0029	TH 3BR	2338	C0029	CF U 2BR	1095
C0030	TH 3BR	2338	C0030	CF U 2BR	1410
C0031	TH 3BR	2338	C0031	CF U 2BR	1095
C0032	TH 3BR	2338	C0032	CF L 2BR	1410
C0033	TH 3BR	2338	C0033	CF L 2BR	1410
C0034	TH 3BR	2338	C0034	CF U 2BR	1095
C0035	TH 3BR	2338	C0035	CF U 2BR	1095
G001	10x18 GARAGE		G001	10x18 GARAGE	
G002	10x18 GARAGE		G002	10x18 GARAGE	
G003	10x18 GARAGE		G003	10x18 GARAGE	
G004	10x18 GARAGE		G004	10x18 GARAGE	



* THIS SHEET HAS BEEN DRAWN USING COMPUTER AIDED DRAFTING/ DESIGN (CAD/D) AND COORDINATE GEOMETRY (COGO).

NEW JERSEY DEPARTMENT OF THE TREASURY
DIVISION OF TAXATION
PROPERTY ADMINISTRATION
APPROVED AS A TAX MAP PURSUANT TO THE AUTHORITY OF PUBLIC LAW 93-502 & 504-1
FOR THE DIRECTOR, DIVISION OF TAXATION
Thomas S. Reilly, C.E.
Thomas S. Reilly, Chief, Local Property, Field Assistance
Santo C. DiDonato, Supervising Field Representative
DATE: FEB. 10, 2009 SERIAL NO. 934

TAX MAP
CITY OF NEW BRUNSWICK
MIDDLESEX COUNTY
SCALE: 1" = 50'

NEW JERSEY
DATE: JUNE 2007

ARNOLD W. BARNETT
PROFESSIONAL ENGINEER AND LAND SURVEYOR
NEW JERSEY LICENSE NO. 14987

850 SO. WHITE HORSE PIKE
HAMMONTON, NEW JERSEY 08037
COA# 24GA27973300