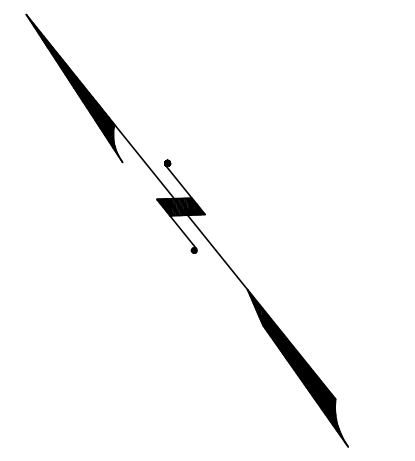


REVISIONS				
DATE	BY	LIC NO	BLOCK	LOT
04/2008	ARNOLD W. BARNETT	14987	54	13.03
10/17/11	MATTHEW ZIOLKOWSKI	4223800	55	2.01
12/2012	MATTHEW ZIOLKOWSKI	4223800	132	30.01
05/13/13	RICHARD A. SCHULZ	37607	140	18.01, 14.01, 34
05/16/13	RICHARD A. SCHULZ	37607	132	8, 10, 12
05/16/13	RICHARD A. SCHULZ	37607	141	31

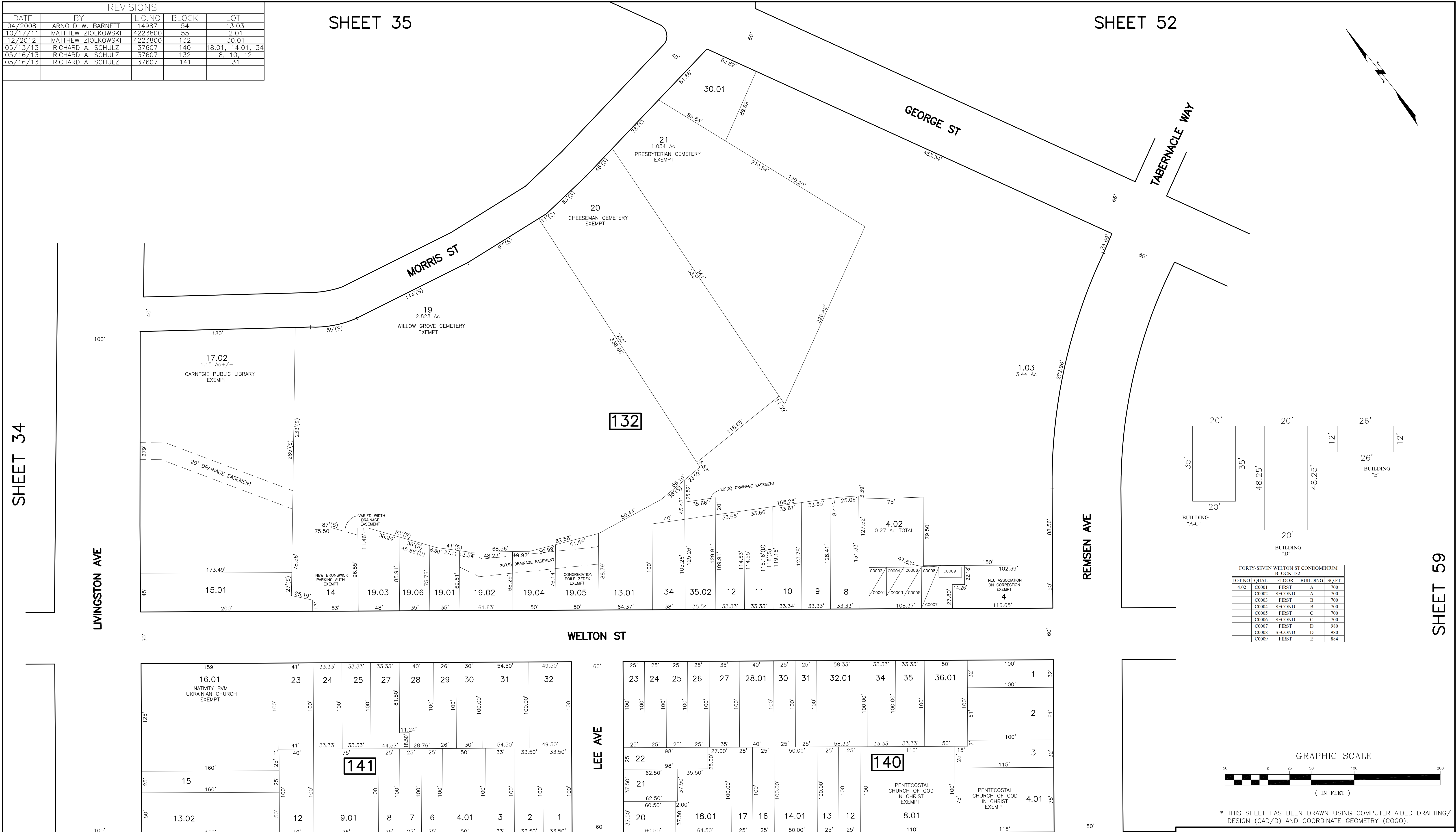
SHEET 35

SHEET 52

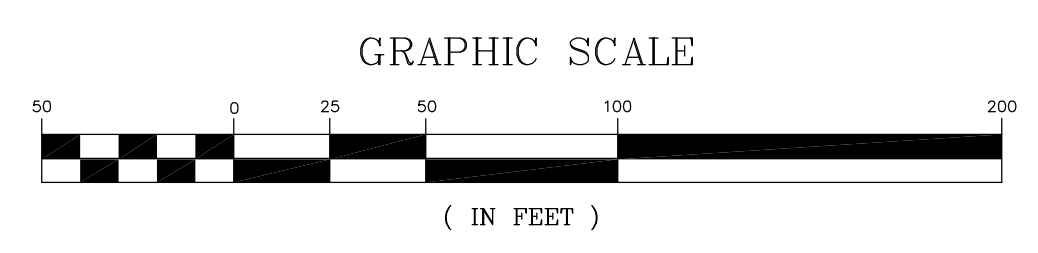


SHEET 34

SHEET 59



FORTY-SEVEN WELTON ST CONDOMINIUM				
BLOCK 132				
LOT NO	QUAL.	FLOOR	BUILDING	SQ.FT.
4.02	C0001	FIRST	A	700
	C0002	SECOND	A	700
	C0003	FIRST	B	700
	C0004	SECOND	B	700
	C0005	FIRST	C	700
	C0006	SECOND	C	700
	C0007	FIRST	D	980
	C0008	SECOND	D	980
	C0009	FIRST	E	884



* THIS SHEET HAS BEEN DRAWN USING COMPUTER AIDED DRAFTING/ DESIGN (CAD/D) AND COORDINATE GEOMETRY (COGO).

TAX MAP
CITY OF NEW BRUNSWICK
 MIDDLESEX COUNTY
 SCALE: 1" = 50'
 NEW JERSEY
 DATE: JUNE 2007

ARNOLD W. BARNETT
 PROFESSIONAL ENGINEER AND LAND SURVEYOR
 NEW JERSEY LICENSE NO. 14987

850 SO. WHITE HORSE PIKE
 HAMMONTON, NEW JERSEY 08037
 COA# 24GA27973300

NEW JERSEY DEPARTMENT OF THE TREASURY
 DIVISION OF TAXATION
 PROPERTY ADMINISTRATION
 APPROVED AS A TAX MAP PURSUANT TO THE AUTHORITY OF
 N.J.A.C. 17:27 & 17:28
 FOR THE DIRECTOR, DIVISION OF TAXATION

Thomas S. Reilly, P.E.
 Thomas S. Reilly, Chief, Local Property Field Assistance
 Santo C. DiDonato, Supervising Field Representative
 DATE: FEB 10, 2009 SERIAL NO.: 934

SHEET 46