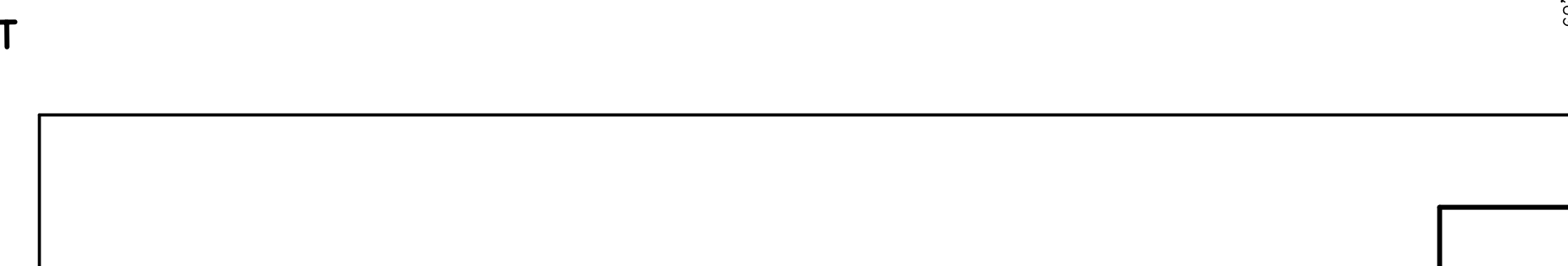
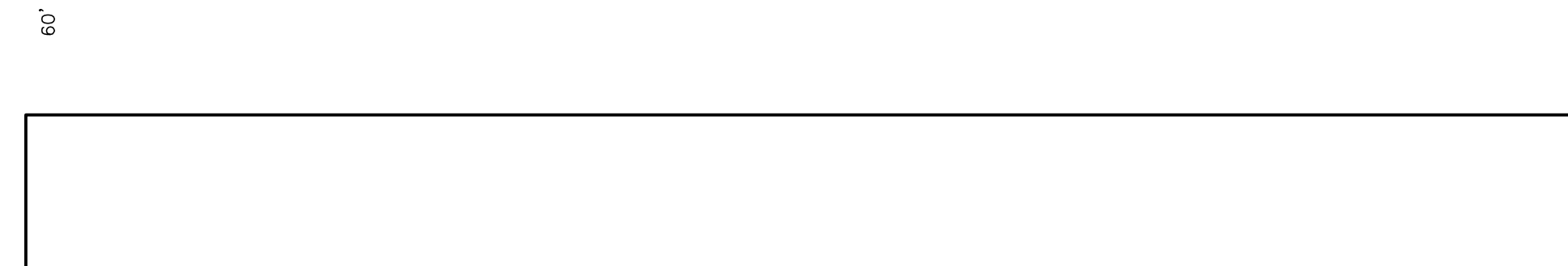
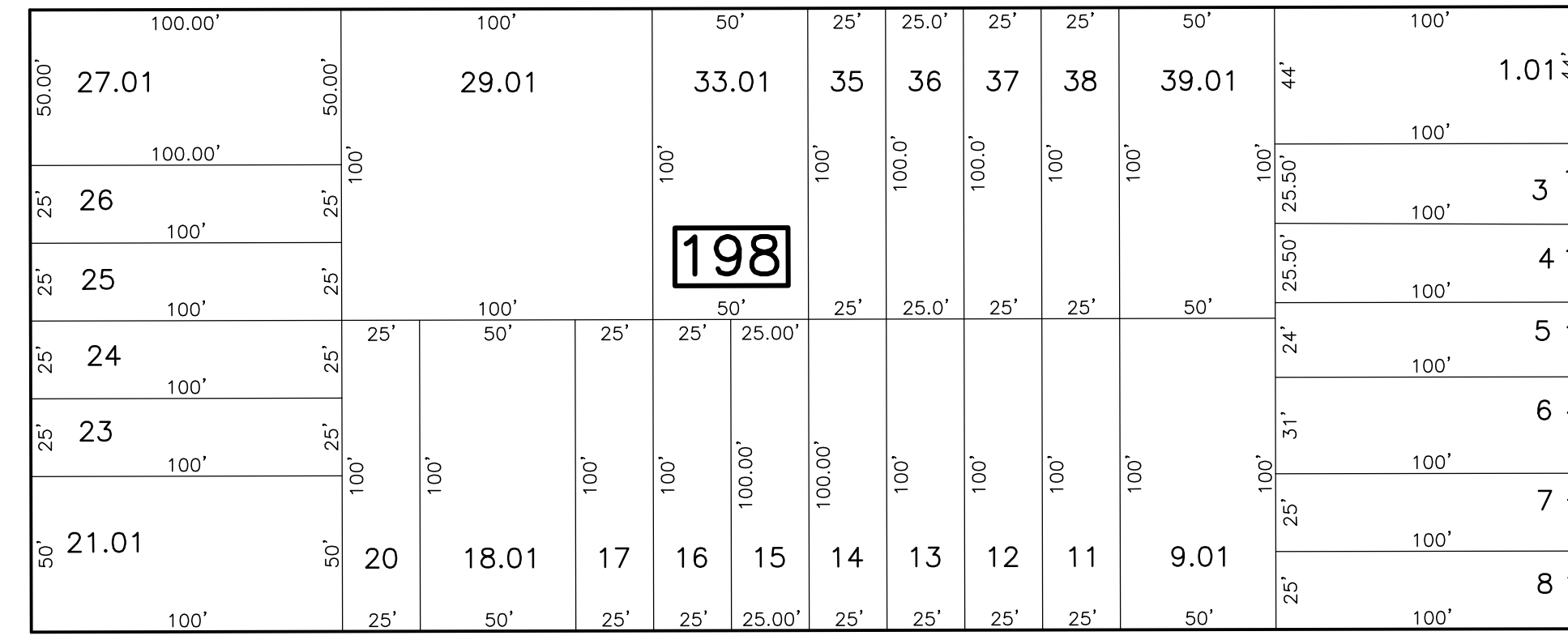
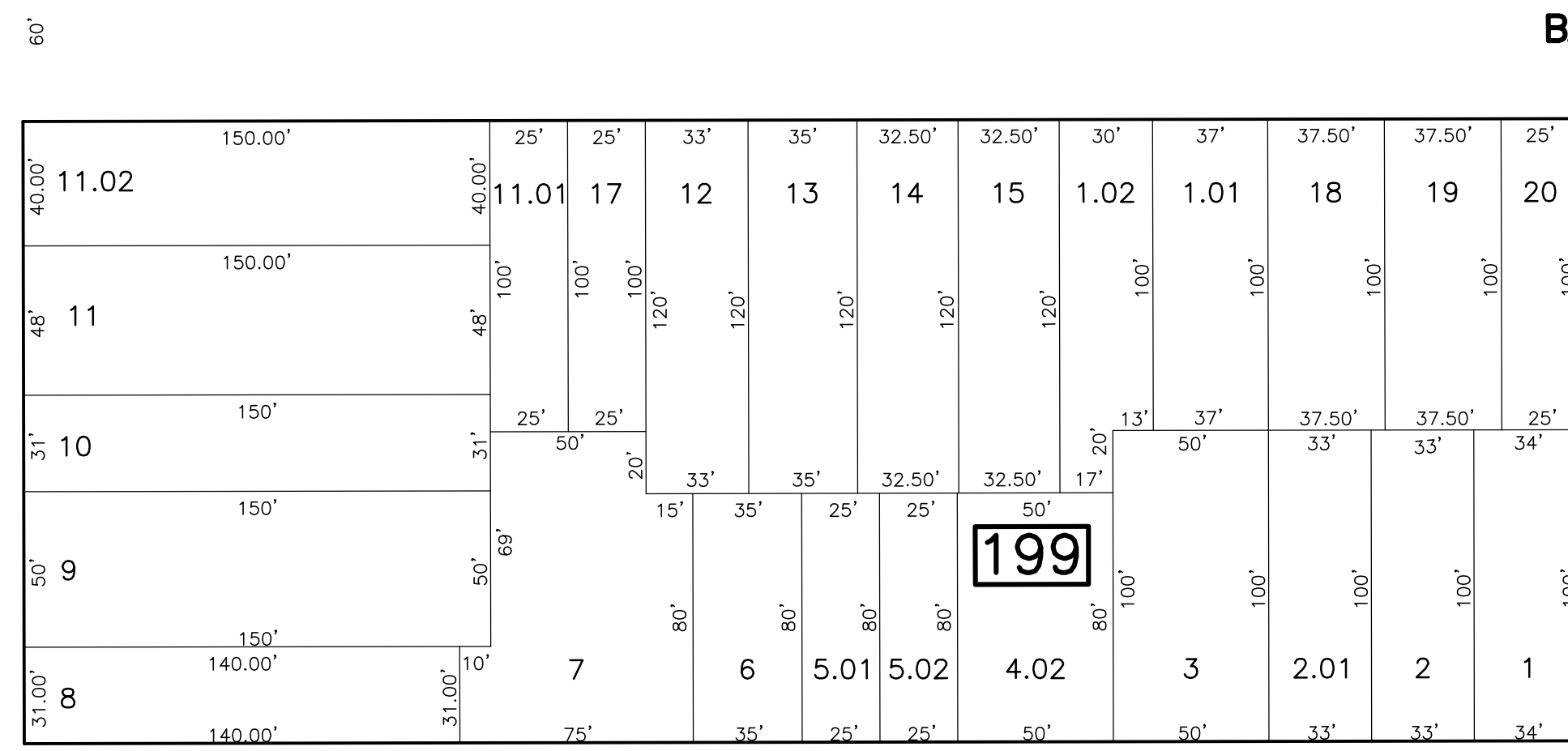
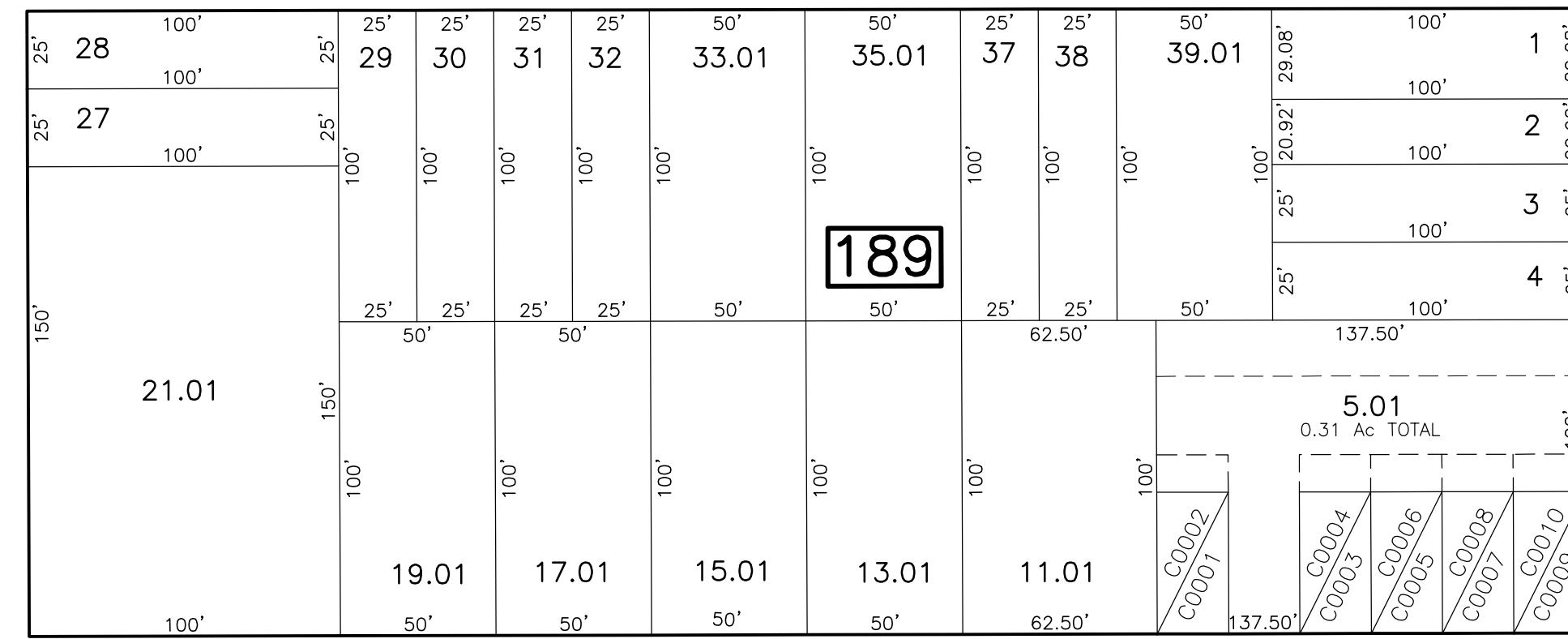
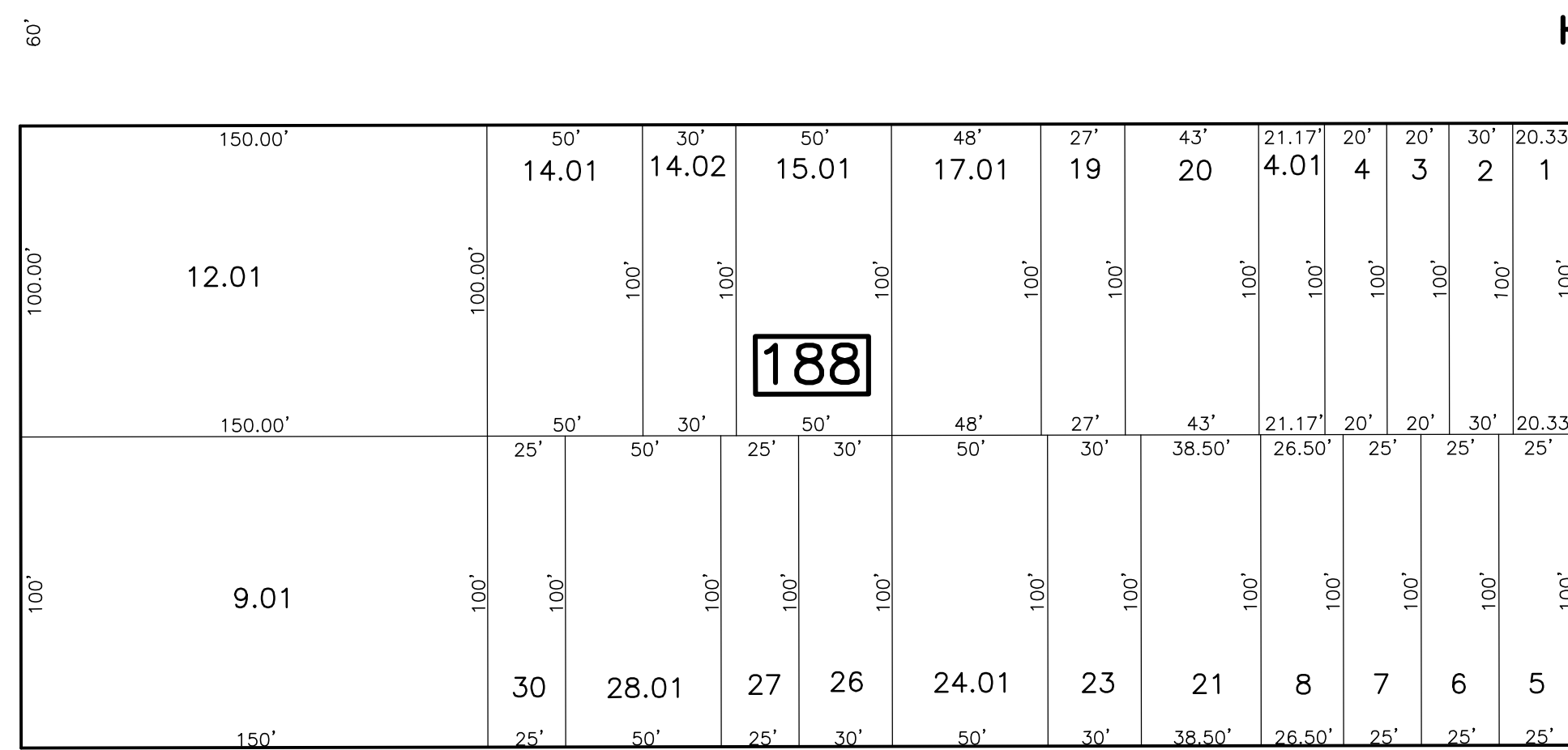
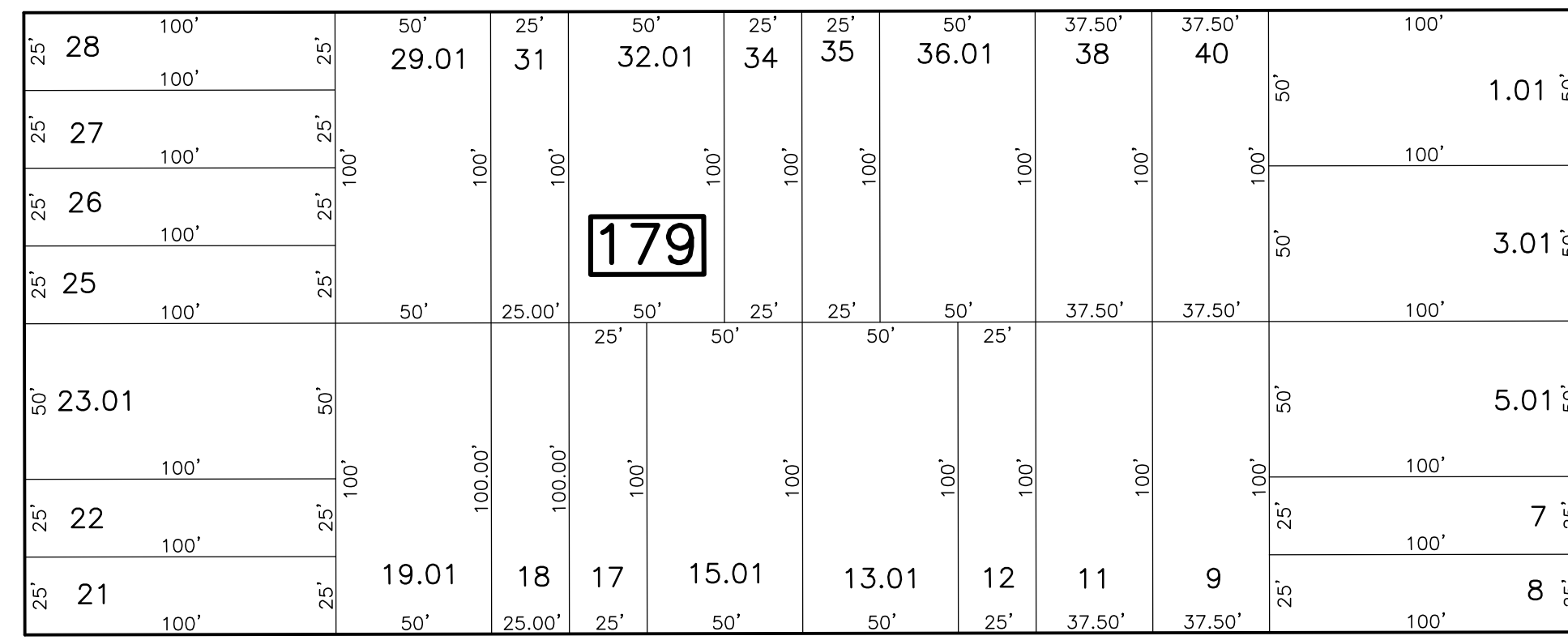
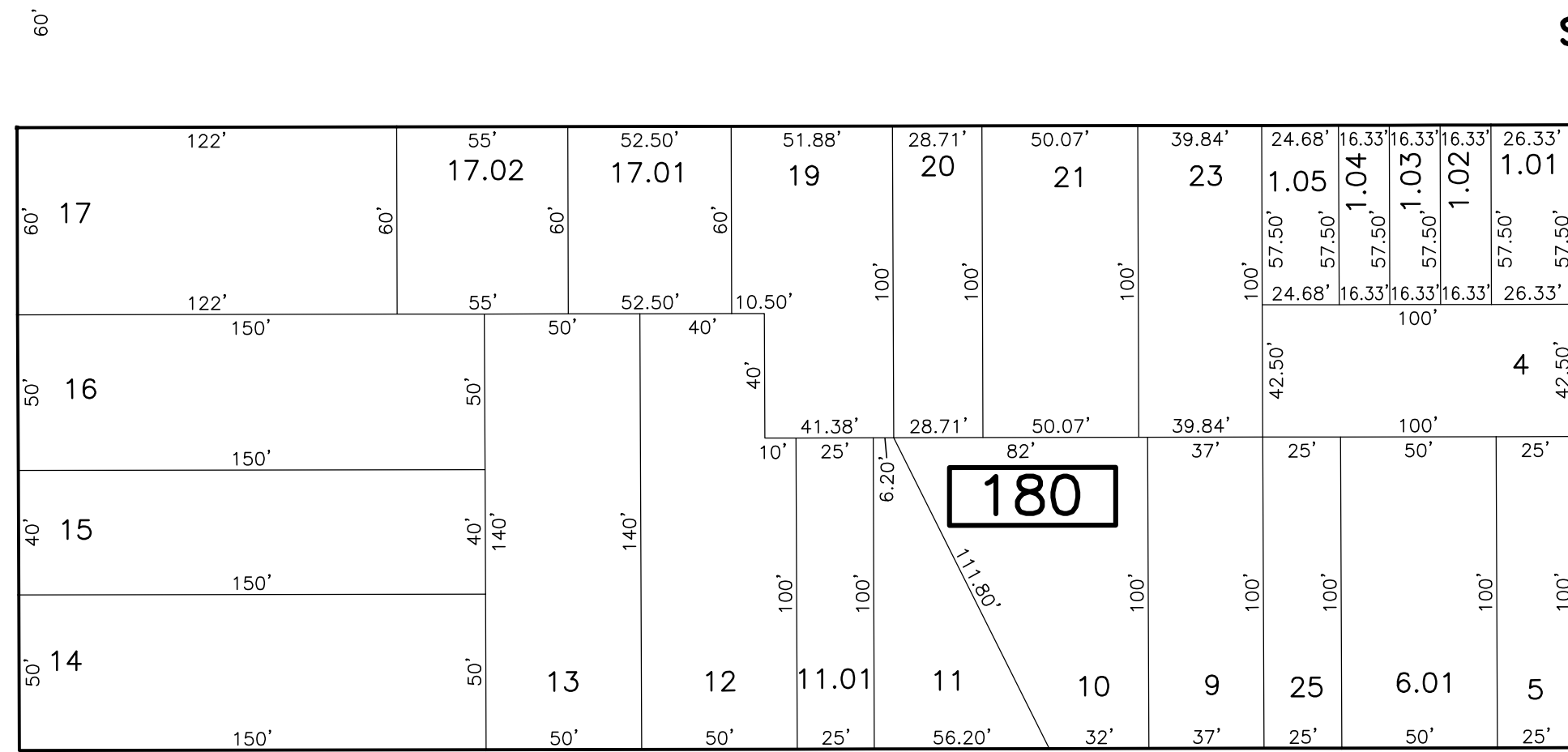
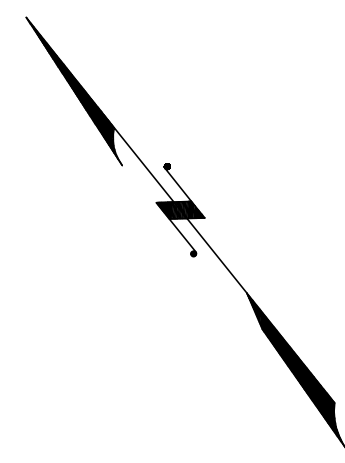


SHEET 46



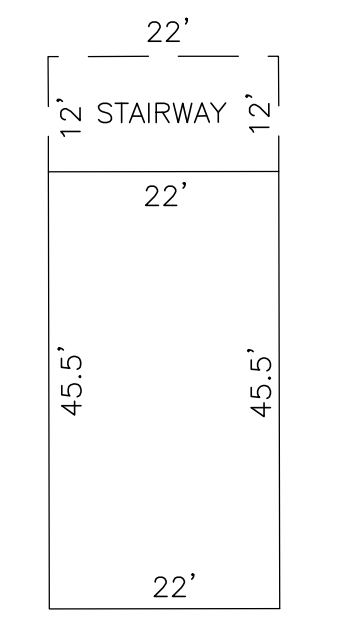
LMINGSTON AVE

LEE ST

REMSEN AVE

SHEET 32

SHEET 57

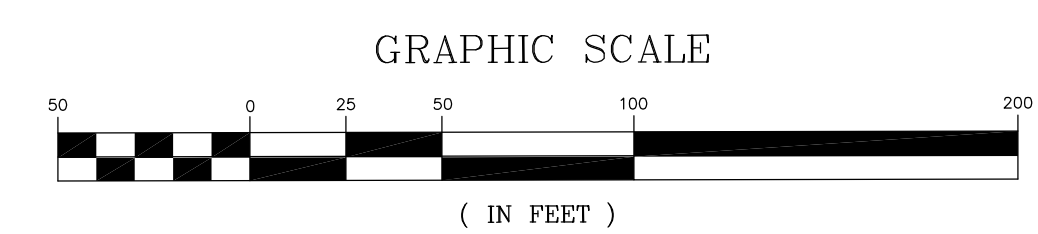


DOUGLASS ESTATES SOUTH CONDO
BLOCK 156 - 30.01

LOT	FLOOR	SQ. FT.
30.02	3S/2BR	1407
30.03	3S/2BR	1407
30.04	3S/2BR	1407
30.05	3S/2BR	1407
30.06	3S/2BR	1407
30.07	3S/2BR	1407
30.08	3S/2BR	1407
30.09	3S/2BR	1407
30.10	3S/2BR	1407
30.11	3S/2BR	1407

REVISIONS

DATE	BY	LIC. NO	BLOCK	LOT
04/2008	ARNOLD W. BARNETT	14987	189	31, 32.01
08/11/08	ARNOLD W. BARNETT	14987	188	5.01
08/11/08	ARNOLD W. BARNETT	14987	189	31.01
05/17/13	RICHARD A. SCHULZ	37607	179	18
05/17/13	RICHARD A. SCHULZ	37607	188	12.01
05/17/13	RICHARD A. SCHULZ	37607	198	15, 27.01, 36
05/20/13	RICHARD A. SCHULZ	37607	199	8, 11.02



NEW JERSEY DEPARTMENT OF THE TREASURY
DIVISION OF TAXATION
PROPERTY ADMINISTRATION
APPROVED AS A PLAN PURSUANT TO THE AUTHORITY OF
N.J.A.C. 17:27-18 & 18.62-1
FOR THE DIRECTOR, DIVISION OF TAXATION
Thomas S. Reilly (S) C.T.A.
THOMAS S. REILLY, CHIEF, LOCAL PROPERTY TAX ASSISTANCE
Santo C. DiDonato (S) C.T.A.
SANTO C. DIDONATO, SUPERVISING FIELD REPRESENTATIVE
DATE: FEB 10, 2009 SERIAL NO.: 934

TAX MAP
CITY OF NEW BRUNSWICK
MIDDLESEX COUNTY
SCALE: 1" = 50'
NEW JERSEY
DATE: JUNE 2007
ARNOLD W. BARNETT
PROFESSIONAL ENGINEER AND LAND SURVEYOR
NEW JERSEY LICENSE NO. 14987
850 SO. WHITE HORSE PIKE
HAMMONTON, NEW JERSEY 08037
COA# 24GA27973300

* THIS SHEET HAS BEEN DRAWN USING COMPUTER AIDED DRAFTING/DESIGN (CAD/D) AND COORDINATE GEOMETRY (COGO).