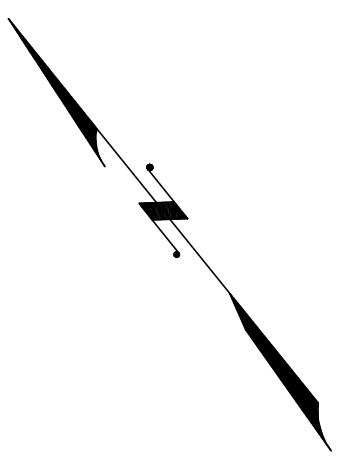
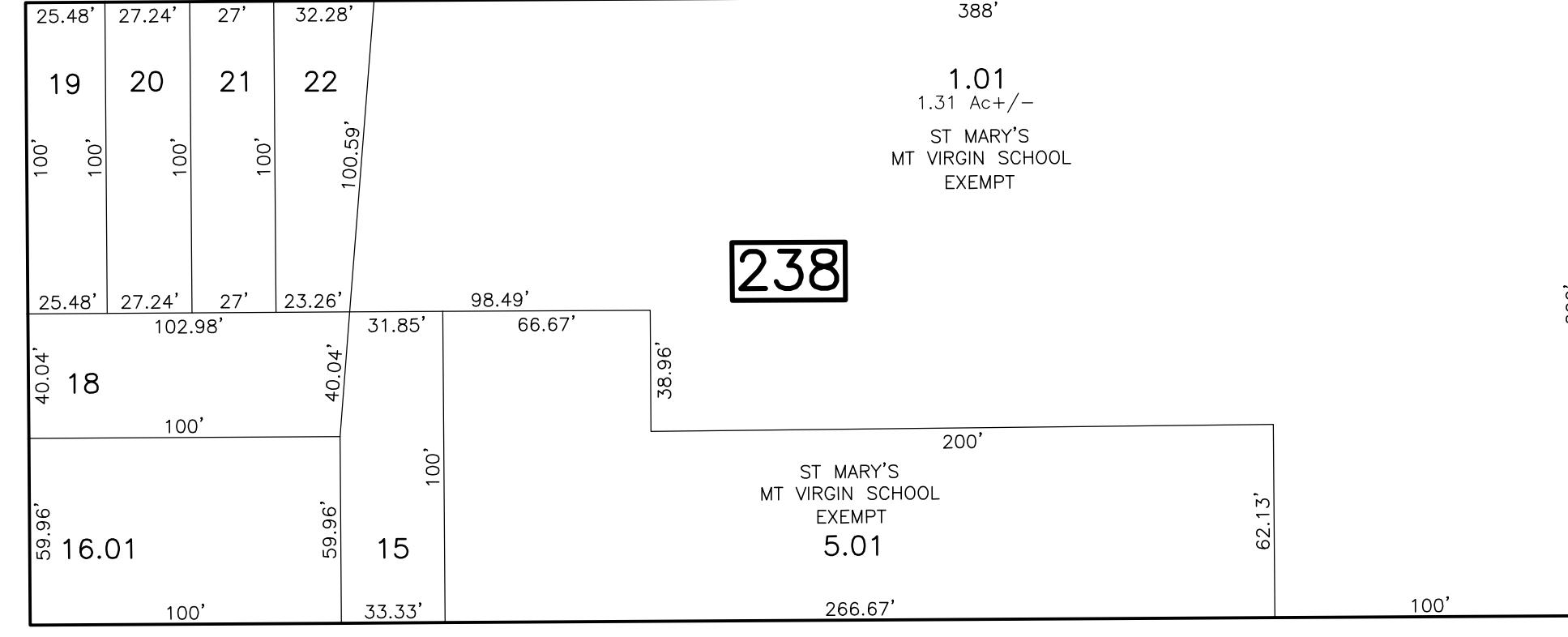
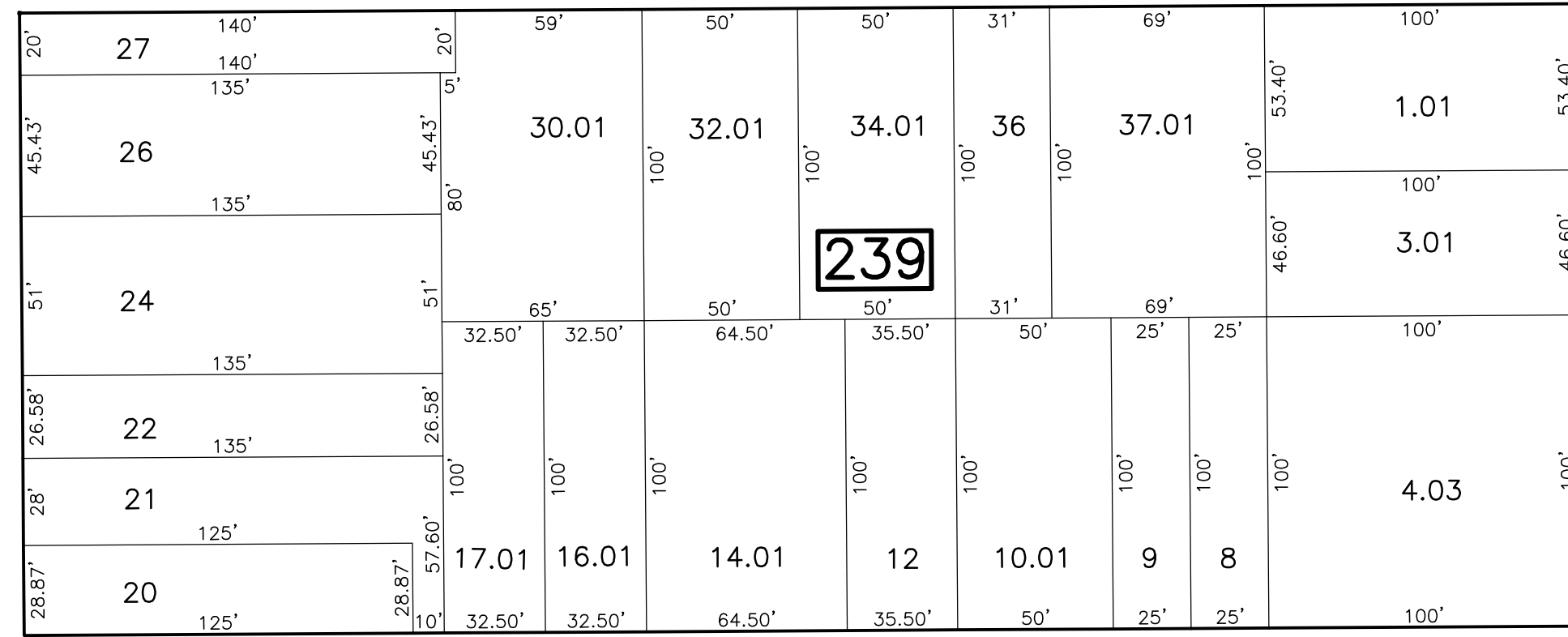


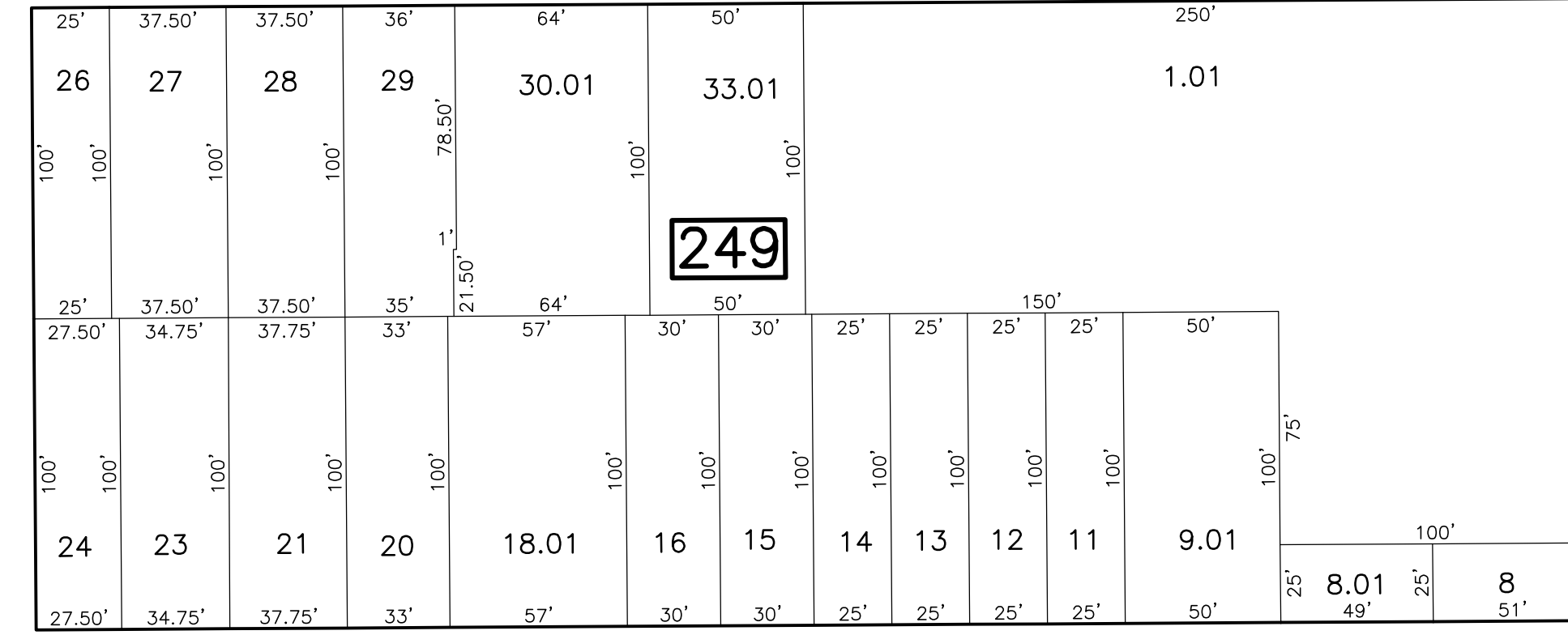
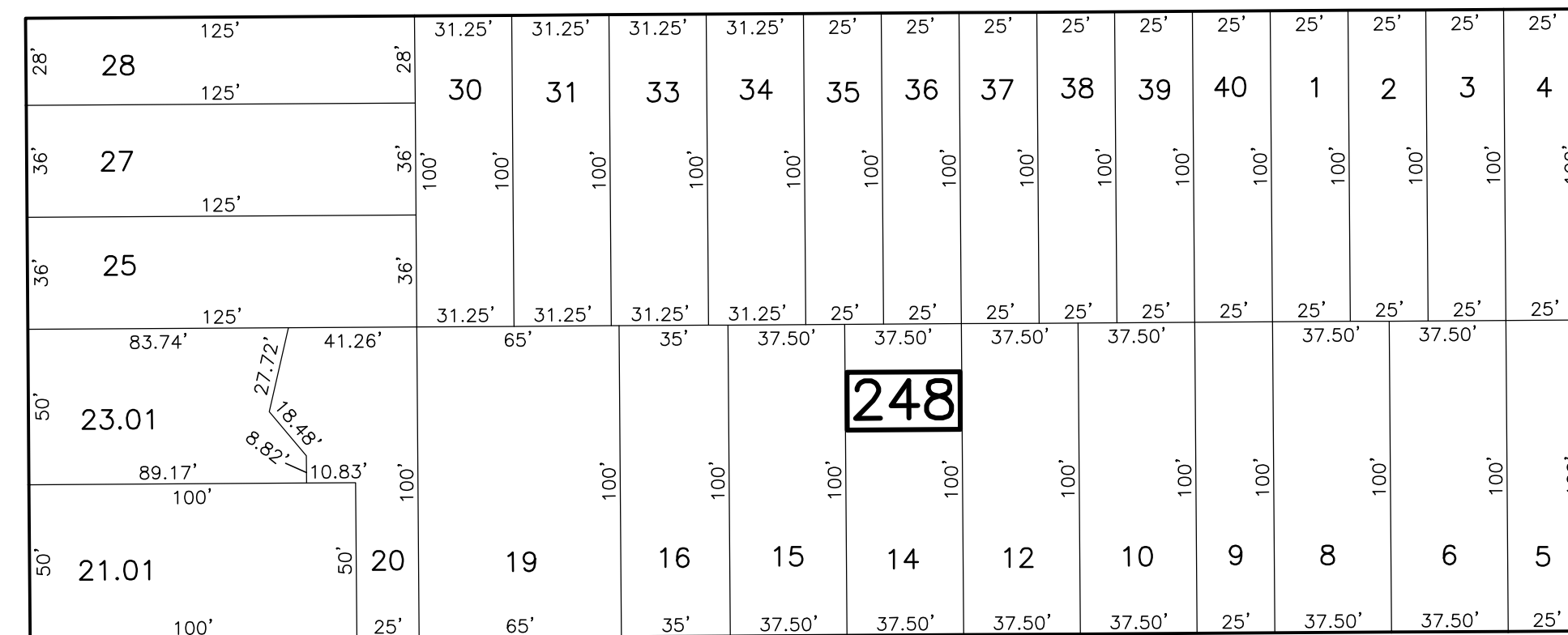
SHEET 44



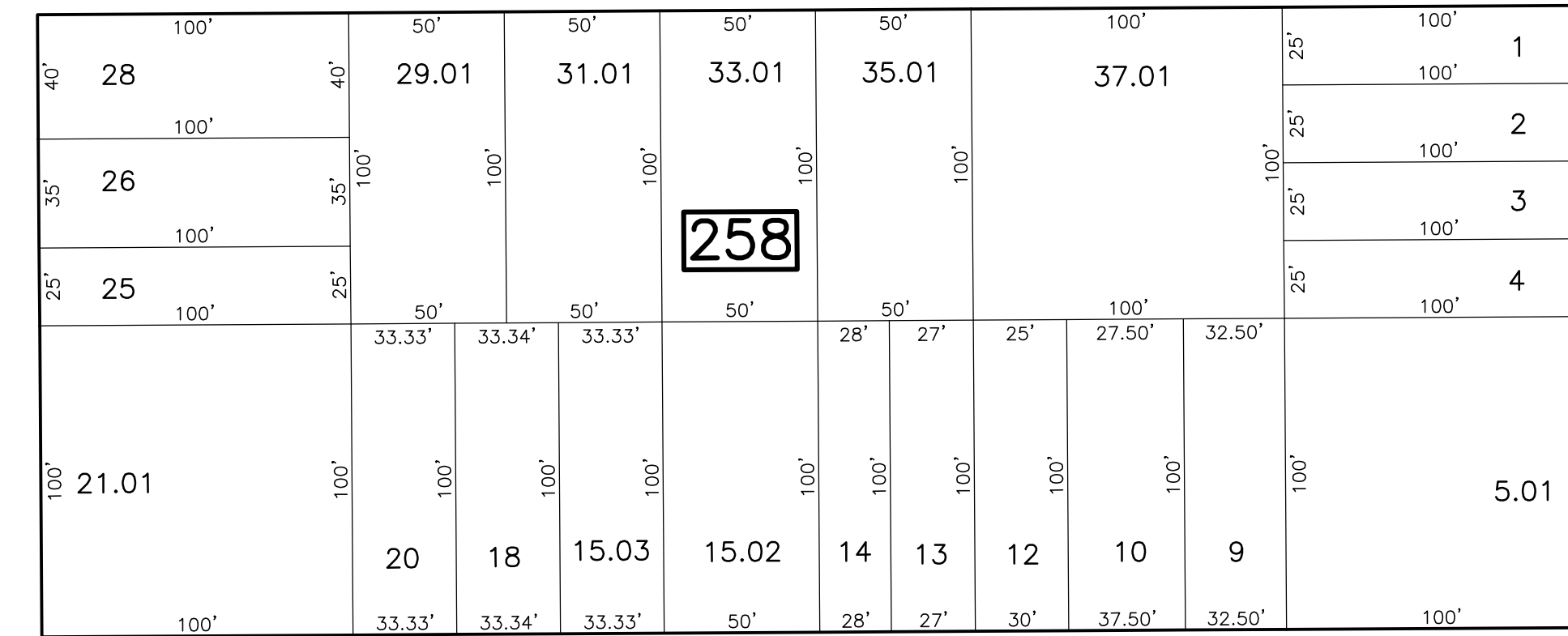
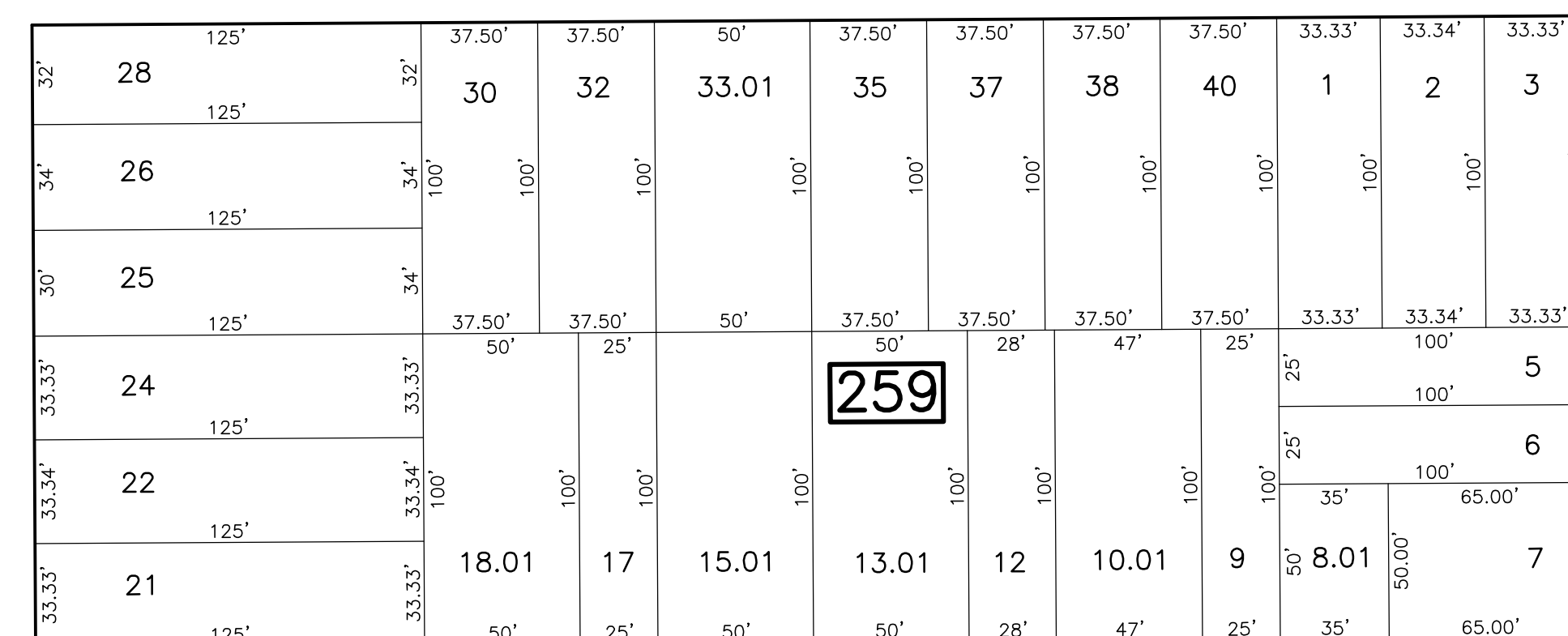
SANDFORD ST



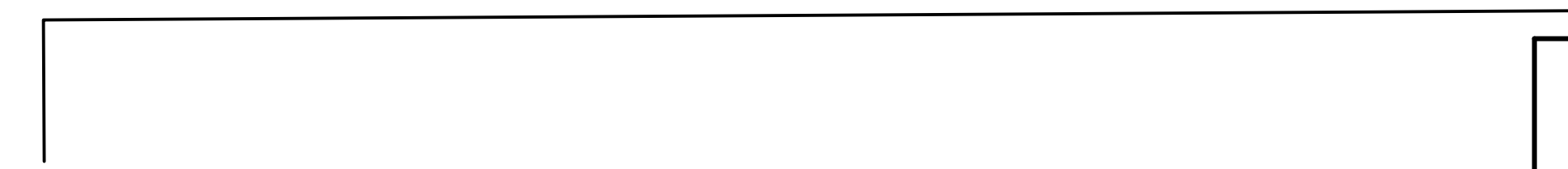
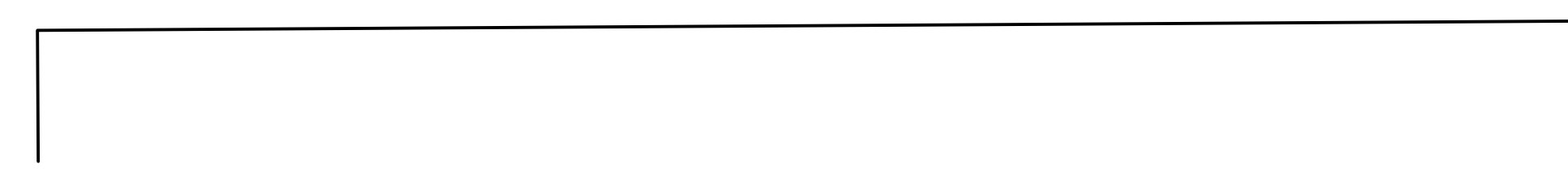
POWERS ST



HOWARD ST



TALMADGE ST



SHEET 30

LIVINGSTON AVE

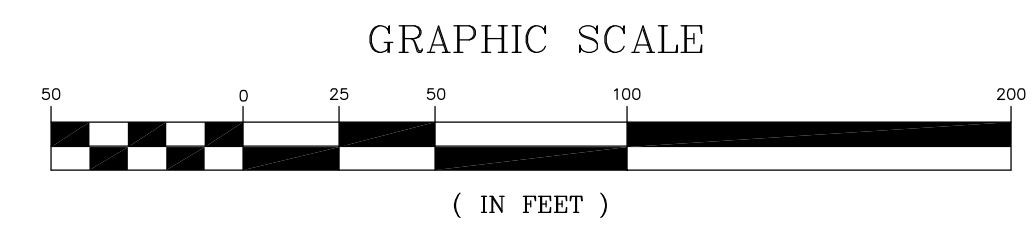
LEE AVE

REMSEN AVE

SHEET 55

REVISIONS				
DATE	BY	LIC. NO	BLOCK	LOT
04/2008	ARNOLD W. BARNETT	14987	259	17, 01
05/21/13	RICHARD A. SCHULZ	37607	259	7, 25

SHEET 42



* THIS SHEET HAS BEEN DRAWN USING COMPUTER AIDED DRAFTING/ DESIGN (CAD/D) AND COORDINATE GEOMETRY (COGO).

NEW JERSEY DEPARTMENT OF THE TREASURY
DIVISION OF TAXATION
PROPERTY ADMINISTRATION
APPROVED AS A PER MEE PURSUANT TO THE AUTHORITY OF
N.J.A.C. 17:27 & 17:28
FOR THE DIRECTOR, DIVISION OF TAXATION
Thomas S. Reilly, C.S.
THOMAS S. REILLY, CHIEF, LOCAL PROPERTY FIELD ASSISTANCE
Santo C. DiDonato, SUPERVISING FIELD REPRESENTATIVE
DATE: FEB 10, 2009 SERIAL NO. 934

TAX MAP
CITY OF NEW BRUNSWICK
MIDDLESEX COUNTY
SCALE: 1" = 50'
NEW JERSEY
DATE: JUNE 2007
ARNOLD W. BARNETT
PROFESSIONAL ENGINEER AND LAND SURVEYOR
NEW JERSEY LICENSE NO. 14987
850 SO. WHITE HORSE PIKE
HAMMONTON, NEW JERSEY 08037
COA# 24GA27973300