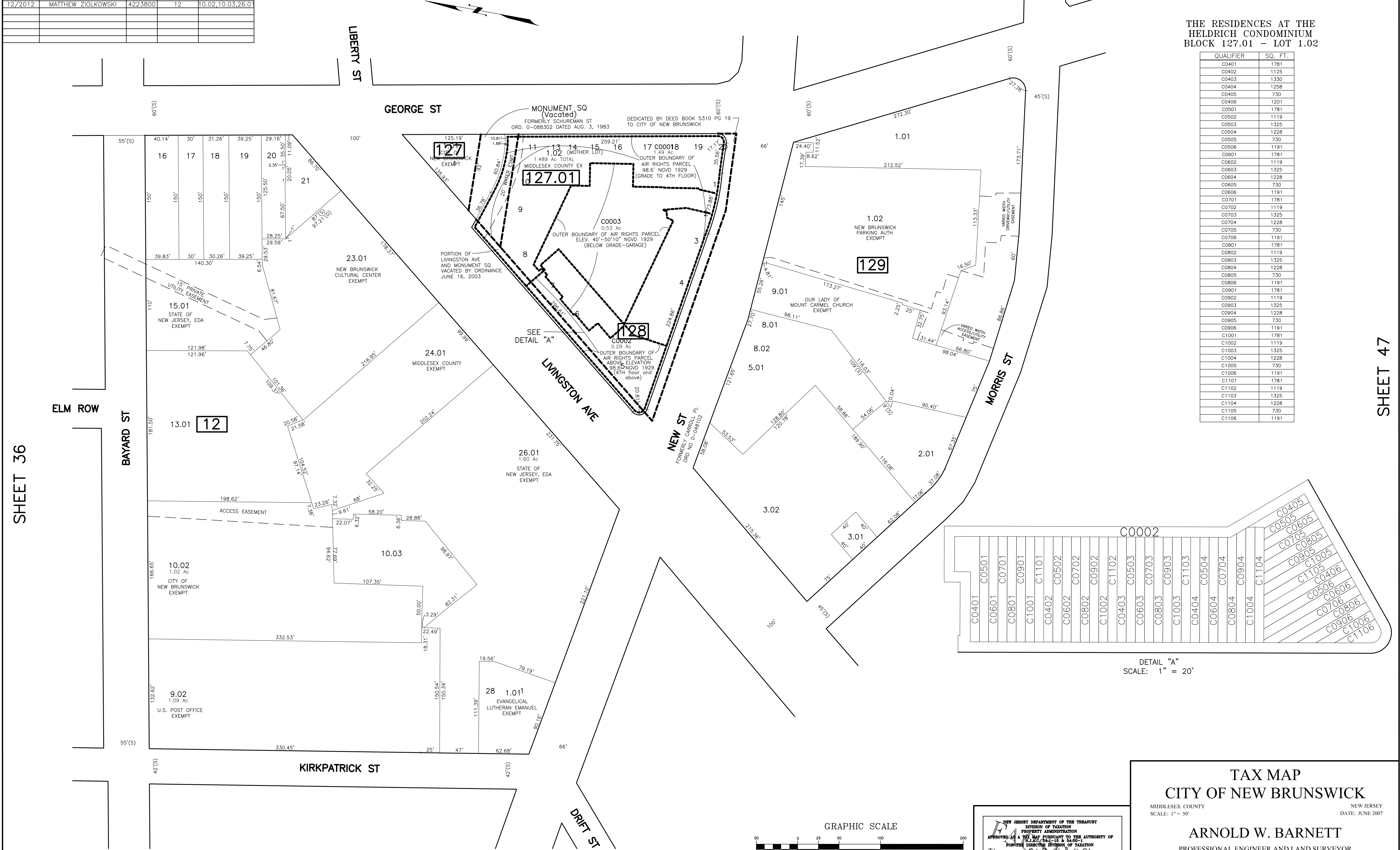


REVISIONS				
DATE	BY	LIC NO	BLOCK	LOT
04/2008	ARNOLD W. BARNETT	14987	129	5.01, 8.01, 8.02
04/2008	ARNOLD W. BARNETT	14987	35	1, 28
12/2012	MATTHEW ZIOLKOWSKI	4223800	12	10.02, 10.03, 26.01

SHEET 49

SHEET 48

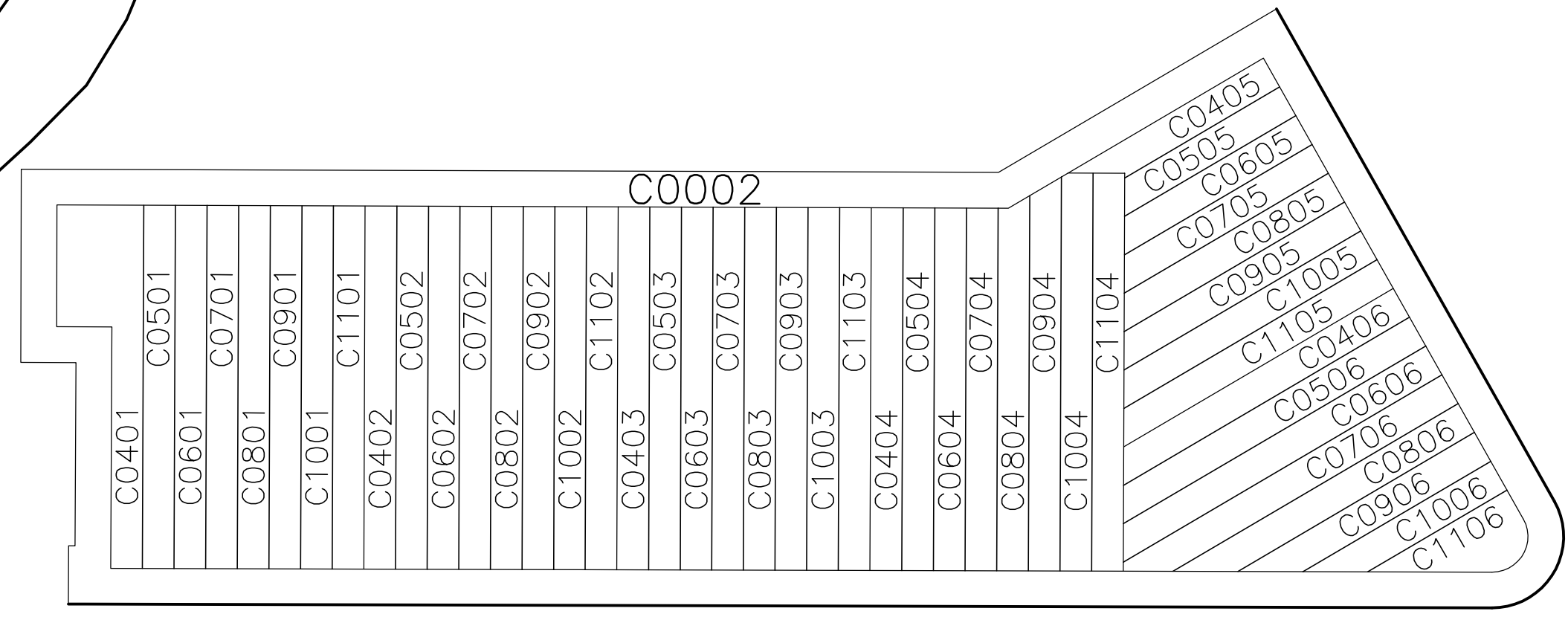


THE RESIDENCES AT THE HELDRICH CONDOMINIUM
BLOCK 127.01 - LOT 1.02

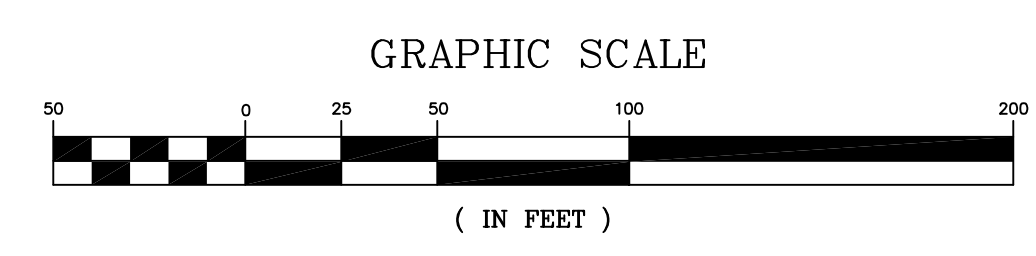
QUALIFIER	SQ. FT.
C0401	1781
C0402	1125
C0403	1330
C0404	1258
C0405	730
C0406	1201
C0501	1781
C0502	1119
C0503	1325
C0504	1228
C0505	730
C0506	1191
C0601	1781
C0602	1119
C0603	1325
C0604	1228
C0605	730
C0606	1191
C0701	1781
C0702	1119
C0703	1325
C0704	1228
C0705	730
C0706	1191
C0801	1781
C0802	1119
C0803	1325
C0804	1228
C0805	730
C0806	1191
C0901	1781
C0902	1119
C0903	1325
C0904	1228
C0905	730
C0906	1191
C1001	1781
C1002	1119
C1003	1325
C1004	1228
C1005	730
C1006	1191
C1101	1781
C1102	1119
C1103	1325
C1104	1228
C1105	730
C1106	1191

SHEET 47

SHEET 36



DETAIL "A"
SCALE: 1" = 20'



SHEET 34

* THIS SHEET HAS BEEN DRAWN USING COMPUTER AIDED DRAFTING/
DESIGN (CAD/D) AND COORDINATE GEOMETRY (COGO).

NEW JERSEY DEPARTMENT OF THE TREASURY
DIVISION OF TAXATION
PROPERTY ADMINISTRATION
APPROVED AS A TAX MAP PURSUANT TO THE AUTHORITY OF
N.J.A.C. 17:27-18 & 17:27-19
FOR THE DIRECTOR, DIVISION OF TAXATION
Thomas S. Reilly C.T.A.
THOMAS S. REILLY, CHIEF, LOCAL PROPERTY FIELD ASSISTANCE
Santo C. DiDonato C.T.A.
SANTO C. DIDONATO, SUPERVISING FIELD REPRESENTATIVE
DATE: FEB 10, 2009 SERIAL NO. 934

TAX MAP
CITY OF NEW BRUNSWICK
MIDDLESEX COUNTY NEW JERSEY
SCALE: 1" = 50' DATE: JUNE 2007
ARNOLD W. BARNETT
PROFESSIONAL ENGINEER AND LAND SURVEYOR
NEW JERSEY LICENSE NO. 14987
850 SO. WHITE HORSE PIKE
HAMMONTON, NEW JERSEY 08037
COA# 24GA27973300