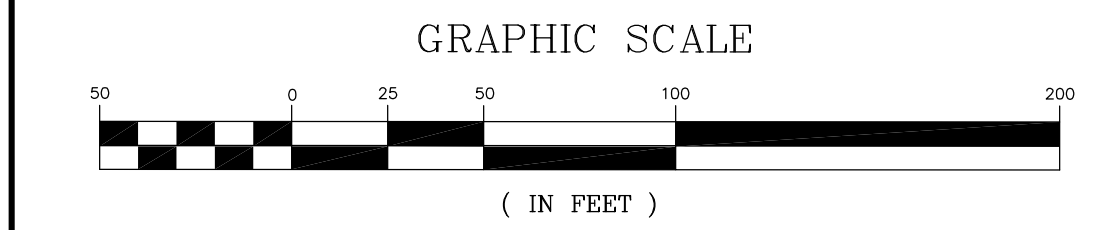
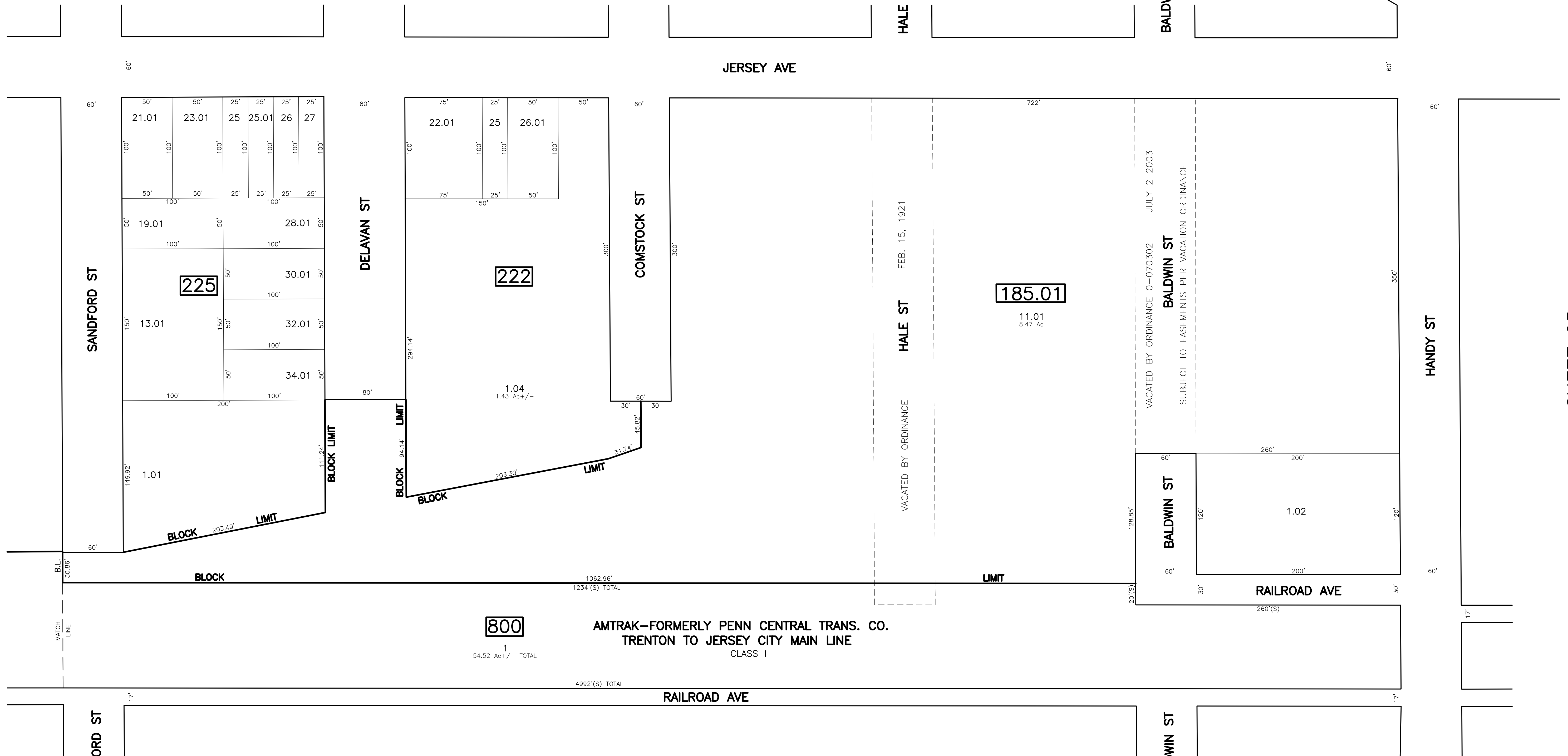
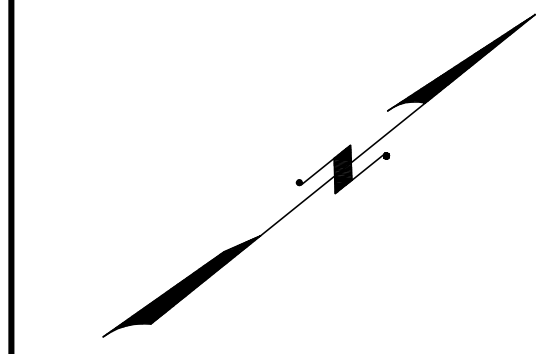


SHEET 23

SHEET 26

SHEET 25



REVISIONS				
DATE	BY	LIC. NO	BLOCK	LOT
05/20/13	RICHARD A. SCHULZ	37607	225	34.01

SHEET 31

SHEET 32

TAX MAP  
CITY OF NEW BRUNSWICK

MIDDLESEX COUNTY NEW JERSEY  
SCALE: 1" = 50' DATE: JUNE 2007

**ARNOLD W. BARNETT**  
PROFESSIONAL ENGINEER AND LAND SURVEYOR  
NEW JERSEY LICENSE NO. 14987

850 SO. WHITE HORSE PIKE  
HAMMONTON, NEW JERSEY 08037  
COA# 24GA27973300

NEW JERSEY DEPARTMENT OF THE TREASURY  
DIVISION OF TAXATION  
PROPERTY ADMINISTRATION  
APPROVED AS A FIELD REPRESENTATIVE TO THE AUTHORITY OF  
N.J.A.C. 17:27-15 & 16.62-1  
FOR THE DIRECTOR, DIVISION OF TAXATION  
**Thomas S. Reilly** C.T.A.  
THOMAS S. REILLY, CHIEF, LOCAL PROPERTY FIELD ASSISTANCE  
**Santo C. DiDonato** C.T.A.  
SANTO C. DIDONATO, SUPERVISING FIELD REPRESENTATIVE  
DATE: FEB 10, 2009 SERIAL NO. 934

\* THIS SHEET HAS BEEN DRAWN USING COMPUTER AIDED DRAFTING/ DESIGN (CAD/D) AND COORDINATE GEOMETRY (COGO).