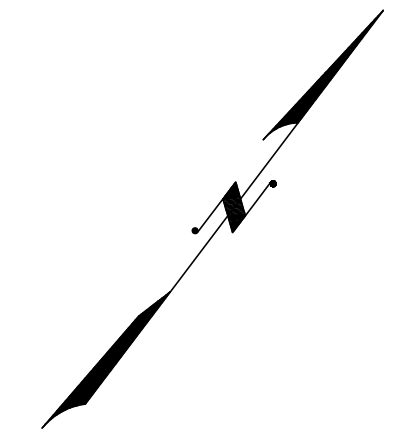
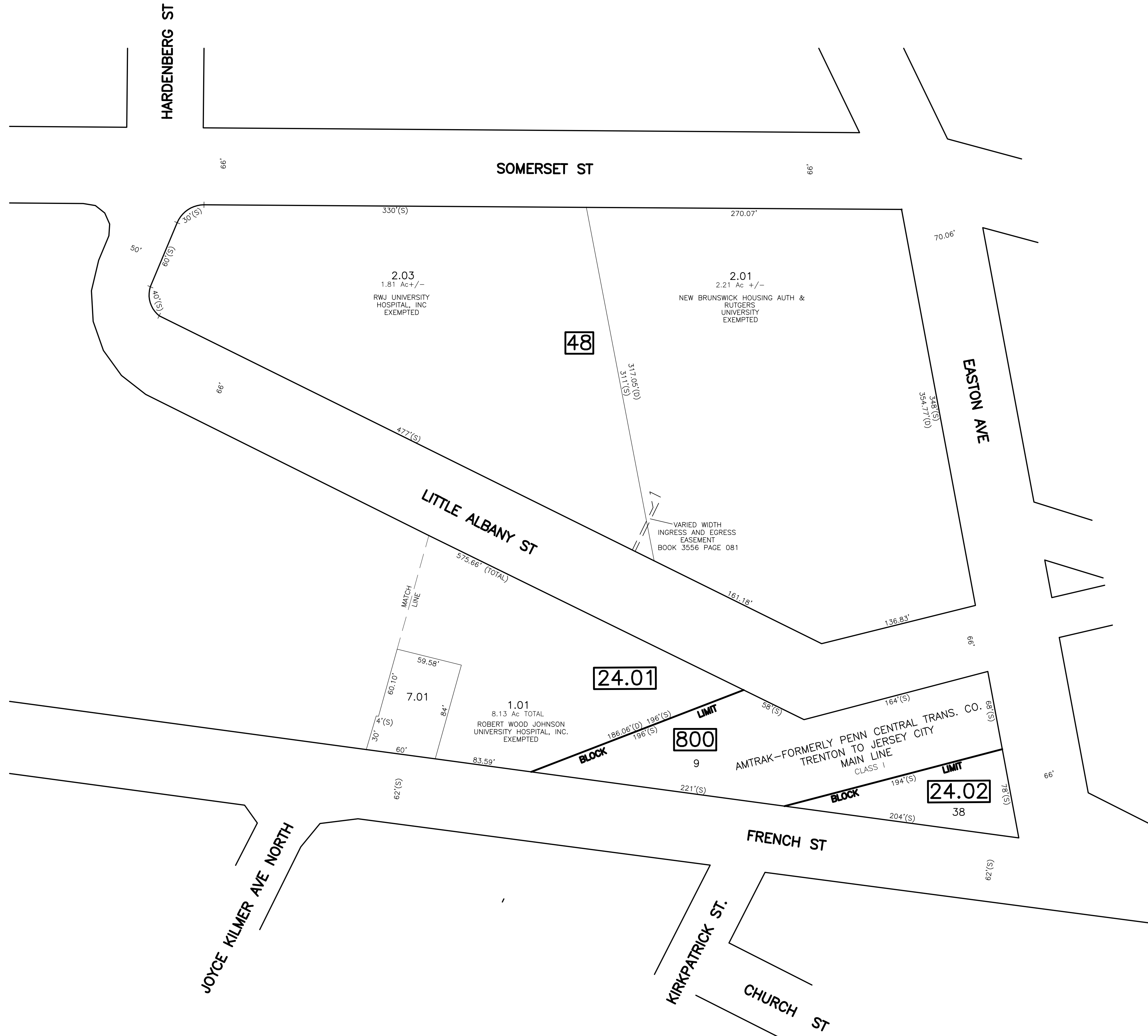


SHEET 18

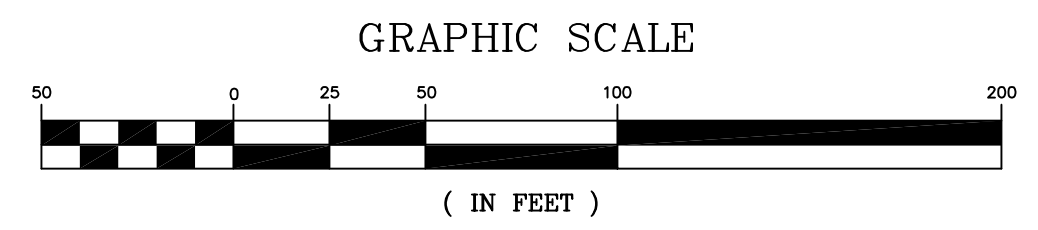
REVISIONS				
DATE	BY	LIC. NO.	BLOCK	LOT
10/18/14	RICHARD A. SCHULZ	37607		KIRKPATRICK ST.



SHEET 21

SHEET 37

SHEET 34



* THIS SHEET HAS BEEN DRAWN USING COMPUTER AIDED DRAFTING/ DESIGN (CAD/D) AND COORDINATE GEOMETRY (COGO).

TAX MAP
CITY OF NEW BRUNSWICK

MIDDLESEX COUNTY NEW JERSEY
 SCALE: 1" = 50' DATE: JUNE 2007

ARNOLD W. BARNETT
 PROFESSIONAL ENGINEER AND LAND SURVEYOR
 NEW JERSEY LICENSE NO. 14987

850 SO. WHITE HORSE PIKE
 HAMMONTON, NEW JERSEY 08037
 COA# 24GA27973300

NEW JERSEY DEPARTMENT OF THE TREASURY
 DIVISION OF TAXATION
 PROPERTY ADMINISTRATION
 APPROVED AS A SEE MAP PURSUANT TO THE AUTHORITY OF
 N.J.A.C. 17:27-15 & 17:27-16
 FOR THE DIRECTOR, DIVISION OF TAXATION
Thomas S. Reilly, C.S.
 THOMAS S. REILLY, CHIEF, LOCAL PROPERTY FIELD ASSISTANCE
Santo C. DiDonato, C.S.
 SANTO C. DIDONATO, SUPERVISING FIELD REPRESENTATIVE
 DATE: FEB 10, 2009 SERIAL NO.: 934

SHEET 36