

REVISIONS				
DATE	BY	LIC. NO.	BLOCK	LOT
12/30/09	MATTHEW ZIOLKOWSKI	4223800	425	5.03

SOMERSET COUNTY
FRANKLIN TOWNSHIP

SOMERSET ST

FRENCH ST

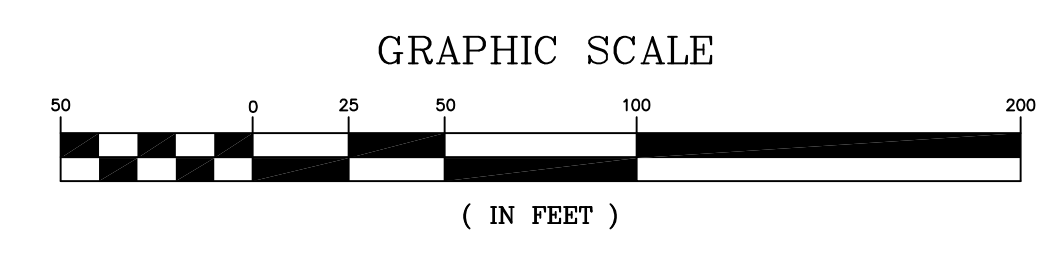
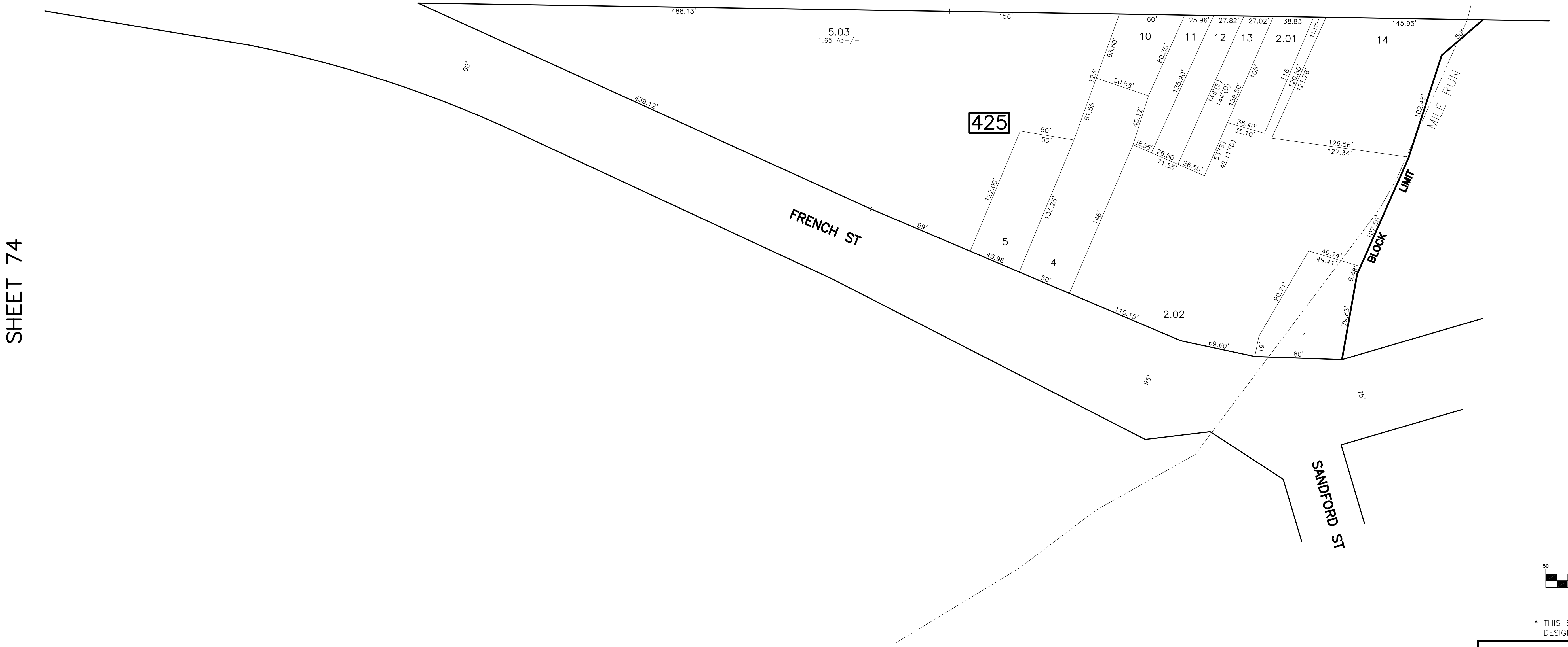
SANDFORD ST

425

SHEET 74

SHEET 15

SHEET 23



* THIS SHEET HAS BEEN DRAWN USING COMPUTER AIDED DRAFTING/ DESIGN (CAD/D) AND COORDINATE GEOMETRY (COGO).

TAX MAP
CITY OF NEW BRUNSWICK

MIDDLESEX COUNTY NEW JERSEY
SCALE: 1" = 50' DATE: JUNE 2007

ARNOLD W. BARNETT
PROFESSIONAL ENGINEER AND LAND SURVEYOR
NEW JERSEY LICENSE NO. 14987

850 SO. WHITE HORSE PIKE
HAMMONTON, NEW JERSEY 08037
COA# 24GA27973300

NEW JERSEY DEPARTMENT OF THE TREASURY
DIVISION OF TAXATION
PROPERTY ADMINISTRATION
APPROVED AS A SEE MAP PURSUANT TO THE AUTHORITY OF
N.J.A.C. 17:27-15 & 17:27-16
FOR THE DIRECTOR, DIVISION OF TAXATION
Thomas S. Reilly, C.S.
THOMAS S. REILLY, CHIEF, LOCAL PROPERTY FIELD ASSISTANCE
Santo C. DiDonato, C.S.
SANTO C. DIDONATO, SUPERVISING FIELD REPRESENTATIVE
DATE: FEB 10, 2009 SERIAL NO.: 934

SHEET 74

SHEET 26