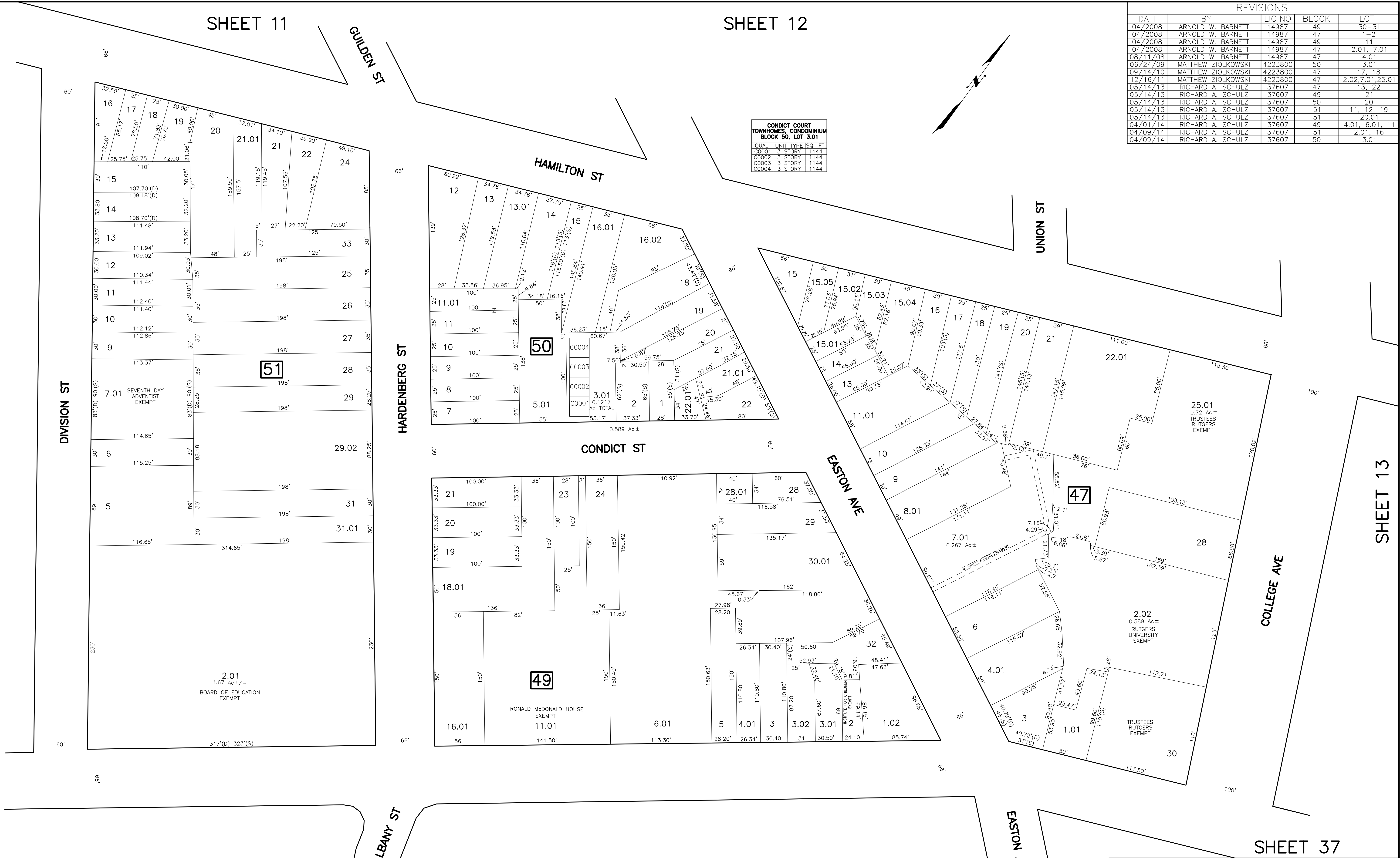


SHEET 11

SHEET 12

REVISIONS				
DATE	BY	LIC. NO.	BLOCK	LOT
04/2008	ARNOLD W. BARNETT	14987	49	30-31
04/2008	ARNOLD W. BARNETT	14987	47	1-2
04/2008	ARNOLD W. BARNETT	14987	49	11
04/2008	ARNOLD W. BARNETT	14987	47	2.01, 7.01
08/11/08	ARNOLD W. BARNETT	14987	47	4.01
06/24/09	MATTHEW ZIOLKOWSKI	4223800	50	3.01
09/14/10	MATTHEW ZIOLKOWSKI	4223800	47	17, 18
12/16/11	MATTHEW ZIOLKOWSKI	4223800	47	2.02, 7.01, 25.01
05/14/13	RICHARD A. SCHULZ	37607	47	13, 22
05/14/13	RICHARD A. SCHULZ	37607	49	21
05/14/13	RICHARD A. SCHULZ	37607	50	20
05/14/13	RICHARD A. SCHULZ	37607	51	11, 12, 19
05/14/13	RICHARD A. SCHULZ	37607	51	20.01
04/01/14	RICHARD A. SCHULZ	37607	49	4.01, 6.01, 11
04/09/14	RICHARD A. SCHULZ	37607	51	2.01, 16
04/09/14	RICHARD A. SCHULZ	37607	50	3.01



CONDUCT COURT TOWNHOMES, CONDOMINIUM BLOCK 50, LOT 3.01

QUAL.	UNIT	TYPE	SQ. FT.
C0001	3	STORY	1144
C0002	3	STORY	1144
C0003	3	STORY	1144
C0004	3	STORY	1144

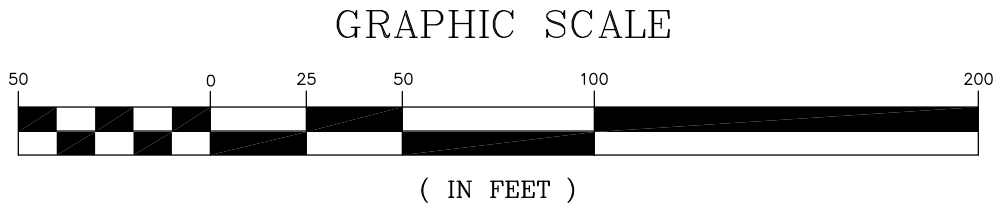
SHEET 17

SHEET 13

SHEET 21

SHEET 22

SHEET 37



NEW JERSEY DEPARTMENT OF THE TREASURY
DIVISION OF TAXATION
PROPERTY ADMINISTRATION
APPROVED AS A PLAN PURSUANT TO THE AUTHORITY OF N.J.A.C. 17:27 & 17:28
FOR THE DIRECTOR, DIVISION OF TAXATION
Thomas S. Kelly (S) C.T.A.
THOMAS S. KELLY, CHIEF, LOCAL PROPERTY FIELD ASSISTANCE
Santo C. DiDonato (S) C.T.A.
SANTO C. DIDONATO, SUPERVISING FIELD REPRESENTATIVE
DATE: FEB 10, 2009 SERIAL NO.: 934

TAX MAP
CITY OF NEW BRUNSWICK
MIDDLESEX COUNTY NEW JERSEY
SCALE: 1" = 50'
DATE: JUNE 2007
ARNOLD W. BARNETT
PROFESSIONAL ENGINEER AND LAND SURVEYOR
NEW JERSEY LICENSE NO. 14987
850 SO. WHITE HORSE PIKE
HAMMONTON, NEW JERSEY 08037
COA# 24GA27973300

* THIS SHEET HAS BEEN DRAWN USING COMPUTER AIDED DRAFTING/DESIGN (CAD/D) AND COORDINATE GEOMETRY (COGO).