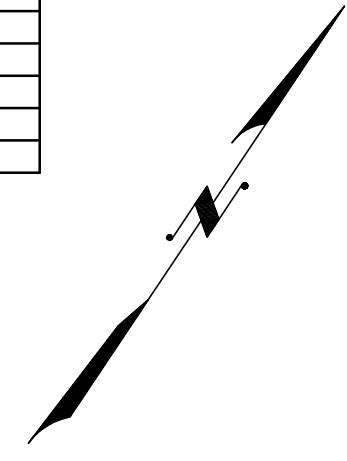


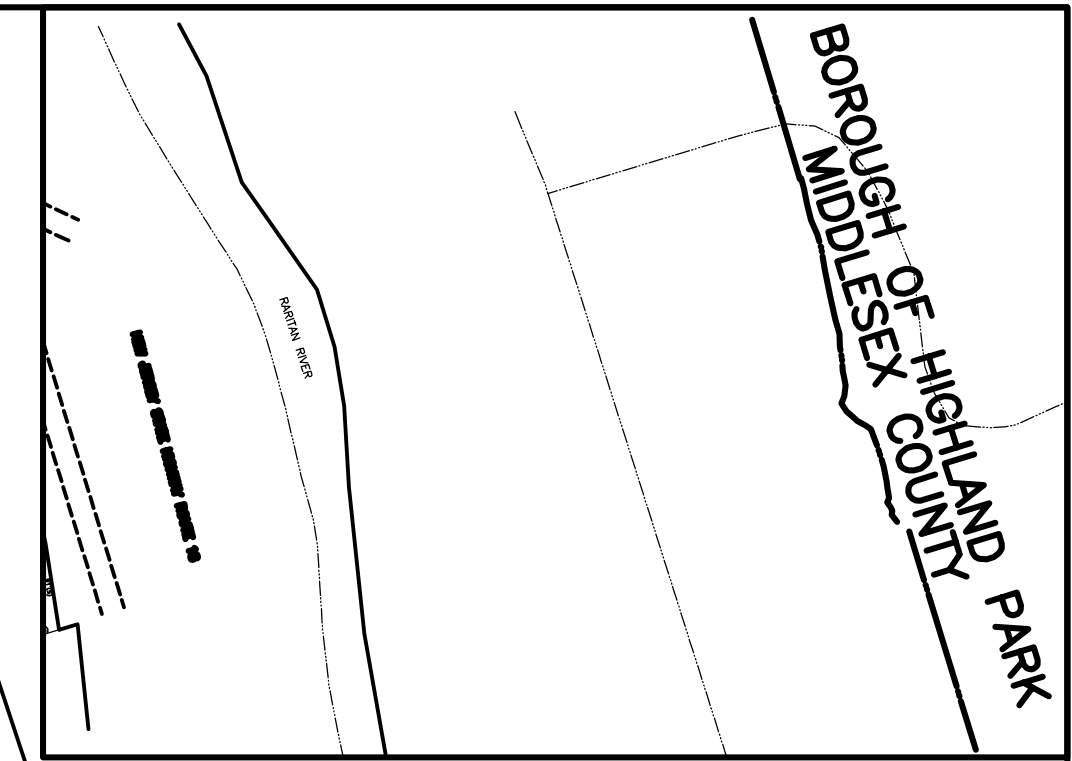
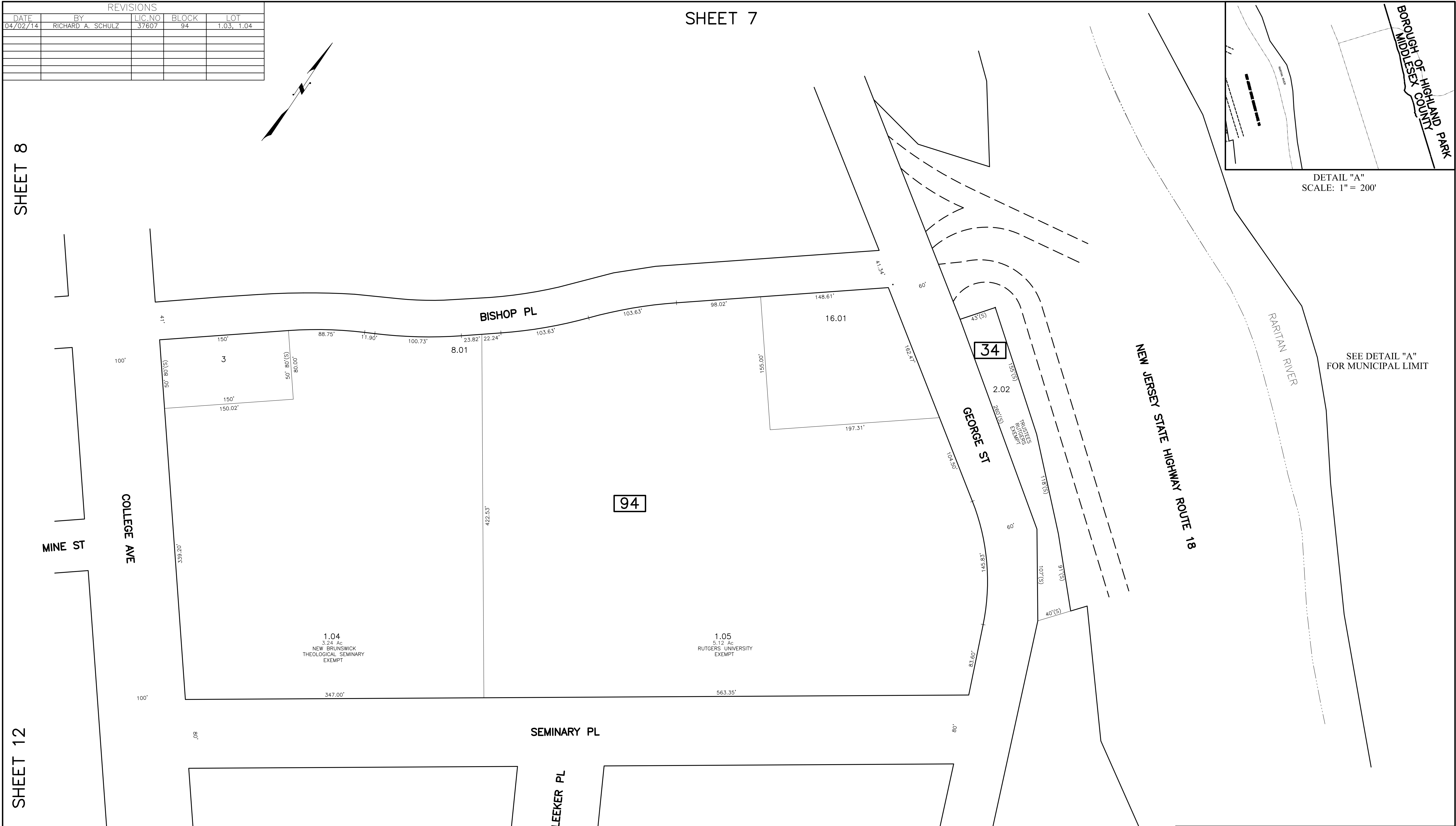
SHEET 7

REVISIONS				
DATE	BY	LIC. NO.	BLOCK	LOT
04/02/14	RICHARD A. SCHULZ	37607	94	1.03, 1.04



SHEET 8

SHEET 12



DETAIL "A"
SCALE: 1" = 200'

SEE DETAIL "A"
FOR MUNICIPAL LIMIT

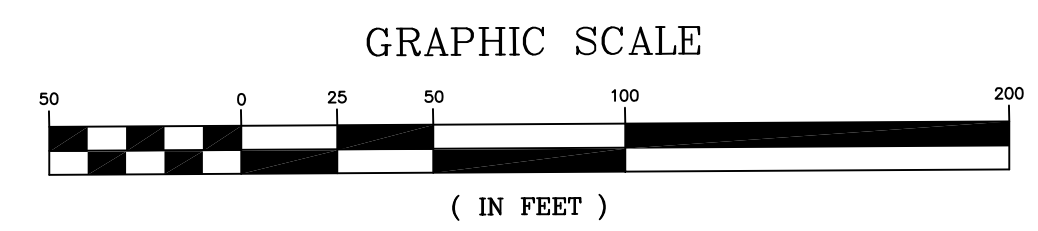
TAX MAP
CITY OF NEW BRUNSWICK

MIDDLESEX COUNTY
SCALE: 1" = 50'

NEW JERSEY
DATE: JUNE 2007

ARNOLD W. BARNETT
PROFESSIONAL ENGINEER AND LAND SURVEYOR
NEW JERSEY LICENSE NO. 14987

850 SO. WHITE HORSE PIKE
HAMMONTON, NEW JERSEY 08037
COA# 24GA27973300



* THIS SHEET HAS BEEN DRAWN USING COMPUTER AIDED DRAFTING/ DESIGN (CAD/D) AND COORDINATE GEOMETRY (COGO).

NEW JERSEY DEPARTMENT OF THE TREASURY
DIVISION OF TAXATION
PROPERTY ADMINISTRATION
APPROVED AS A MAP PURSUANT TO THE AUTHORITY OF
N.J.A.C. 17:27-15 & 17:27-16
FOR THE DIRECTOR DIVISION OF TAXATION

Thomas S. Barnett, P.E.
C.T.A.
THOMAS S. BARNETT, CHIEF, LOCAL PROPERTY FIELD ASSISTANCE
Santo C. DiDonato, SUPERVISING FIELD REPRESENTATIVE
DATE: FEB 10, 2009 SERIAL NO.: 934

SHEET 13

SHEET 14