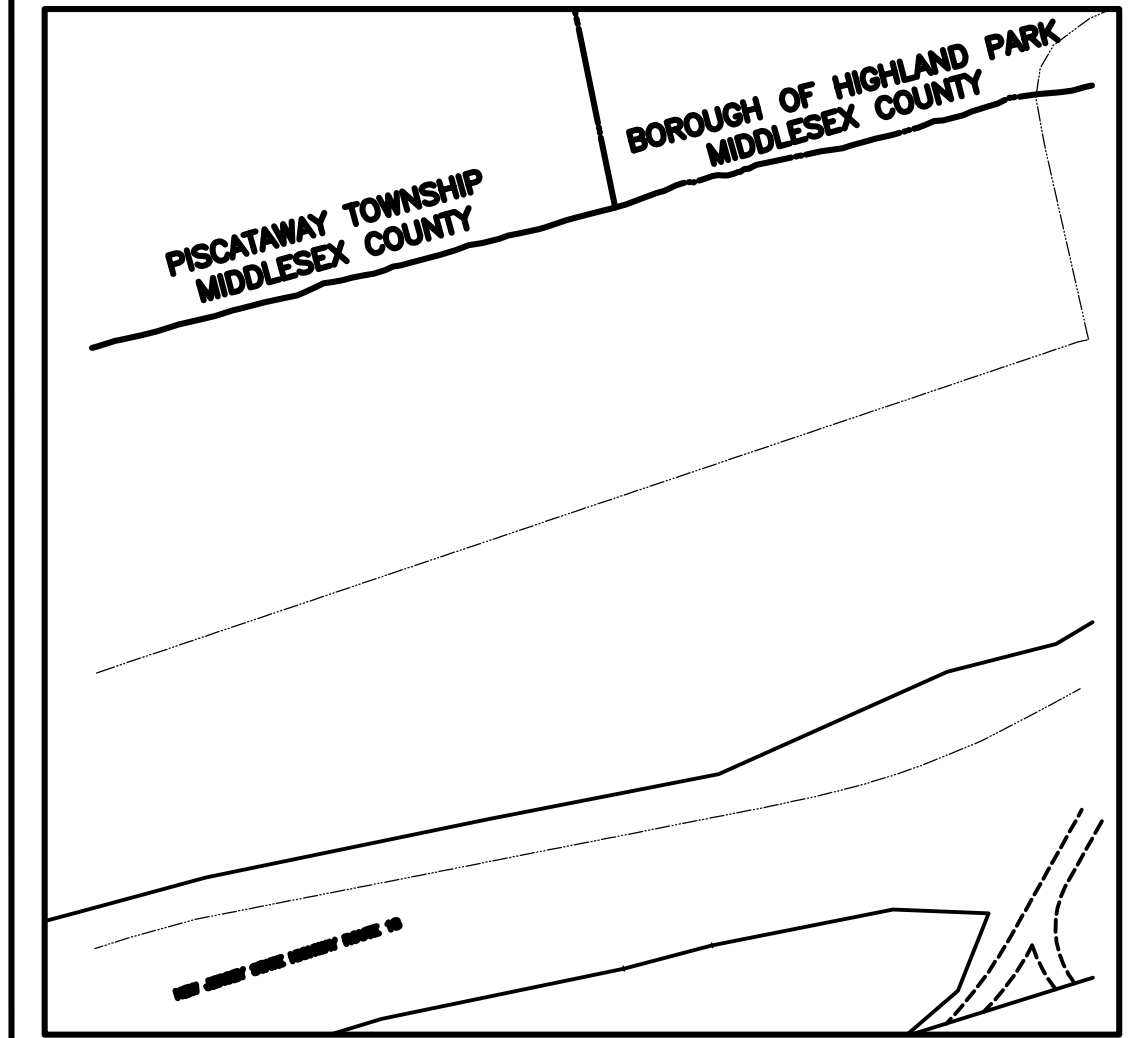
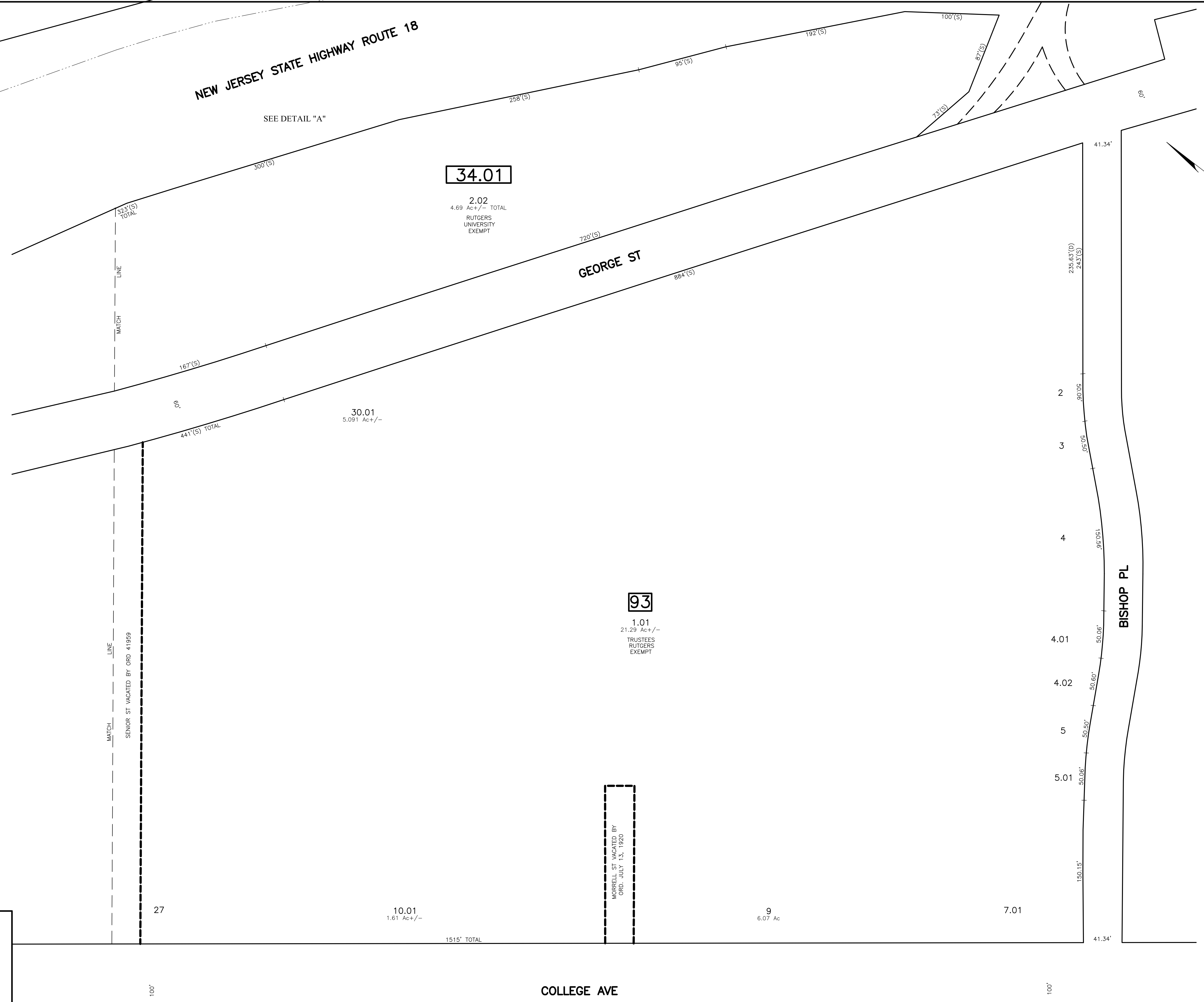


REVISIONS				
DATE	BY	LIC. NO.	BLOCK	LOT
04/2008	ARNOLD W. BARNETT	14987	93	1.01

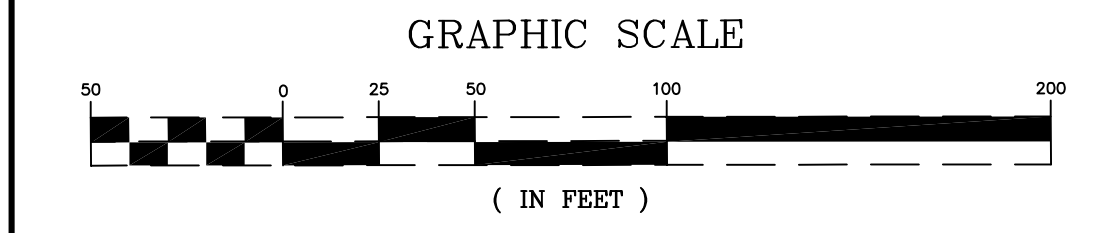


DETAIL "A"  
TO SHOW MUNICIPAL LIMIT  
SCALE: 1" = 200'



SHEET 4

SHEET 9



\* THIS SHEET HAS BEEN DRAWN USING COMPUTER AIDED DRAFTING/ DESIGN (CAD/D) AND COORDINATE GEOMETRY (COGO).

NEW JERSEY DEPARTMENT OF THE TREASURY  
DIVISION OF TAXATION  
PROPERTY ADMINISTRATION  
APPROVED AS A TAX MAP PURSUANT TO THE AUTHORITY OF  
P.L. 2008-15 & 2009-1  
FOR THE DIRECTOR, DIVISION OF TAXATION  
Thomas S. Bellini, C.T.A.  
THOMAS S. BELLINI, CHIEF, LOCAL PROPERTY FIELD ASSISTANCE  
Santo C. DiDona, C.T.A.  
SANTO C. DIDONA, SUPERVISING FIELD REPRESENTATIVE  
DATE: FEB 10, 2009 SERIAL NO.: 934

**TAX MAP**  
**CITY OF NEW BRUNSWICK**  
MIDDLESEX COUNTY NEW JERSEY  
SCALE: 1" = 50' DATE: JUNE 2007  
**ARNOLD W. BARNETT**  
PROFESSIONAL ENGINEER AND LAND SURVEYOR  
NEW JERSEY LICENSE NO. 14987  
850 SO. WHITE HORSE PIKE  
HAMMONTON, NEW JERSEY 08037  
COA# 24GA27973300

SENIOR ST SHEET 6

RAY ST

SHEET 8

MORRELL ST BARTLETT ST