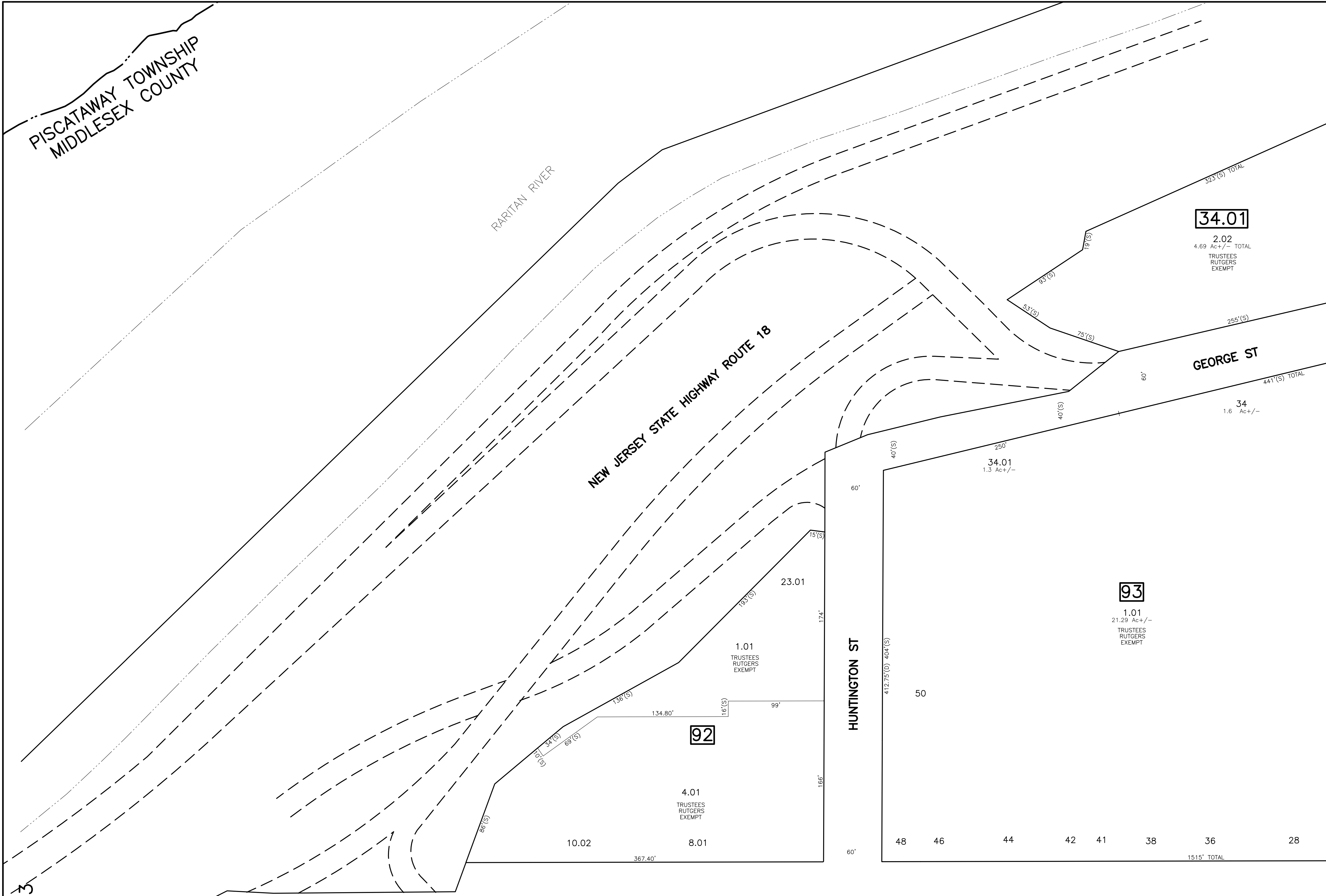
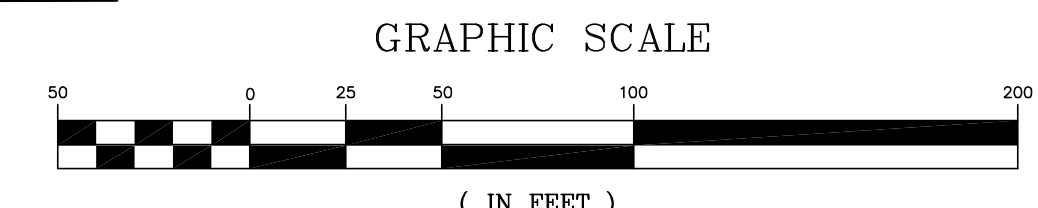


REVISIONS				
DATE	BY	LIC. NO.	BLOCK	LOT
04/2008	ARNOLD W. BARNETT	14987	93	1.01



SHEET 7

SHEET 73



SHEET 73

SHEET 73

LAFAYETTE ST

SHEET 3

COLLEGE AVE

HUNTINGTON ST

RICHARDSON ST

SHEET 6

NEW JERSEY DEPARTMENT OF THE TREASURY
DIVISION OF TAXATION
PROPERTY ADMINISTRATION
APPROVED AS A SEE MAP PURSUANT TO THE AUTHORITY OF
N.J.A.C. 17:27-15 & 17:27-16
FOR THE DIRECTOR, DIVISION OF TAXATION
Thomas S. Reilly (S)
THOMAS S. REILLY, CHIEF, LOCAL PROPERTY FIELD ASSISTANCE
Santo C. DiDonato (S)
SANTO C. DIDONATO, SUPERVISING FIELD REPRESENTATIVE
DATE: FEB 10, 2009 SERIAL NO.: 934

TAX MAP
CITY OF NEW BRUNSWICK
MIDDLESEX COUNTY NEW JERSEY
SCALE: 1" = 50' DATE: JUNE 2007
ARNOLD W. BARNETT
PROFESSIONAL ENGINEER AND LAND SURVEYOR
NEW JERSEY LICENSE NO. 14987
850 SO. WHITE HORSE PIKE
HAMMONTON, NEW JERSEY 08037
COA# 24GA27973300

* THIS SHEET HAS BEEN DRAWN USING COMPUTER AIDED DRAFTING/
DESIGN (CAD/D) AND COORDINATE GEOMETRY (COGO).