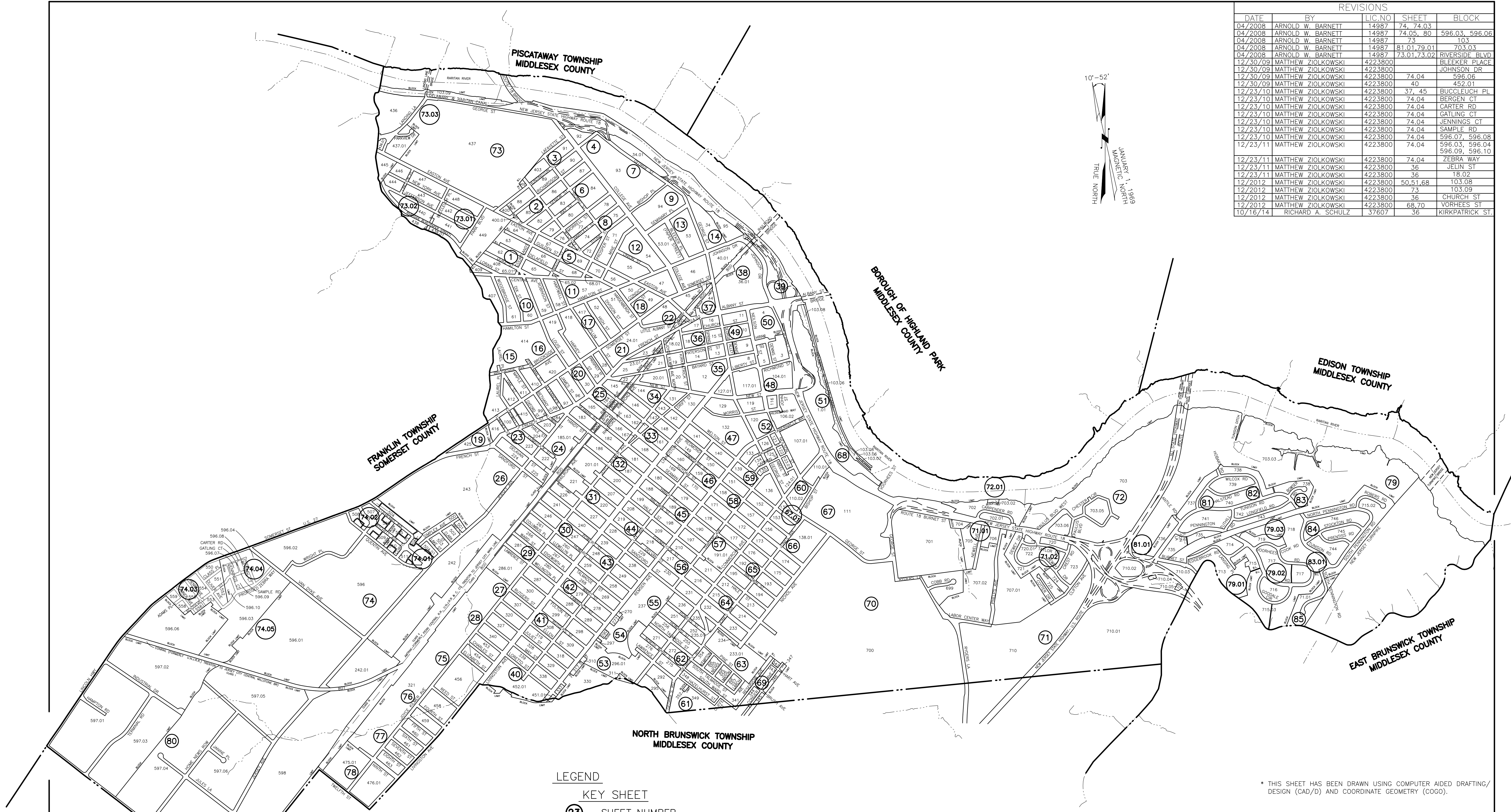
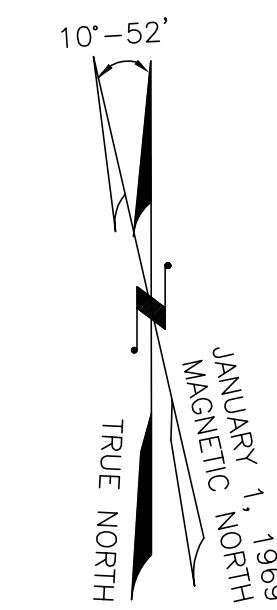


REVISIONS				
DATE	BY	LIC. NO.	SHEET	BLOCK
04/2008	ARNOLD W. BARNETT	14987	74, 74.03	596.03, 596.06
04/2008	ARNOLD W. BARNETT	14987	74.03, 80	703.03
04/2008	ARNOLD W. BARNETT	14987	73	103
04/2008	ARNOLD W. BARNETT	14987	81.01, 79.01	703.03
04/2008	ARNOLD W. BARNETT	14987	73.01, 73.02	RIVERSIDE BLVD
12/30/09	MATTHEW ZIOLKOWSKI	4223800		BLEEKER PLACE
12/30/09	MATTHEW ZIOLKOWSKI	4223800		JOHNSON DR
12/30/09	MATTHEW ZIOLKOWSKI	4223800	74.04	596.06
12/30/09	MATTHEW ZIOLKOWSKI	4223800	40	452.01
12/23/10	MATTHEW ZIOLKOWSKI	4223800	37, 45	BUCCLEUCH PL
12/23/10	MATTHEW ZIOLKOWSKI	4223800	74.04	BERGEN CT
12/23/10	MATTHEW ZIOLKOWSKI	4223800	74.04	CARTER RD
12/23/10	MATTHEW ZIOLKOWSKI	4223800	74.04	GATLING CT
12/23/10	MATTHEW ZIOLKOWSKI	4223800	74.04	JENNINGS CT
12/23/10	MATTHEW ZIOLKOWSKI	4223800	74.04	SAMPLE RD
12/23/10	MATTHEW ZIOLKOWSKI	4223800	74.04	596.07, 596.08
12/23/11	MATTHEW ZIOLKOWSKI	4223800	74.04	596.03, 596.04, 596.09, 596.10
12/23/11	MATTHEW ZIOLKOWSKI	4223800	74.04	ZEBRA WAY
12/23/11	MATTHEW ZIOLKOWSKI	4223800	36	JELIN ST
12/23/11	MATTHEW ZIOLKOWSKI	4223800	36	18.02
12/2012	MATTHEW ZIOLKOWSKI	4223800	50, 51, 68	103.08
12/2012	MATTHEW ZIOLKOWSKI	4223800	73	103.09
12/2012	MATTHEW ZIOLKOWSKI	4223800	36	CHURCH ST
12/2012	MATTHEW ZIOLKOWSKI	4223800	68, 70	VORHEES ST
10/16/14	RICHARD A. SCHULZ	37607	36	KIRKPATRICK ST.



LEGEND

KEY SHEET

- 23 SHEET NUMBER
- 234 BLOCK NUMBER
- SHEET LIMIT
- COUNTY BOUNDARY
- MUNICIPAL BOUNDARY
- RIGHT OF WAY/BLOCK LIMIT
- MATCH LINE
- ASSESSMENT LINE

EXEMPTED ABBREVIATIONS

BOARD OF EDUCATION	B.O.E.
EXEMPTED	EX
CHURCH	CHURCH
EXEMPTED	EX
CITY OF NEW BRUNSWICK	CITY
EXEMPTED	EX
MIDDLESEX AUTHORITY	COUNTY
EXEMPTED	EX
HOUSING AUTHORITY	H.A.
EXEMPTED	EX
STATE OF NEW JERSEY	STATE
EXEMPTED	EX

DETAIL SHEET

- 234 BLOCK NUMBER
- 23 LOT NUMBER

The areas, boundaries and dimensions, shown on this tax map, are derived from ground surveys, aerial surveys, and recorded plans, maps, deeds, wills and are to be used for assessment purposes only.

I HEREBY CERTIFY THAT THIS MAP HAS BEEN MADE UNDER MY IMMEDIATE SUPERVISION, AND COMPLIES WITH THE LAWS OF THE STATE OF NEW JERSEY.

Arnold W. Barnett, P.E. & L.S. December 17, 2008
 ARNOLD W. BARNETT, PROFESSIONAL ENGINEER LAND SURVEYOR
 N.J. LICENSE NO. 14987

NEW JERSEY DEPARTMENT OF THE TREASURY
 DIVISION OF TAXATION
 PROPERTY ADMINISTRATION
 APPROVED AS A KEY MAP PURSUANT TO THE AUTHORITY OF N.J.A.C. 17:27-18 & 16:27-1
 FOR THE DIRECTOR DIVISION OF TAXATION
Thomas S. Reilly, C.S.
 THOMAS S. REILLY, CHIEF, LOCAL PROPERTY FIELD ASSISTANCE
 Santo C. DiDonato, C.S.
 SANTO C. DIDONATO, SUPERVISING FIELD REPRESENTATIVE
 DATE: FEB 10, 2009 SERIAL NO.: 934

* THIS SHEET HAS BEEN DRAWN USING COMPUTER AIDED DRAFTING/DESIGN (CAD/D) AND COORDINATE GEOMETRY (COGO).
 TO SHOW CONDITIONS AS OF DECEMBER 2008

TAX MAP
CITY OF NEW BRUNSWICK
 MIDDLESEX COUNTY NEW JERSEY
 SCALE: 1" = 800' DATE: JUNE 2007

ARNOLD W. BARNETT
 PROFESSIONAL ENGINEER AND LAND SURVEYOR
 NEW JERSEY LICENSE NO. 14987

850 SO. WHITE HORSE PIKE
 HAMMONTON, NEW JERSEY 08037
 COA# 24GA27973300